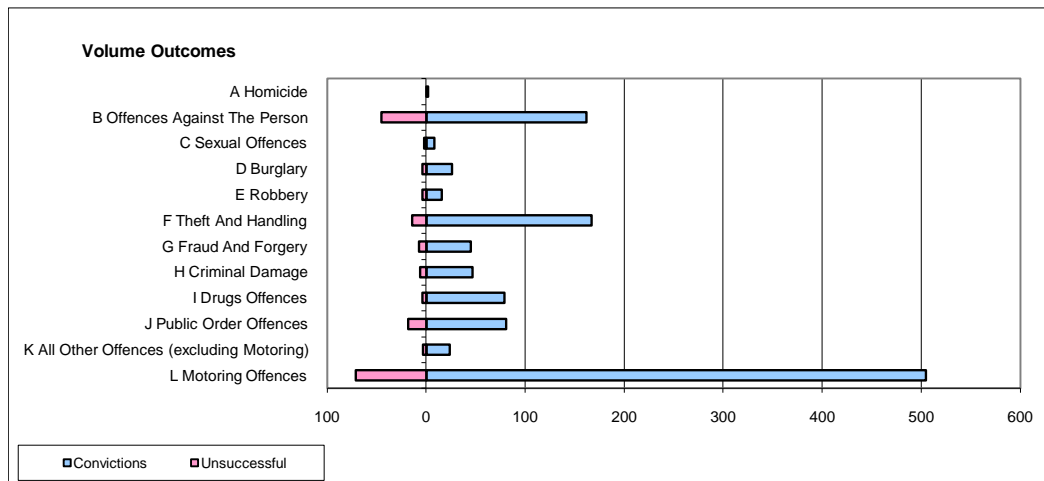
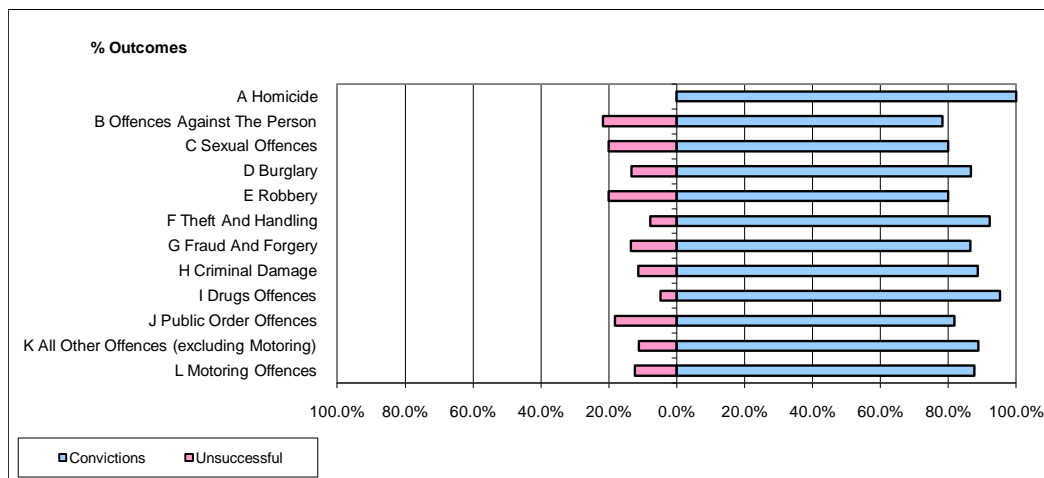


CPS OUTCOMES BY PRINCIPAL OFFENCE CATEGORY

January 2010

P18-Hertfordshire



	Convictions		Unsuccessful	
	Number of Defendants	%	Number of Defendants	%
A Homicide	2	100.0%	0	0.0%
B Offences Against The Person	162	78.3%	45	21.7%
C Sexual Offences	8	80.0%	2	20.0%
D Burglary	26	86.7%	4	13.3%
E Robbery	16	80.0%	4	20.0%
F Theft And Handling	167	92.3%	14	7.7%
G Fraud And Forgery	45	86.5%	7	13.5%
H Criminal Damage	47	88.7%	6	11.3%
I Drugs Offences	79	95.2%	4	4.8%
J Public Order Offences	81	81.8%	18	18.2%
K All Other Offences (excluding Motoring)	24	88.9%	3	11.1%
L Motoring Offences	505	87.7%	71	12.3%
Admin Finalisations	0	0.0%	13	100.0%
TOTAL	1,162	85.9%	191	14.1%