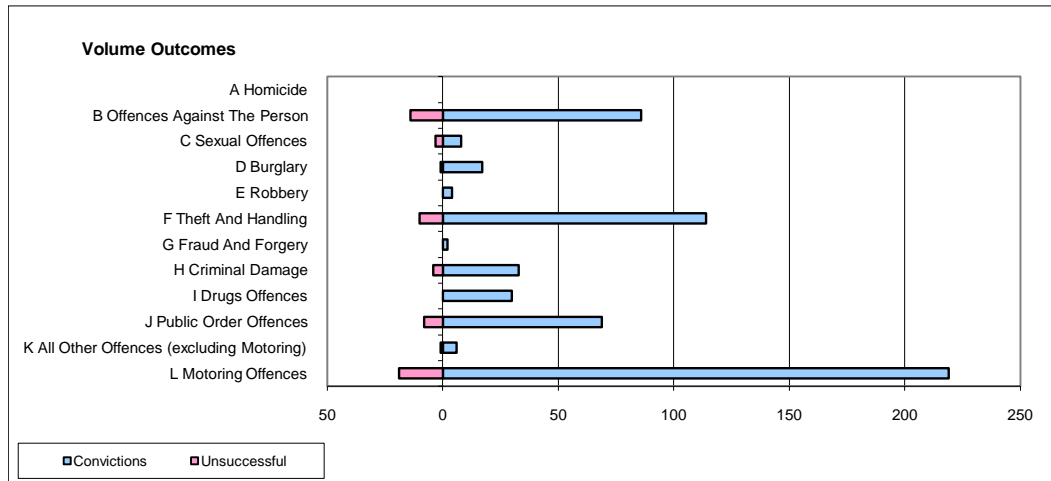
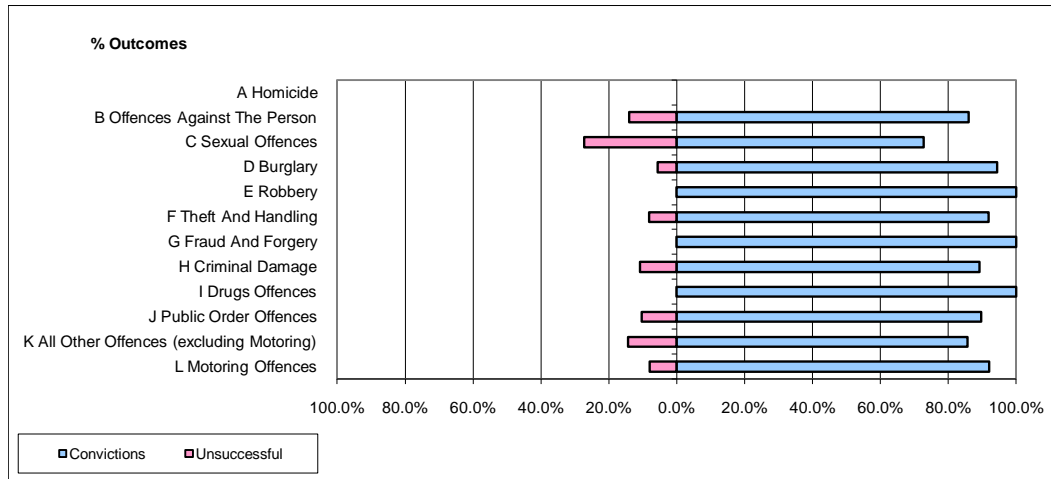


CPS OUTCOMES BY PRINCIPAL OFFENCE CATEGORY

January 2010

P16-Gwent



	Convictions		Unsuccessful	
	Number of Defendants	%	Number of Defendants	%
A Homicide	0	0	0	0
B Offences Against The Person	86	86.0%	14	14.0%
C Sexual Offences	8	72.7%	3	27.3%
D Burglary	17	94.4%	1	5.6%
E Robbery	4	100.0%	0	0.0%
F Theft And Handling	114	91.9%	10	8.1%
G Fraud And Forgery	2	100.0%	0	0.0%
H Criminal Damage	33	89.2%	4	10.8%
I Drugs Offences	30	100.0%	0	0.0%
J Public Order Offences	69	89.6%	8	10.4%
K All Other Offences (excluding Motoring)	6	85.7%	1	14.3%
L Motoring Offences	219	92.0%	19	8.0%
Admin Finalisations	0	0.0%	3	100.0%
TOTAL	588	90.3%	63	9.7%