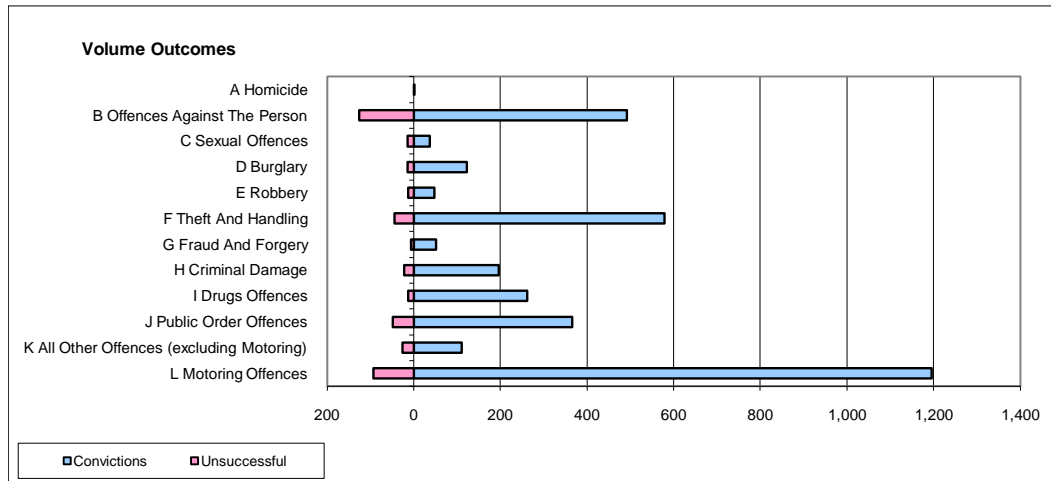
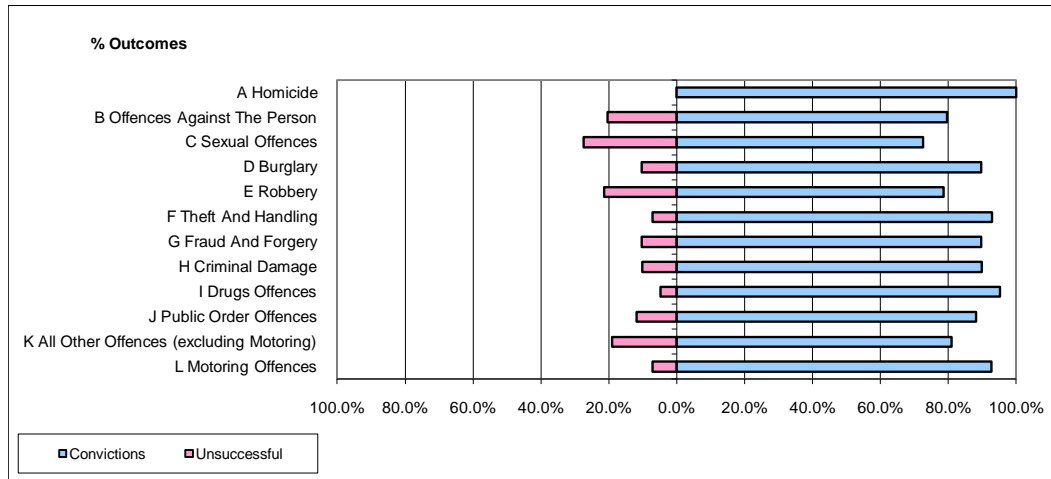


CPS OUTCOMES BY PRINCIPAL OFFENCE CATEGORY

January 2010

P15-GreaterManchester



	Convictions		Unsuccessful	
	Number of Defendants	%	Number of Defendants	%
A Homicide	1	100.0%	0	0.0%
B Offences Against The Person	492	79.6%	126	20.4%
C Sexual Offences	37	72.5%	14	27.5%
D Burglary	122	89.7%	14	10.3%
E Robbery	48	78.7%	13	21.3%
F Theft And Handling	579	92.9%	44	7.1%
G Fraud And Forgery	52	89.7%	6	10.3%
H Criminal Damage	196	89.9%	22	10.1%
I Drugs Offences	262	95.3%	13	4.7%
J Public Order Offences	366	88.2%	49	11.8%
K All Other Offences (excluding Motoring)	110	80.9%	26	19.1%
L Motoring Offences	1,196	92.8%	93	7.2%
Admin Finalisations	0	0.0%	43	100.0%
TOTAL	3,461	88.2%	463	11.8%