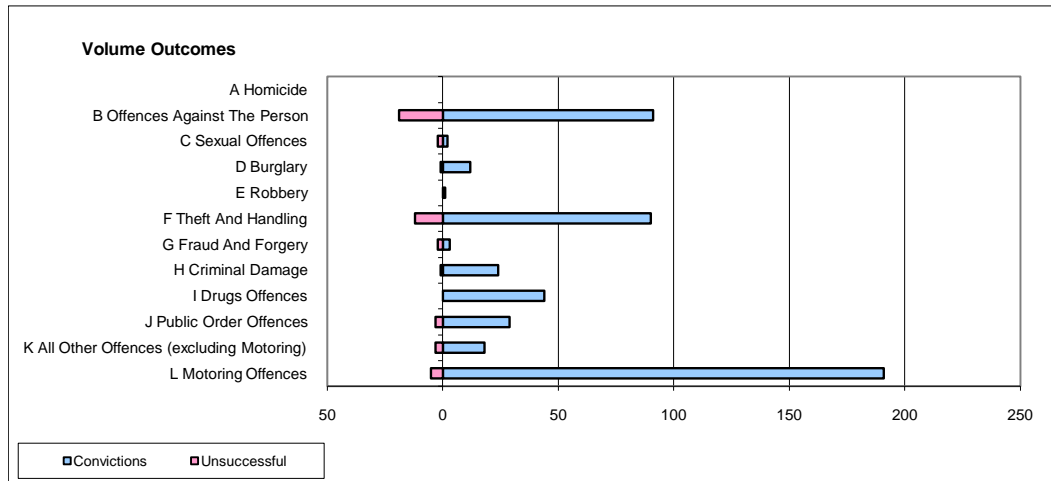
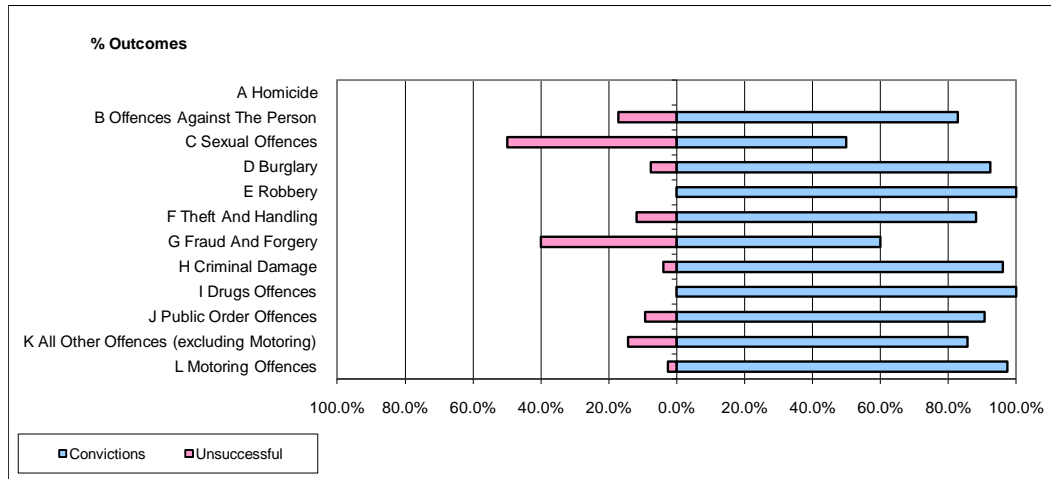


CPS OUTCOMES BY PRINCIPAL OFFENCE CATEGORY

January 2010

P14-Gloucestershire



	Convictions		Unsuccessful	
	Number of Defendants	%	Number of Defendants	%
A Homicide	0	0	0	0
B Offences Against The Person	91	82.7%	19	17.3%
C Sexual Offences	2	50.0%	2	50.0%
D Burglary	12	92.3%	1	7.7%
E Robbery	1	100.0%	0	0.0%
F Theft And Handling	90	88.2%	12	11.8%
G Fraud And Forgery	3	60.0%	2	40.0%
H Criminal Damage	24	96.0%	1	4.0%
I Drugs Offences	44	100.0%	0	0.0%
J Public Order Offences	29	90.6%	3	9.4%
K All Other Offences (excluding Motoring)	18	85.7%	3	14.3%
L Motoring Offences	191	97.4%	5	2.6%
Admin Finalisations	0	0.0%	8	100.0%
TOTAL	505	90.0%	56	10.0%