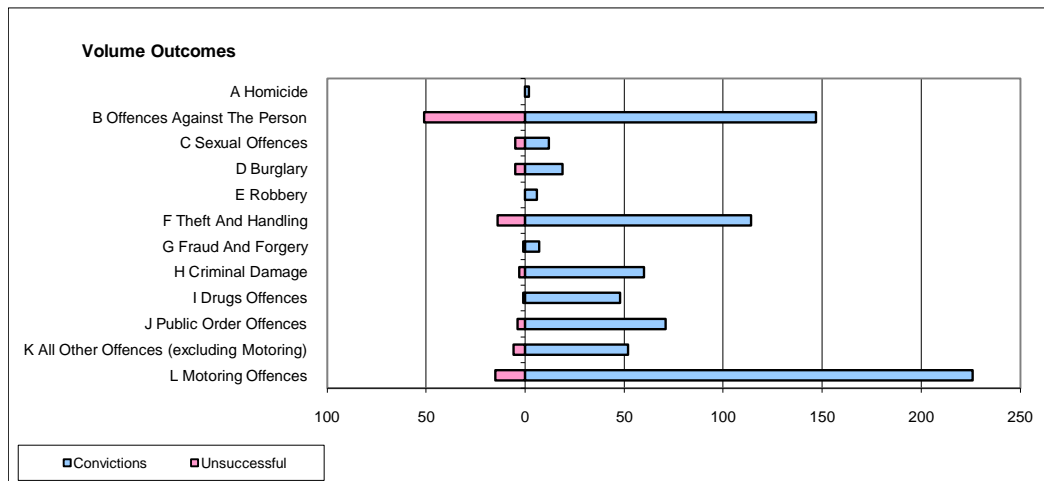
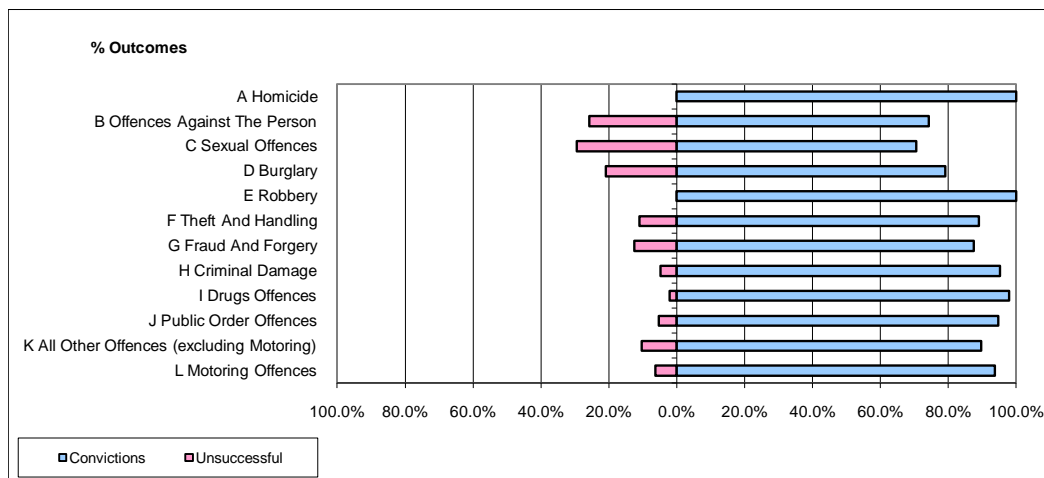


CPS OUTCOMES BY PRINCIPAL OFFENCE CATEGORY

January 2010

P08-Derbyshire



	Convictions		Unsuccessful	
	Number of Defendants	%	Number of Defendants	%
A Homicide	2	100.0%	0	0.0%
B Offences Against The Person	147	74.2%	51	25.8%
C Sexual Offences	12	70.6%	5	29.4%
D Burglary	19	79.2%	5	20.8%
E Robbery	6	100.0%	0	0.0%
F Theft And Handling	114	89.1%	14	10.9%
G Fraud And Forgery	7	87.5%	1	12.5%
H Criminal Damage	60	95.2%	3	4.8%
I Drugs Offences	48	98.0%	1	2.0%
J Public Order Offences	71	94.7%	4	5.3%
K All Other Offences (excluding Motoring)	52	89.7%	6	10.3%
L Motoring Offences	226	93.8%	15	6.2%
Admin Finalisations	0	0.0%	5	100.0%
TOTAL	764	87.4%	110	12.6%