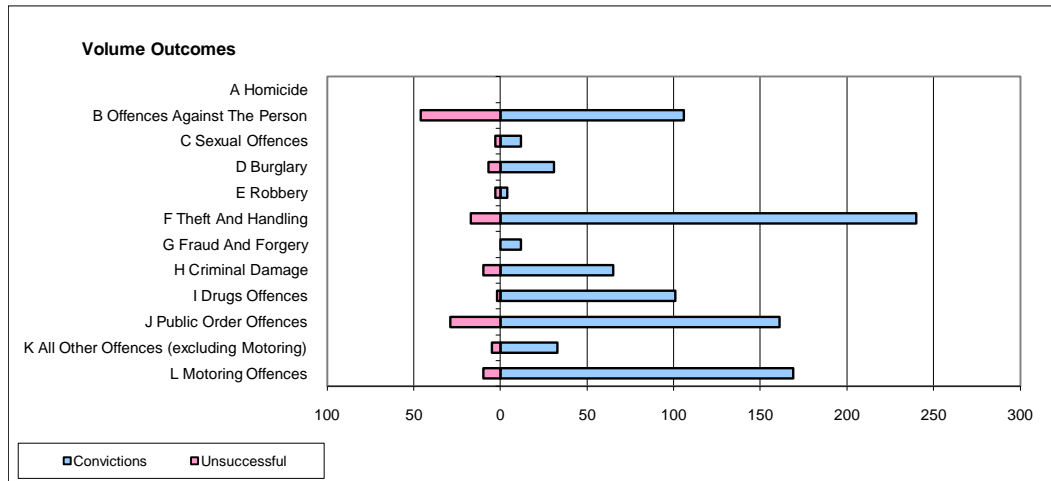
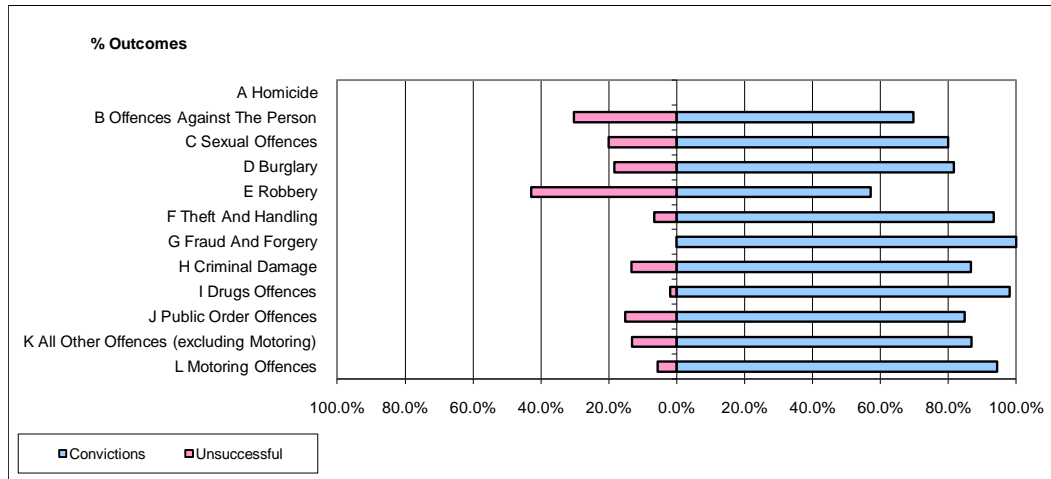


CPS OUTCOMES BY PRINCIPAL OFFENCE CATEGORY

January 2010

P06-Cleveland



	Convictions		Unsuccessful	
	Number of Defendants	%	Number of Defendants	%
A Homicide	0	0	0	0
B Offences Against The Person	106	69.7%	46	30.3%
C Sexual Offences	12	80.0%	3	20.0%
D Burglary	31	81.6%	7	18.4%
E Robbery	4	57.1%	3	42.9%
F Theft And Handling	240	93.4%	17	6.6%
G Fraud And Forgery	12	100.0%	0	0.0%
H Criminal Damage	65	86.7%	10	13.3%
I Drugs Offences	101	98.1%	2	1.9%
J Public Order Offences	161	84.7%	29	15.3%
K All Other Offences (excluding Motoring)	33	86.8%	5	13.2%
L Motoring Offences	169	94.4%	10	5.6%
Admin Finalisations	0	0.0%	8	100.0%
TOTAL	934	87.0%	140	13.0%