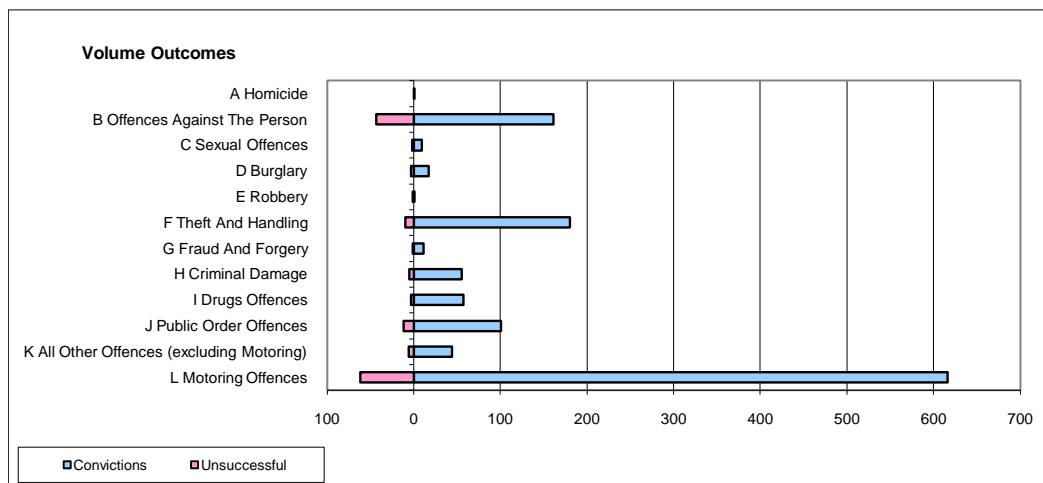
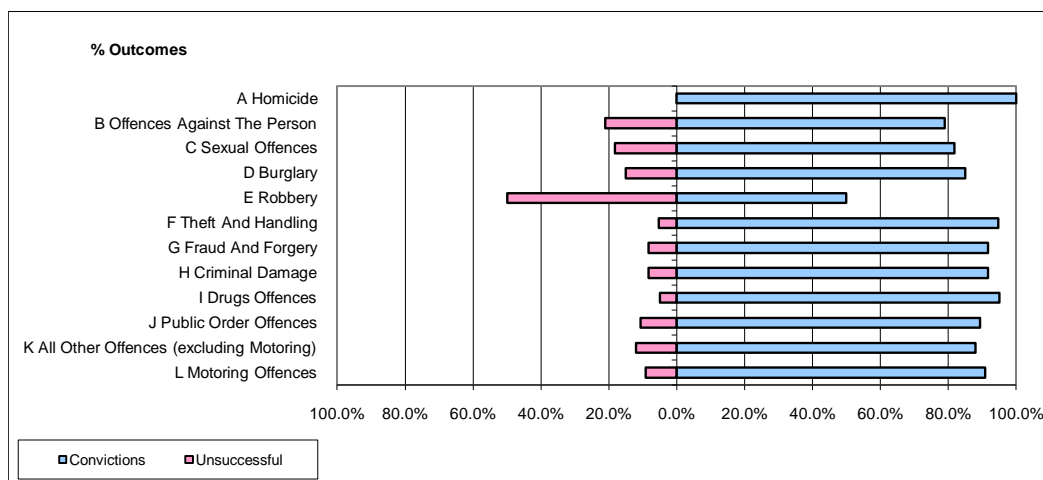


CPS OUTCOMES BY PRINCIPAL OFFENCE CATEGORY

January 2010

P04-Cheshire



	Convictions		Unsuccessful	
	Number of Defendants	%	Number of Defendants	%
A Homicide	1	100.0%	0	0.0%
B Offences Against The Person	161	78.9%	43	21.1%
C Sexual Offences	9	81.8%	2	18.2%
D Burglary	17	85.0%	3	15.0%
E Robbery	1	50.0%	1	50.0%
F Theft And Handling	180	94.7%	10	5.3%
G Fraud And Forgery	11	91.7%	1	8.3%
H Criminal Damage	55	91.7%	5	8.3%
I Drugs Offences	57	95.0%	3	5.0%
J Public Order Offences	101	89.4%	12	10.6%
K All Other Offences (excluding Motoring)	44	88.0%	6	12.0%
L Motoring Offences	616	90.9%	62	9.1%
Admin Finalisations	0	0.0%	4	100.0%
TOTAL	1,253	89.2%	152	10.8%