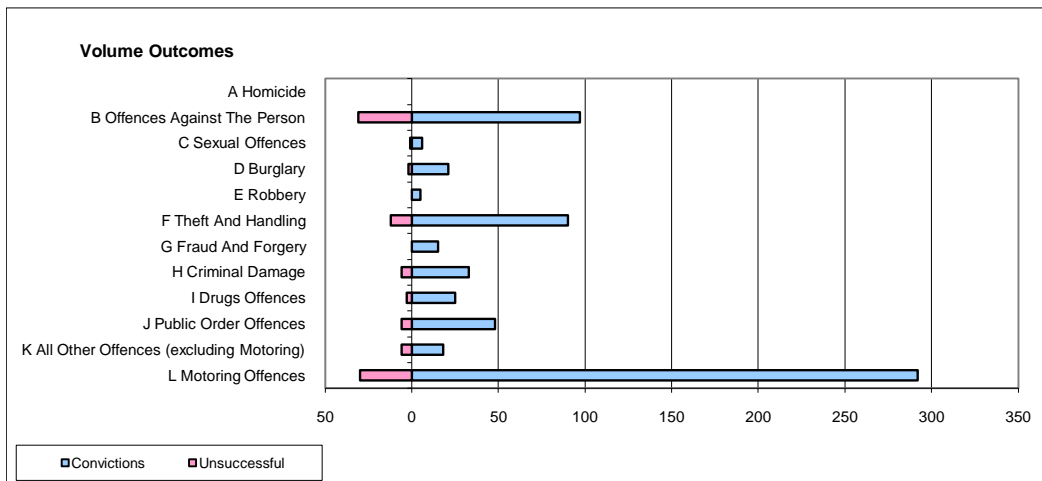
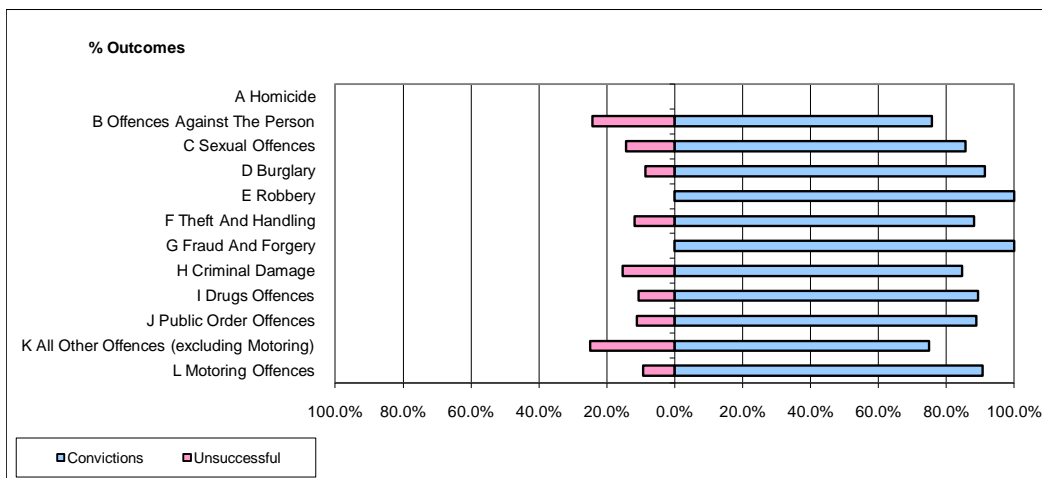


CPS OUTCOMES BY PRINCIPAL OFFENCE CATEGORY

January 2010

P02-Bedfordshire



| | Convictions | | Unsuccessful | |
|--|----------------------|---------------|----------------------|---------------|
| | Number of Defendants | % | Number of Defendants | % |
| A Homicide | 0 | 0 | 0 | 0 |
| B Offences Against The Person | 97 | 75.8% | 31 | 24.2% |
| C Sexual Offences | 6 | 85.7% | 1 | 14.3% |
| D Burglary | 21 | 91.3% | 2 | 8.7% |
| E Robbery | 5 | 100.0% | 0 | 0.0% |
| F Theft And Handling | 90 | 88.2% | 12 | 11.8% |
| G Fraud And Forgery | 15 | 100.0% | 0 | 0.0% |
| H Criminal Damage | 33 | 84.6% | 6 | 15.4% |
| I Drugs Offences | 25 | 89.3% | 3 | 10.7% |
| J Public Order Offences | 48 | 88.9% | 6 | 11.1% |
| K All Other Offences (excluding Motoring) | 18 | 75.0% | 6 | 25.0% |
| L Motoring Offences | 292 | 90.7% | 30 | 9.3% |
| Admin Finalisations | 0 | 0.0% | 13 | 100.0% |
| TOTAL | 650 | 85.5% | 110 | 14.5% |