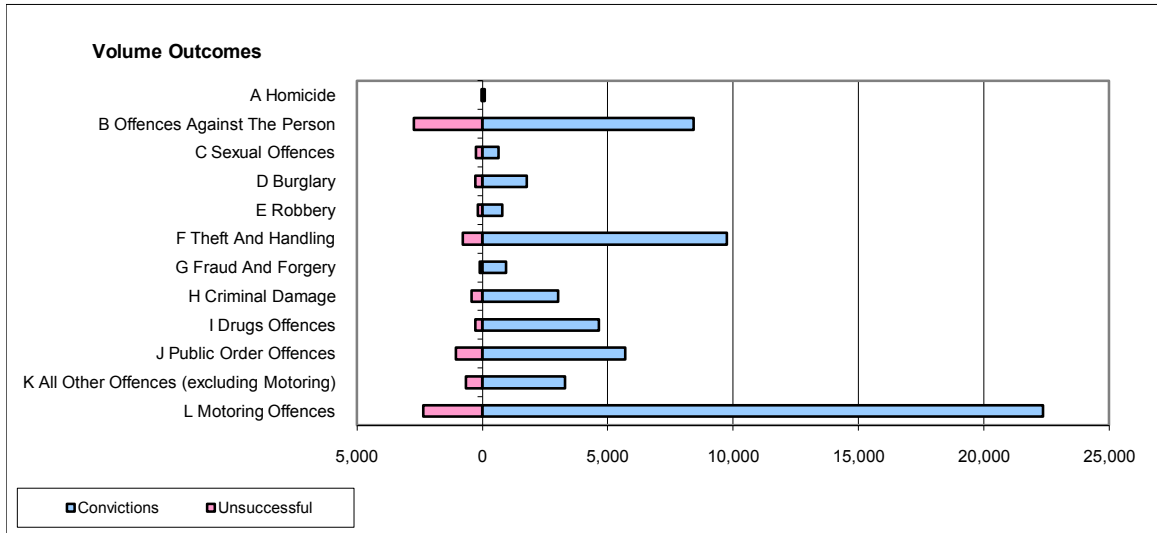
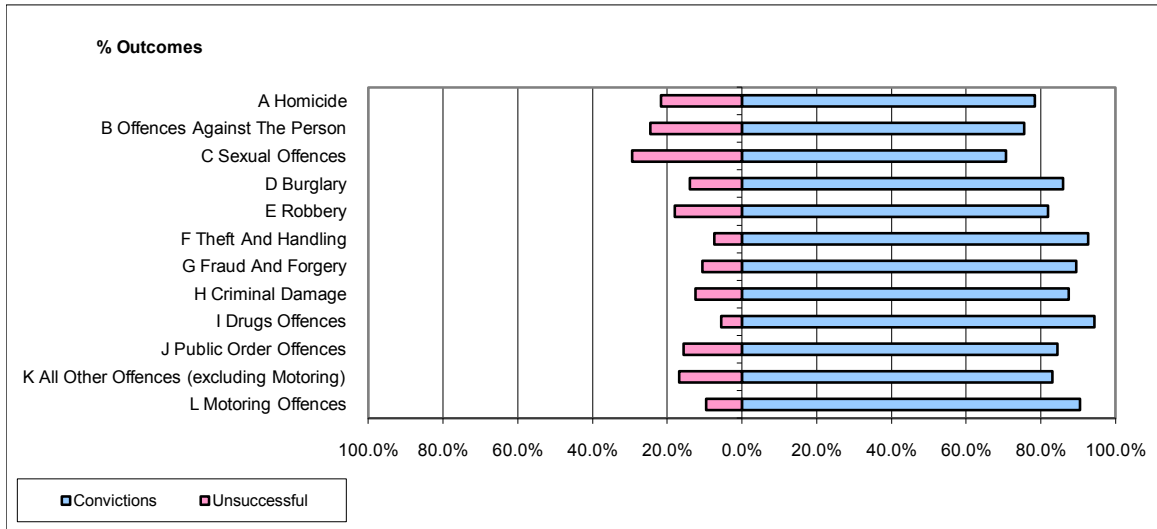


CPS OUTCOMES BY PRINCIPAL OFFENCE CATEGORY

December 2009

42 Areas



	Convictions		Unsuccessful	
	Number of Defendants	%	Number of Defendants	%
A Homicide	94	78.3%	26	21.7%
B Offences Against The Person	8,417	75.5%	2,729	24.5%
C Sexual Offences	651	70.6%	271	29.4%
D Burglary	1,756	86.0%	285	14.0%
E Robbery	789	82.0%	173	18.0%
F Theft And Handling	9,761	92.7%	774	7.3%
G Fraud And Forgery	941	89.4%	111	10.6%
H Criminal Damage	3,022	87.5%	431	12.5%
I Drugs Offences	4,649	94.4%	274	5.6%
J Public Order Offences	5,698	84.4%	1,055	15.6%
K All Other Offences (excluding Motoring)	3,291	83.2%	666	16.8%
L Motoring Offences	22,362	90.5%	2,349	9.5%
Admin Finalisations	0	0.0%	1,014	100.0%
TOTAL	61,431	85.8%	10,158	14.2%