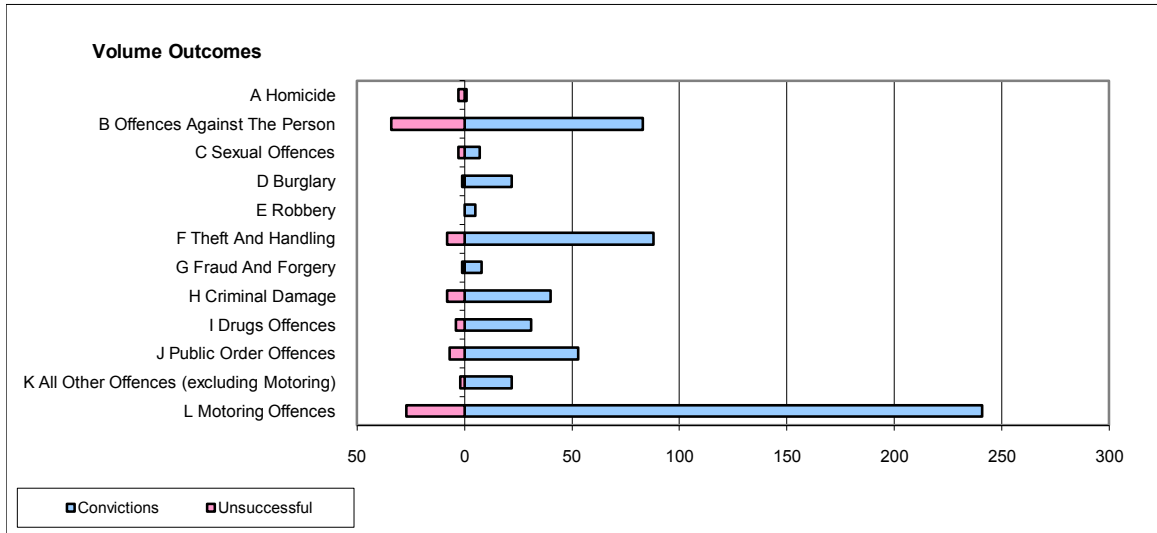
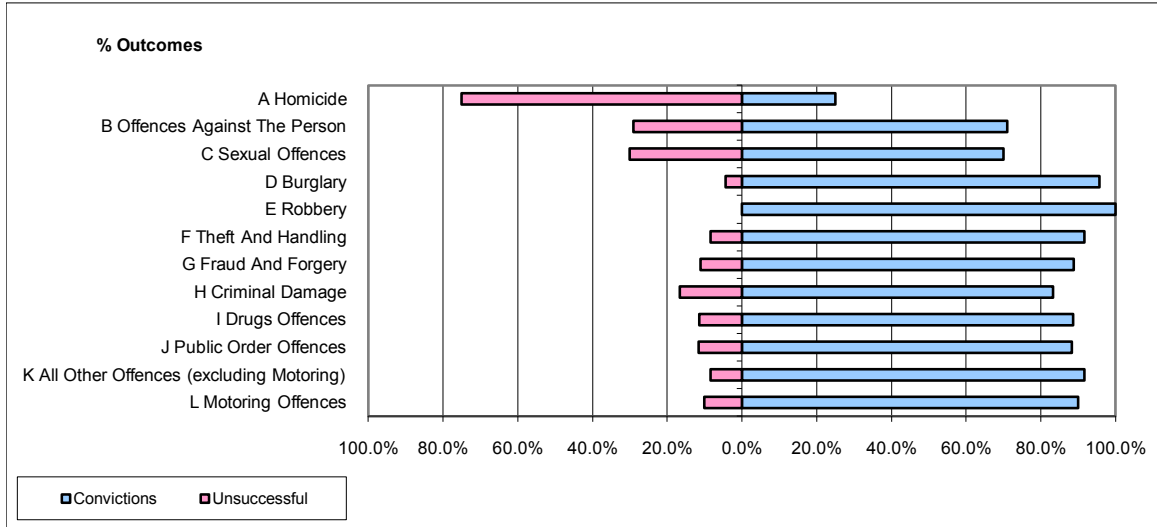


CPS OUTCOMES BY PRINCIPAL OFFENCE CATEGORY

December 2009

P43-Wiltshire



	Convictions		Unsuccessful	
	Number of Defendants	%	Number of Defendants	%
A Homicide	1	25.0%	3	75.0%
B Offences Against The Person	83	70.9%	34	29.1%
C Sexual Offences	7	70.0%	3	30.0%
D Burglary	22	95.7%	1	4.3%
E Robbery	5	100.0%	0	0.0%
F Theft And Handling	88	91.7%	8	8.3%
G Fraud And Forgery	8	88.9%	1	11.1%
H Criminal Damage	40	83.3%	8	16.7%
I Drugs Offences	31	88.6%	4	11.4%
J Public Order Offences	53	88.3%	7	11.7%
K All Other Offences (excluding Motoring)	22	91.7%	2	8.3%
L Motoring Offences	241	89.9%	27	10.1%
Admin Finalisations	0	0.0%	8	100.0%
TOTAL	601	85.0%	106	15.0%