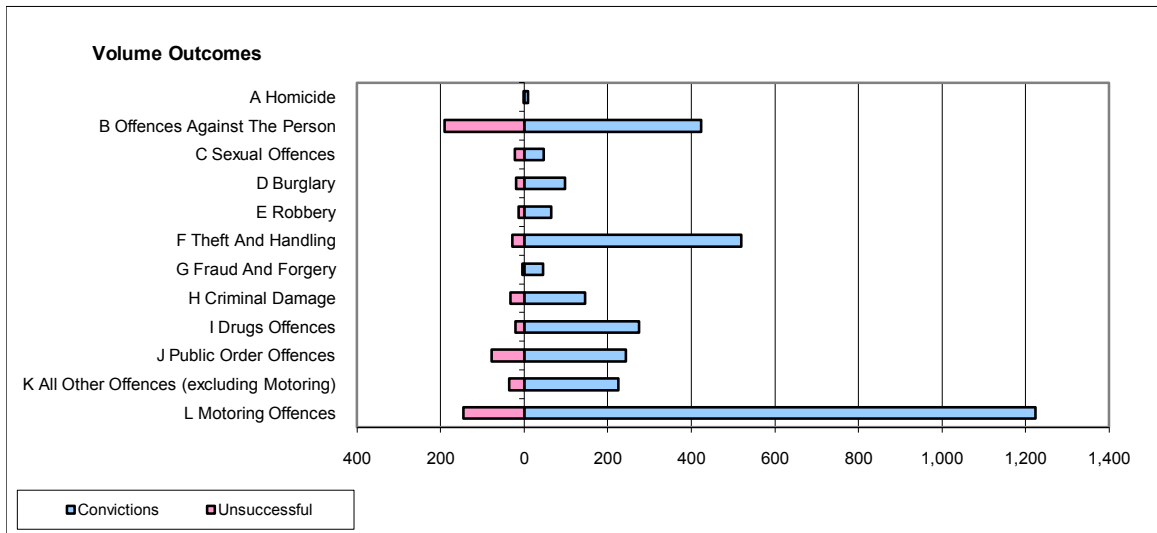
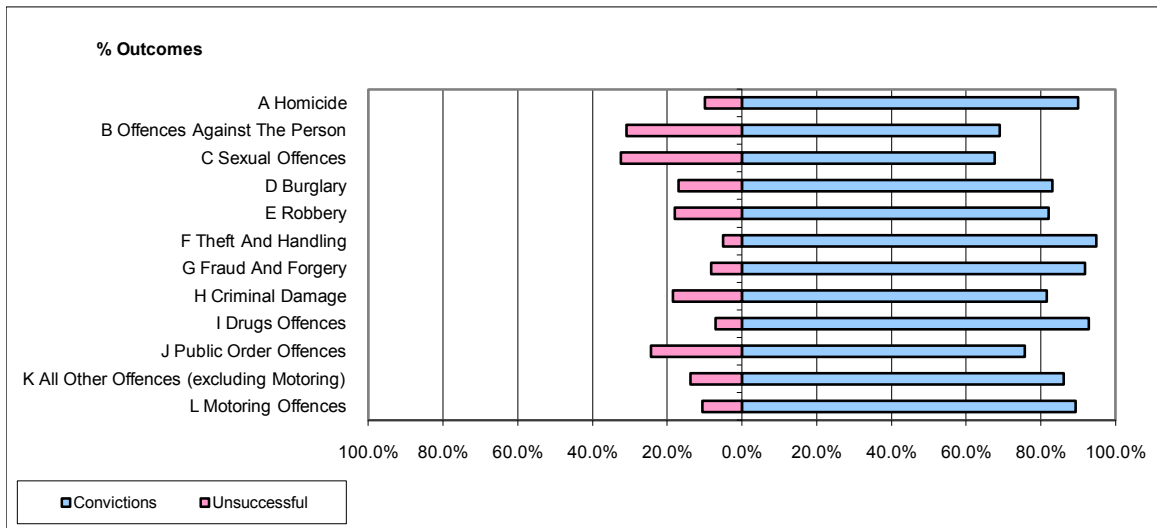


**CPS OUTCOMES BY PRINCIPAL OFFENCE CATEGORY**

**December 2009**

**P41-WestMidlands**



	Convictions		Unsuccessful	
	Number of Defendants	%	Number of Defendants	%
<b>A Homicide</b>	9	90.0%	1	10.0%
<b>B Offences Against The Person</b>	424	69.1%	190	30.9%
<b>C Sexual Offences</b>	46	67.6%	22	32.4%
<b>D Burglary</b>	98	83.1%	20	16.9%
<b>E Robbery</b>	64	82.1%	14	17.9%
<b>F Theft And Handling</b>	520	94.9%	28	5.1%
<b>G Fraud And Forgery</b>	45	91.8%	4	8.2%
<b>H Criminal Damage</b>	146	81.6%	33	18.4%
<b>I Drugs Offences</b>	275	92.9%	21	7.1%
<b>J Public Order Offences</b>	243	75.7%	78	24.3%
<b>K All Other Offences (excluding Motoring)</b>	225	86.2%	36	13.8%
<b>L Motoring Offences</b>	1,223	89.3%	146	10.7%
<b>Admin Finalisations</b>	0	0.0%	29	100.0%
<b>TOTAL</b>	<b>3,318</b>	<b>84.2%</b>	<b>622</b>	<b>15.8%</b>