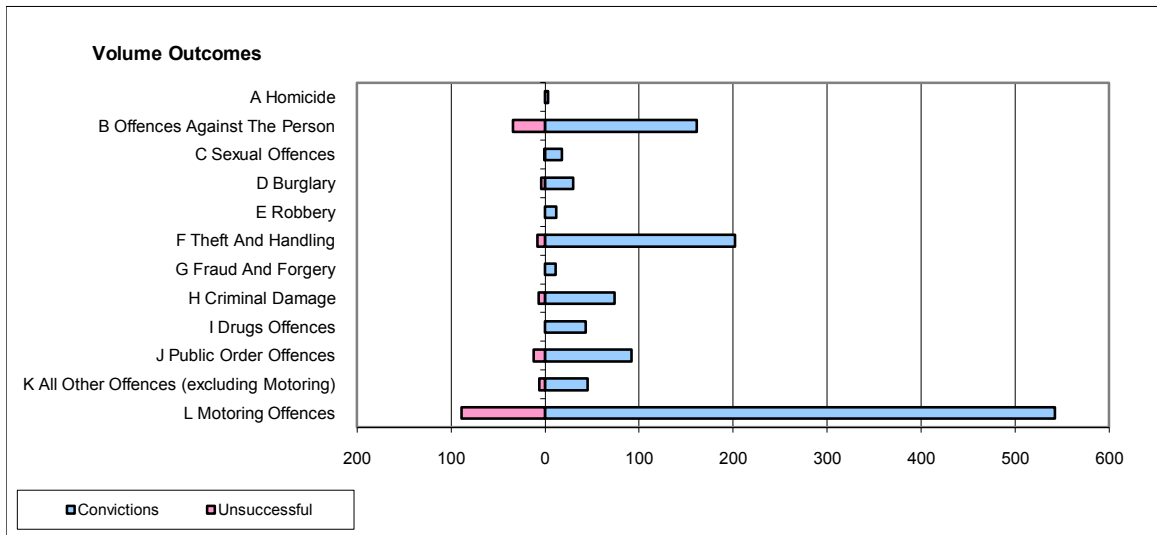
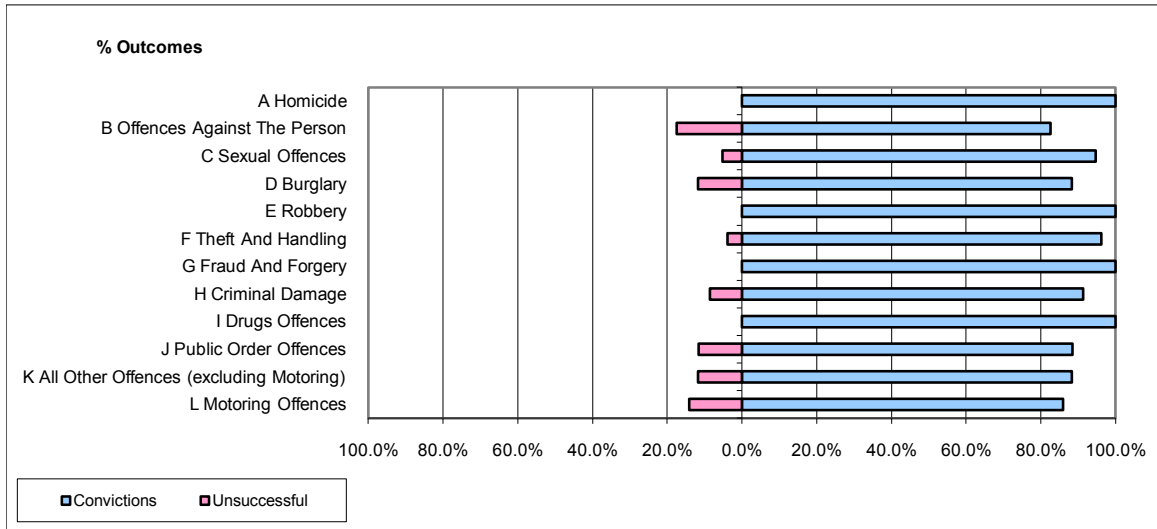


**CPS OUTCOMES BY PRINCIPAL OFFENCE CATEGORY**

**December 2009**

**P40-WestMercia**



	Convictions		Unsuccessful	
	Number of Defendants	%	Number of Defendants	%
<b>A Homicide</b>	3	100.0%	0	0.0%
<b>B Offences Against The Person</b>	161	82.6%	34	17.4%
<b>C Sexual Offences</b>	18	94.7%	1	5.3%
<b>D Burglary</b>	30	88.2%	4	11.8%
<b>E Robbery</b>	12	100.0%	0	0.0%
<b>F Theft And Handling</b>	202	96.2%	8	3.8%
<b>G Fraud And Forgery</b>	11	100.0%	0	0.0%
<b>H Criminal Damage</b>	74	91.4%	7	8.6%
<b>I Drugs Offences</b>	43	100.0%	0	0.0%
<b>J Public Order Offences</b>	92	88.5%	12	11.5%
<b>K All Other Offences (excluding Motoring)</b>	45	88.2%	6	11.8%
<b>L Motoring Offences</b>	542	85.9%	89	14.1%
<b>Admin Finalisations</b>	0	0.0%	8	100.0%
<b>TOTAL</b>	<b>1,233</b>	<b>87.9%</b>	<b>169</b>	<b>12.1%</b>