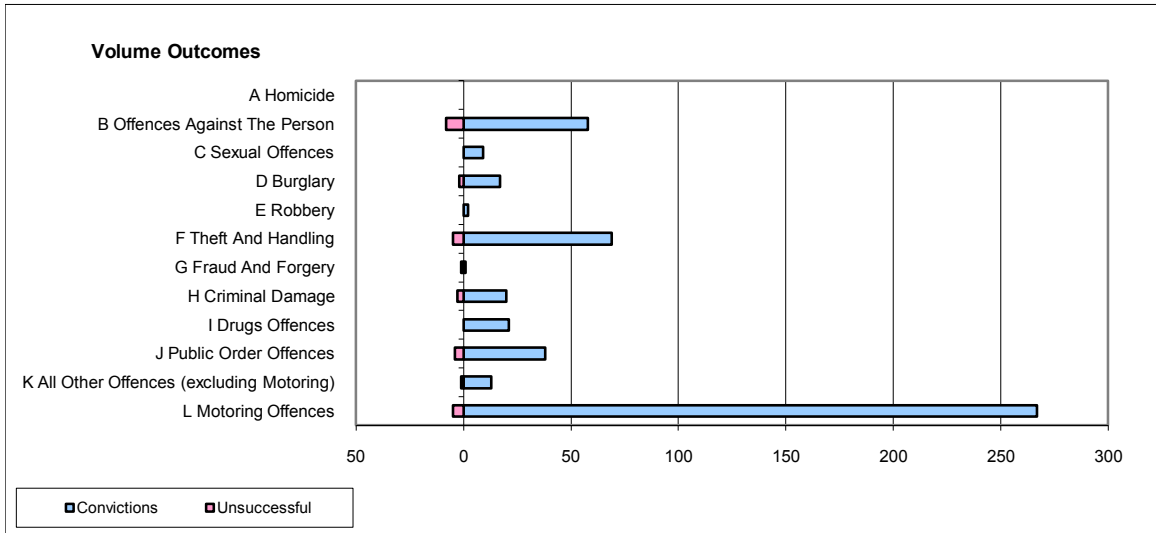
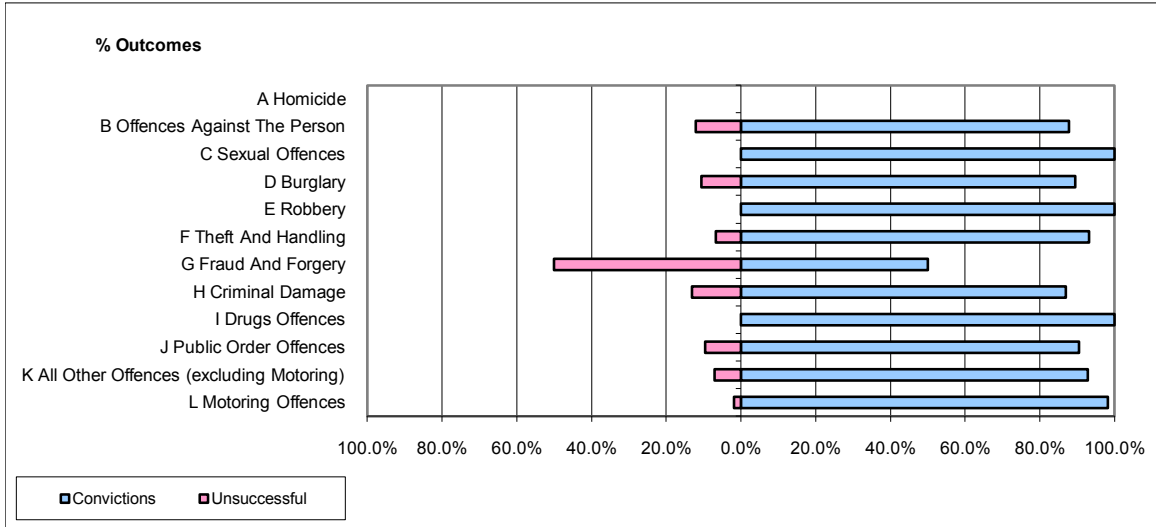


CPS OUTCOMES BY PRINCIPAL OFFENCE CATEGORY

December 2009

P39-Warwickshire



	Convictions		Unsuccessful	
	Number of Defendants	%	Number of Defendants	%
A Homicide	0	0	0	0
B Offences Against The Person	58	87.9%	8	12.1%
C Sexual Offences	9	100.0%	0	0.0%
D Burglary	17	89.5%	2	10.5%
E Robbery	2	100.0%	0	0.0%
F Theft And Handling	69	93.2%	5	6.8%
G Fraud And Forgery	1	50.0%	1	50.0%
H Criminal Damage	20	87.0%	3	13.0%
I Drugs Offences	21	100.0%	0	0.0%
J Public Order Offences	38	90.5%	4	9.5%
K All Other Offences (excluding Motoring)	13	92.9%	1	7.1%
L Motoring Offences	267	98.2%	5	1.8%
Admin Finalisations	0	0.0%	3	100.0%
TOTAL	515	94.1%	32	5.9%