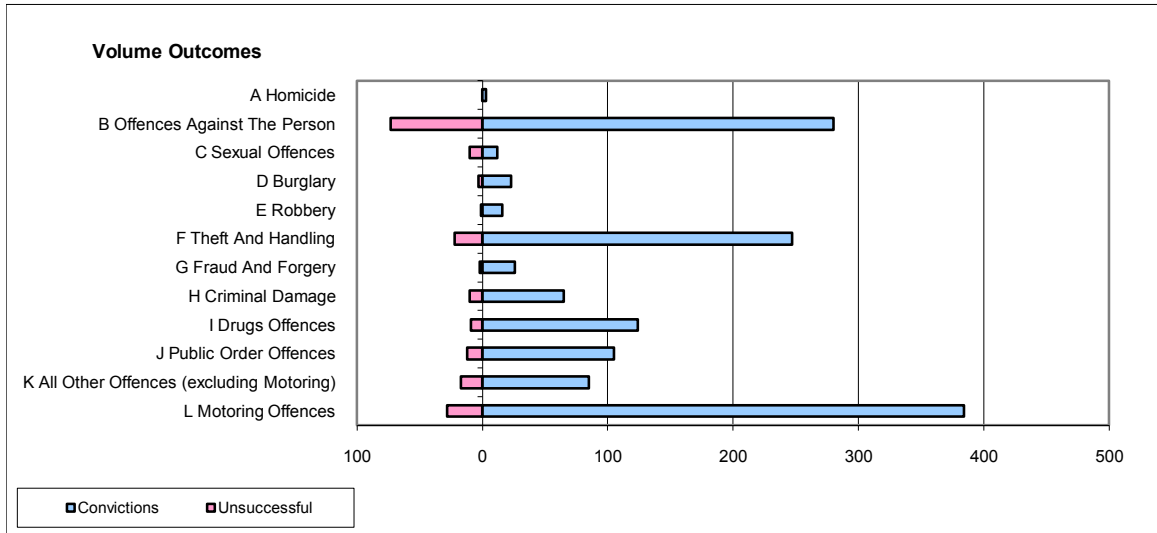
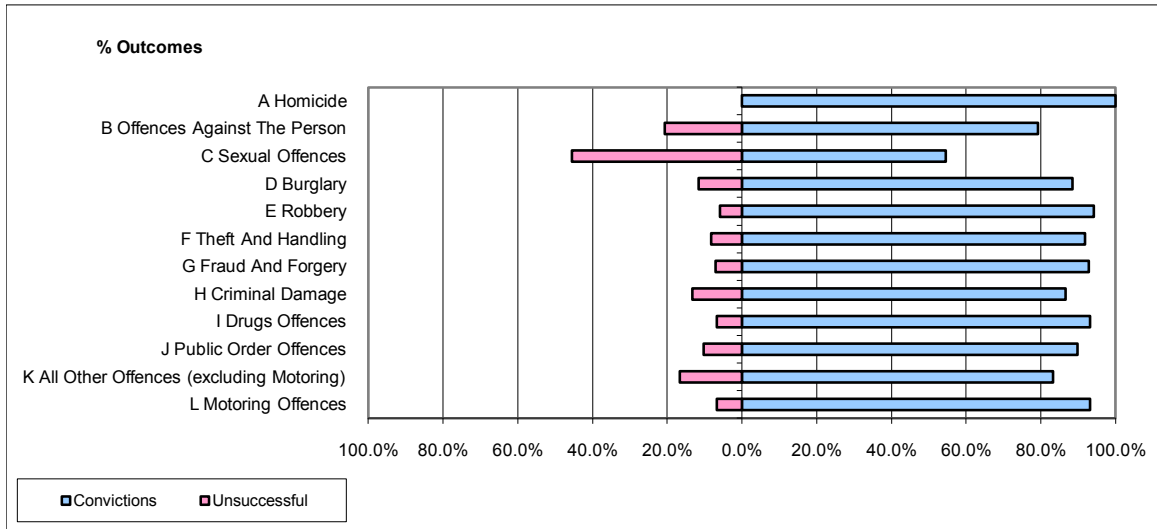


CPS OUTCOMES BY PRINCIPAL OFFENCE CATEGORY

December 2009

P37-Sussex



	Convictions		Unsuccessful	
	Number of Defendants	%	Number of Defendants	%
A Homicide	3	100.0%	0	0.0%
B Offences Against The Person	280	79.3%	73	20.7%
C Sexual Offences	12	54.5%	10	45.5%
D Burglary	23	88.5%	3	11.5%
E Robbery	16	94.1%	1	5.9%
F Theft And Handling	247	91.8%	22	8.2%
G Fraud And Forgery	26	92.9%	2	7.1%
H Criminal Damage	65	86.7%	10	13.3%
I Drugs Offences	124	93.2%	9	6.8%
J Public Order Offences	105	89.7%	12	10.3%
K All Other Offences (excluding Motoring)	85	83.3%	17	16.7%
L Motoring Offences	384	93.2%	28	6.8%
Admin Finalisations	0	0.0%	11	100.0%
TOTAL	1,370	87.4%	198	12.6%