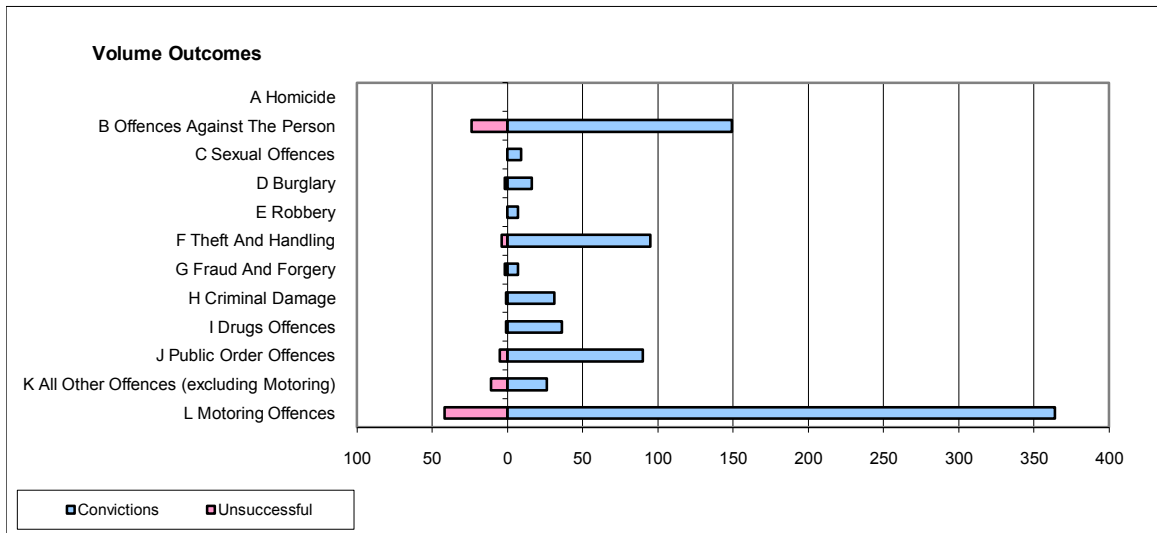
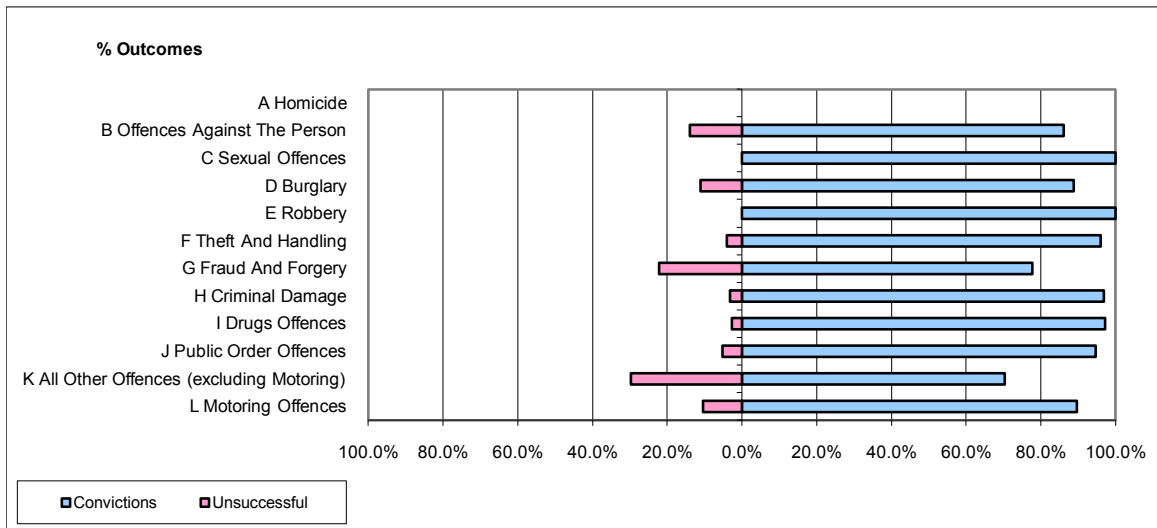


CPS OUTCOMES BY PRINCIPAL OFFENCE CATEGORY

December 2009

P35-Suffolk



	Convictions		Unsuccessful	
	Number of Defendants	%	Number of Defendants	%
A Homicide	0	0	0	0
B Offences Against The Person	149	86.1%	24	13.9%
C Sexual Offences	9	100.0%	0	0.0%
D Burglary	16	88.9%	2	11.1%
E Robbery	7	100.0%	0	0.0%
F Theft And Handling	95	96.0%	4	4.0%
G Fraud And Forgery	7	77.8%	2	22.2%
H Criminal Damage	31	96.9%	1	3.1%
I Drugs Offences	36	97.3%	1	2.7%
J Public Order Offences	90	94.7%	5	5.3%
K All Other Offences (excluding Motoring)	26	70.3%	11	29.7%
L Motoring Offences	364	89.7%	42	10.3%
Admin Finalisations	0	0.0%	12	100.0%
TOTAL	830	88.9%	104	11.1%