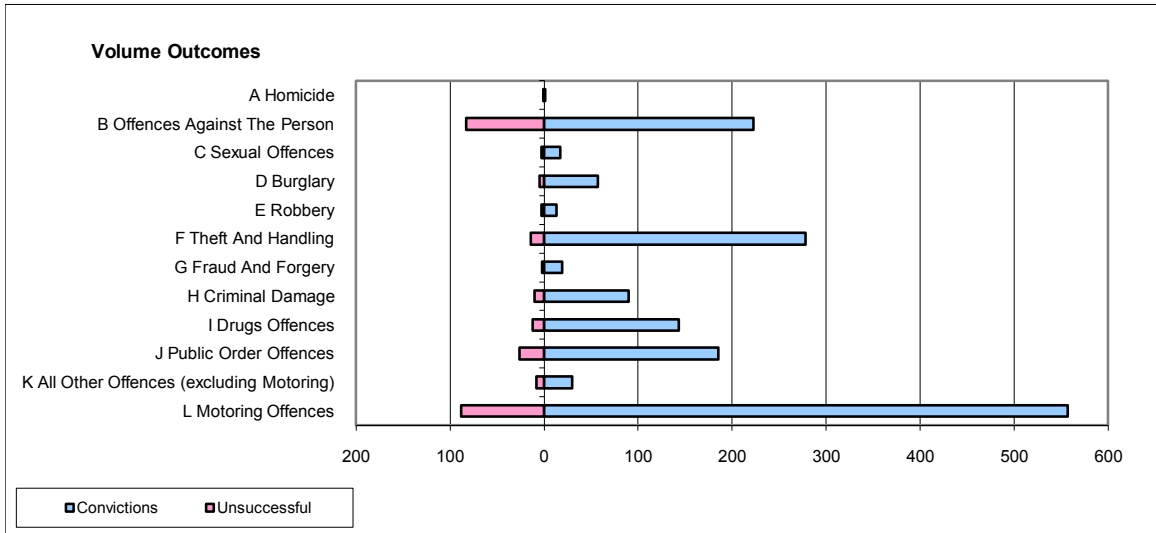
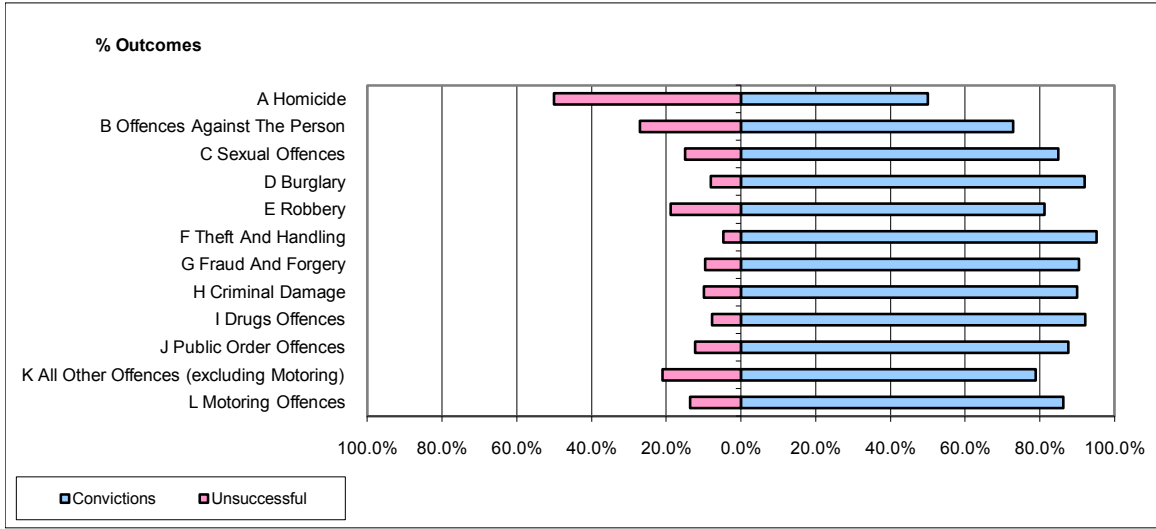


CPS OUTCOMES BY PRINCIPAL OFFENCE CATEGORY

December 2009

P32-SouthWales



	Convictions		Unsuccessful	
	Number of Defendants	%	Number of Defendants	%
A Homicide	1	50.0%	1	50.0%
B Offences Against The Person	223	72.9%	83	27.1%
C Sexual Offences	17	85.0%	3	15.0%
D Burglary	57	91.9%	5	8.1%
E Robbery	13	81.3%	3	18.8%
F Theft And Handling	278	95.2%	14	4.8%
G Fraud And Forgery	19	90.5%	2	9.5%
H Criminal Damage	90	90.0%	10	10.0%
I Drugs Offences	143	92.3%	12	7.7%
J Public Order Offences	185	87.7%	26	12.3%
K All Other Offences (excluding Motoring)	30	78.9%	8	21.1%
L Motoring Offences	557	86.4%	88	13.6%
Admin Finalisations	0	0.0%	30	100.0%
TOTAL	1,613	85.0%	285	15.0%