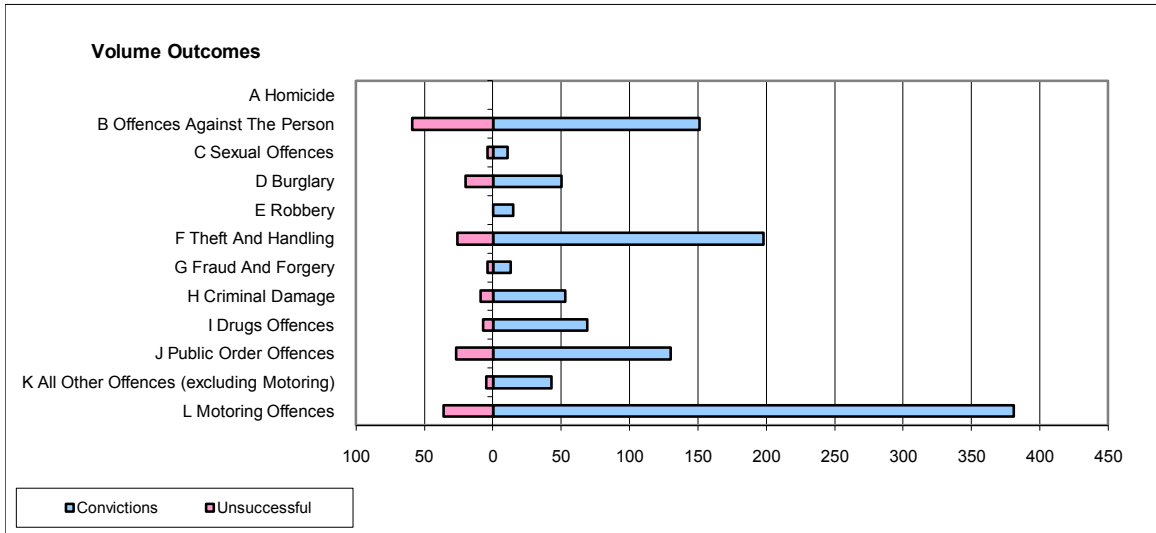
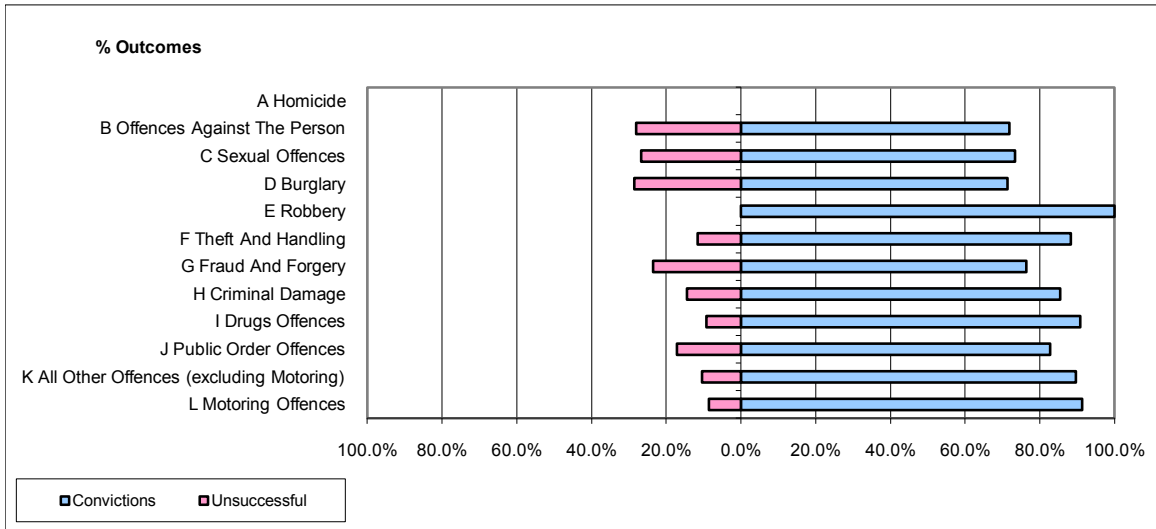


**CPS OUTCOMES BY PRINCIPAL OFFENCE CATEGORY**

**December 2009**

**P31-Nottinghamshire**



	Convictions		Unsuccessful	
	Number of Defendants	%	Number of Defendants	%
<b>A Homicide</b>	0	0	0	0
<b>B Offences Against The Person</b>	151	71.9%	59	28.1%
<b>C Sexual Offences</b>	11	73.3%	4	26.7%
<b>D Burglary</b>	50	71.4%	20	28.6%
<b>E Robbery</b>	15	100.0%	0	0.0%
<b>F Theft And Handling</b>	198	88.4%	26	11.6%
<b>G Fraud And Forgery</b>	13	76.5%	4	23.5%
<b>H Criminal Damage</b>	53	85.5%	9	14.5%
<b>I Drugs Offences</b>	69	90.8%	7	9.2%
<b>J Public Order Offences</b>	130	82.8%	27	17.2%
<b>K All Other Offences (excluding Motoring)</b>	43	89.6%	5	10.4%
<b>L Motoring Offences</b>	381	91.4%	36	8.6%
<b>Admin Finalisations</b>	0	0.0%	9	100.0%
<b>TOTAL</b>	<b>1,114</b>	<b>84.4%</b>	<b>206</b>	<b>15.6%</b>