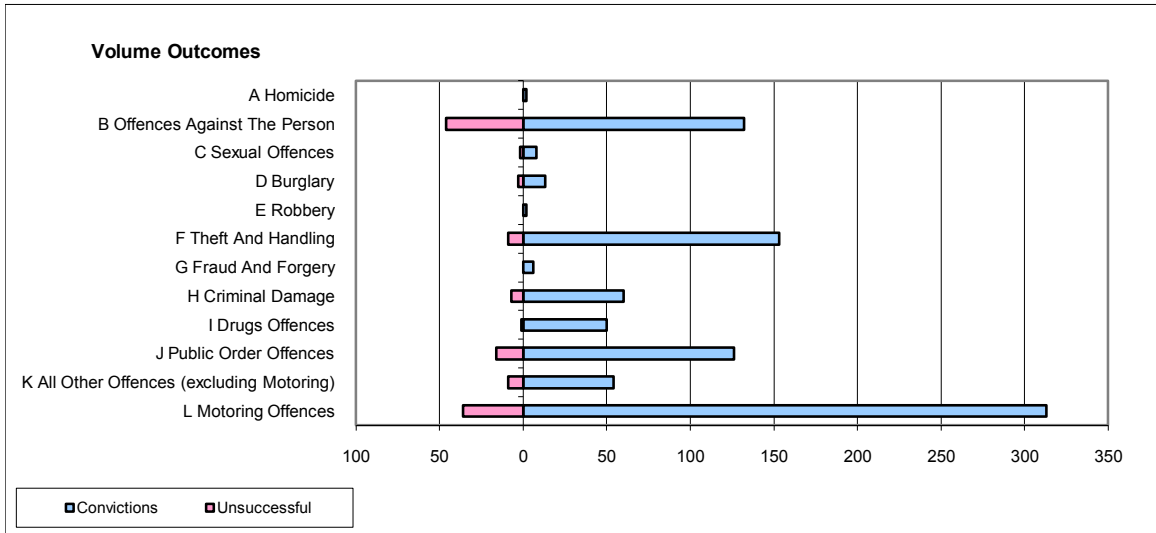
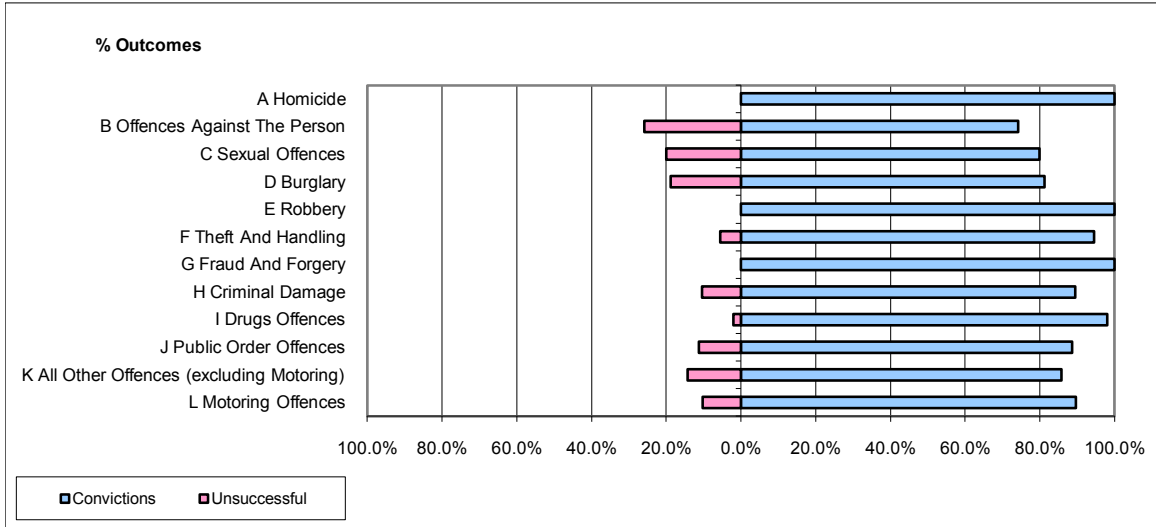


**CPS OUTCOMES BY PRINCIPAL OFFENCE CATEGORY**

**December 2009**

**P29-NorthWales**



	Convictions		Unsuccessful	
	Number of Defendants	%	Number of Defendants	%
<b>A Homicide</b>	2	100.0%	0	0.0%
<b>B Offences Against The Person</b>	132	74.2%	46	25.8%
<b>C Sexual Offences</b>	8	80.0%	2	20.0%
<b>D Burglary</b>	13	81.3%	3	18.8%
<b>E Robbery</b>	2	100.0%	0	0.0%
<b>F Theft And Handling</b>	153	94.4%	9	5.6%
<b>G Fraud And Forgery</b>	6	100.0%	0	0.0%
<b>H Criminal Damage</b>	60	89.6%	7	10.4%
<b>I Drugs Offences</b>	50	98.0%	1	2.0%
<b>J Public Order Offences</b>	126	88.7%	16	11.3%
<b>K All Other Offences (excluding Motoring)</b>	54	85.7%	9	14.3%
<b>L Motoring Offences</b>	313	89.7%	36	10.3%
<b>Admin Finalisations</b>	0	0.0%	9	100.0%
<b>TOTAL</b>	<b>919</b>	<b>86.9%</b>	<b>138</b>	<b>13.1%</b>