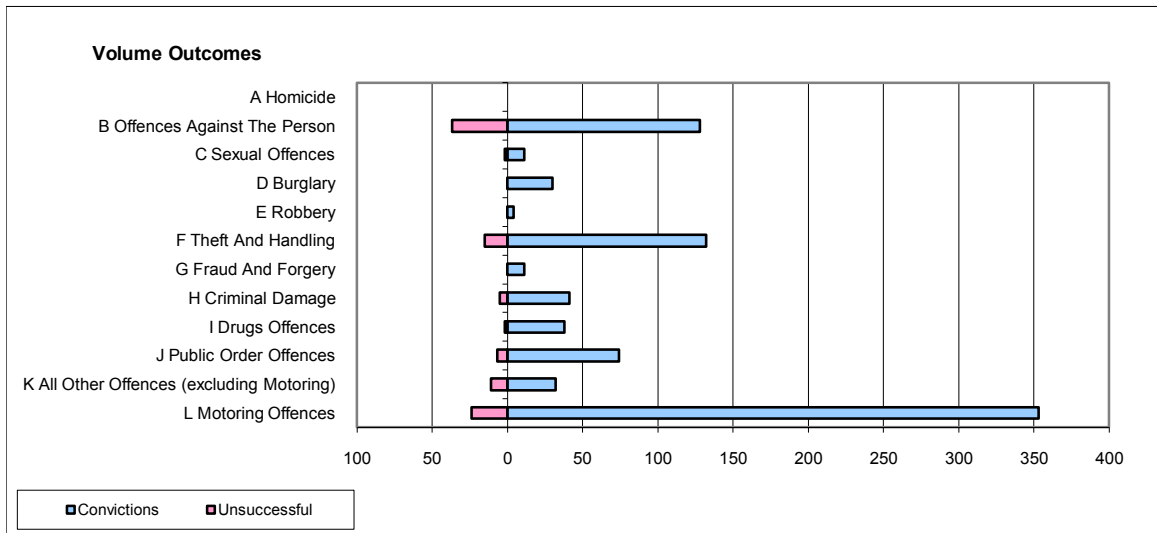
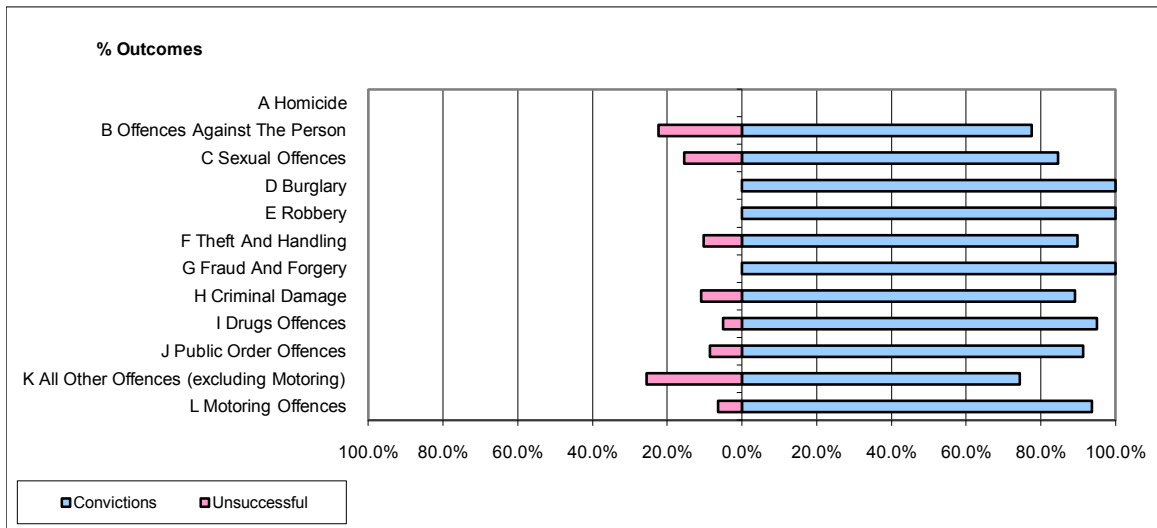


CPS OUTCOMES BY PRINCIPAL OFFENCE CATEGORY

December 2009

P26-Norfolk



	Convictions		Unsuccessful	
	Number of Defendants	%	Number of Defendants	%
A Homicide	0	0	0	0
B Offences Against The Person	128	77.6%	37	22.4%
C Sexual Offences	11	84.6%	2	15.4%
D Burglary	30	100.0%	0	0.0%
E Robbery	4	100.0%	0	0.0%
F Theft And Handling	132	89.8%	15	10.2%
G Fraud And Forgery	11	100.0%	0	0.0%
H Criminal Damage	41	89.1%	5	10.9%
I Drugs Offences	38	95.0%	2	5.0%
J Public Order Offences	74	91.4%	7	8.6%
K All Other Offences (excluding Motoring)	32	74.4%	11	25.6%
L Motoring Offences	353	93.6%	24	6.4%
Admin Finalisations	0	0.0%	16	100.0%
TOTAL	854	87.8%	119	12.2%