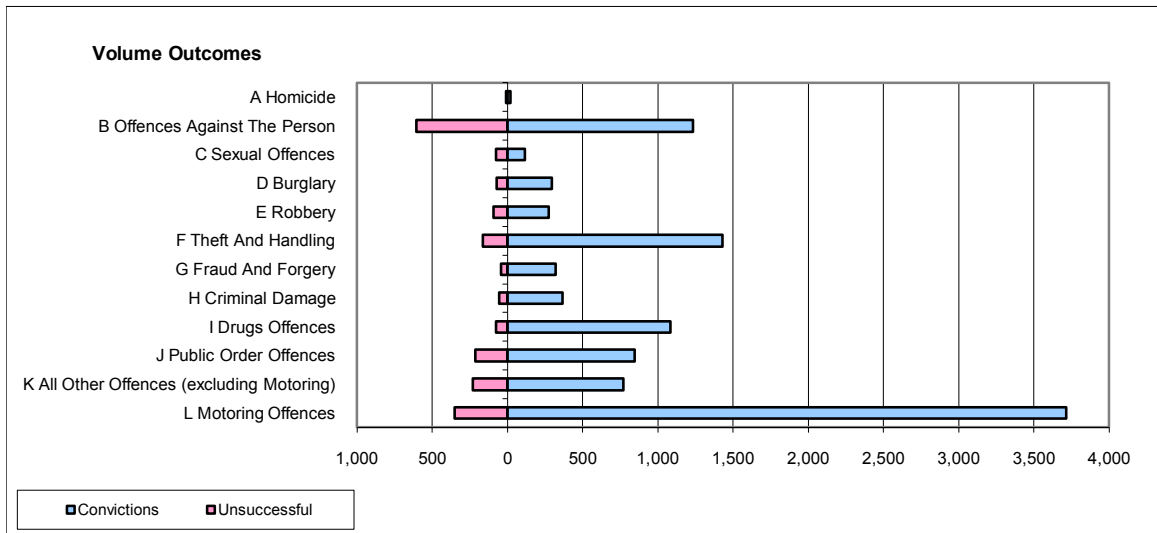
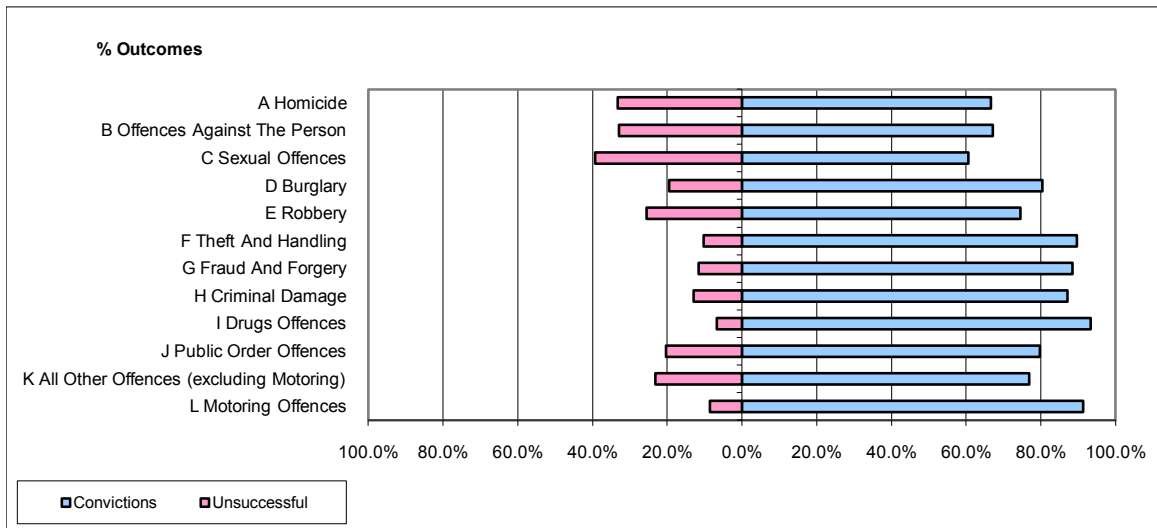


CPS OUTCOMES BY PRINCIPAL OFFENCE CATEGORY

December 2009

P25-Metropolitan&City



	Convictions		Unsuccessful	
	Number of Defendants	%	Number of Defendants	%
A Homicide	20	66.7%	10	33.3%
B Offences Against The Person	1,234	67.1%	605	32.9%
C Sexual Offences	117	60.6%	76	39.4%
D Burglary	296	80.4%	72	19.6%
E Robbery	272	74.5%	93	25.5%
F Theft And Handling	1,430	89.7%	164	10.3%
G Fraud And Forgery	321	88.4%	42	11.6%
H Criminal Damage	364	87.1%	54	12.9%
I Drugs Offences	1,085	93.3%	78	6.7%
J Public Order Offences	844	79.7%	215	20.3%
K All Other Offences (excluding Motoring)	769	76.8%	232	23.2%
L Motoring Offences	3,715	91.4%	350	8.6%
Admin Finalisations	0	0.0%	302	100.0%
TOTAL	10,467	82.0%	2,293	18.0%