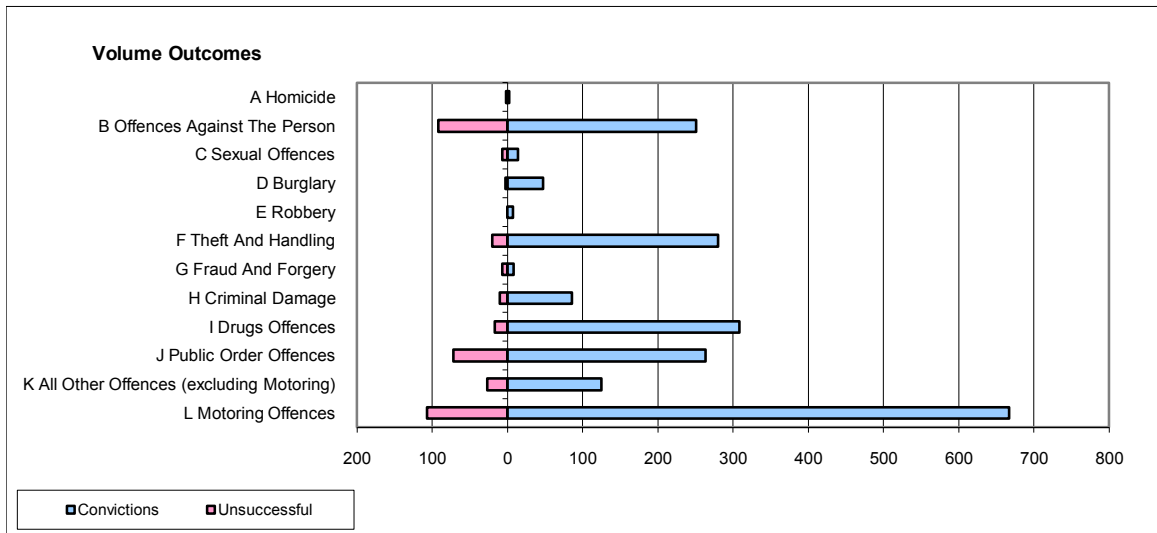
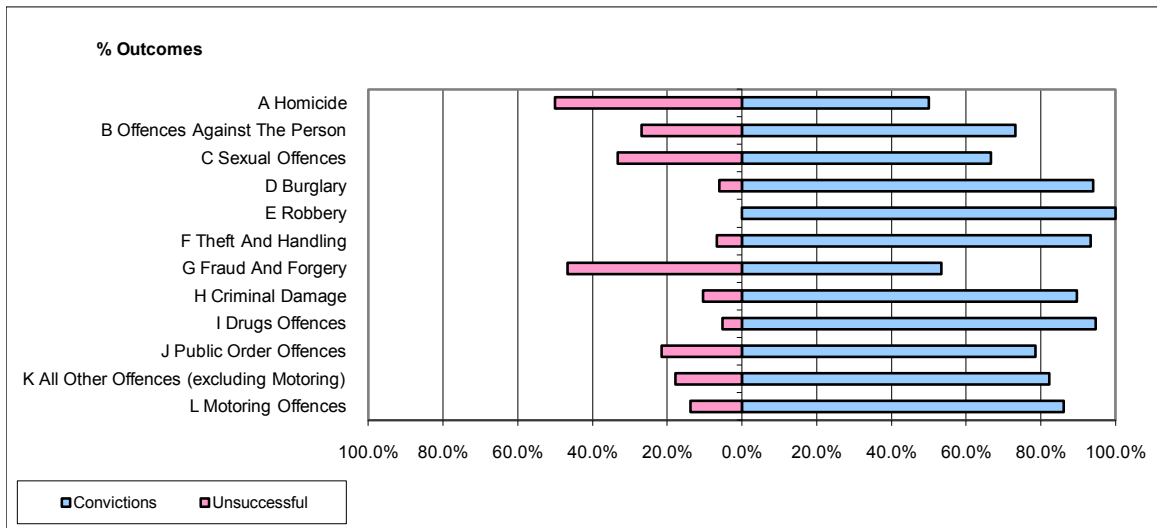


CPS OUTCOMES BY PRINCIPAL OFFENCE CATEGORY

December 2009

P24-Merseyside



	Convictions		Unsuccessful	
	Number of Defendants	%	Number of Defendants	%
A Homicide	2	50.0%	2	50.0%
B Offences Against The Person	251	73.2%	92	26.8%
C Sexual Offences	14	66.7%	7	33.3%
D Burglary	47	94.0%	3	6.0%
E Robbery	7	100.0%	0	0.0%
F Theft And Handling	280	93.3%	20	6.7%
G Fraud And Forgery	8	53.3%	7	46.7%
H Criminal Damage	86	89.6%	10	10.4%
I Drugs Offences	308	94.8%	17	5.2%
J Public Order Offences	263	78.5%	72	21.5%
K All Other Offences (excluding Motoring)	125	82.2%	27	17.8%
L Motoring Offences	667	86.2%	107	13.8%
Admin Finalisations	0	0.0%	27	100.0%
TOTAL	2,058	84.0%	391	16.0%