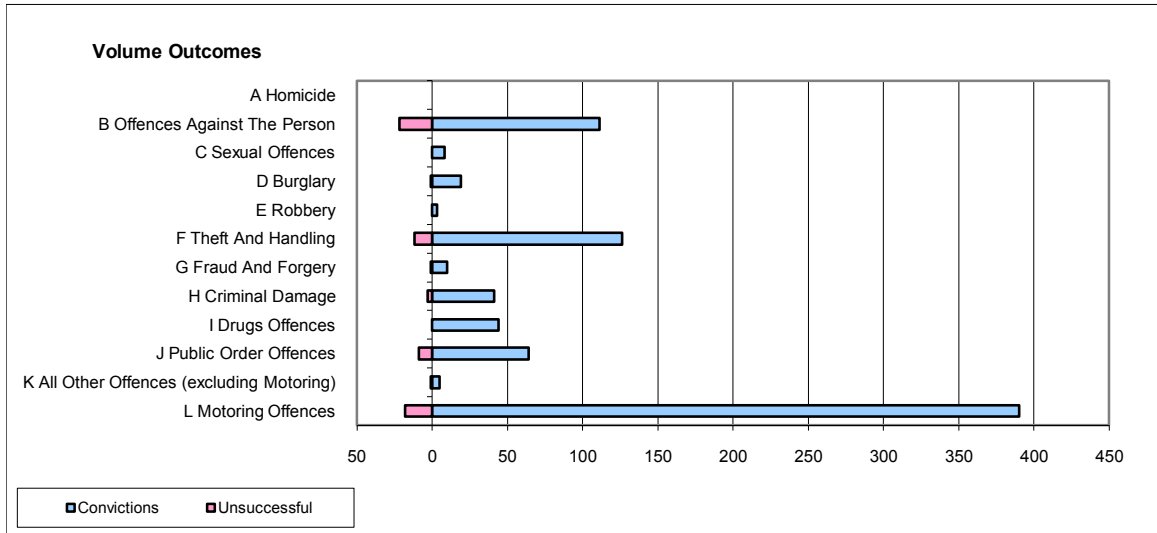
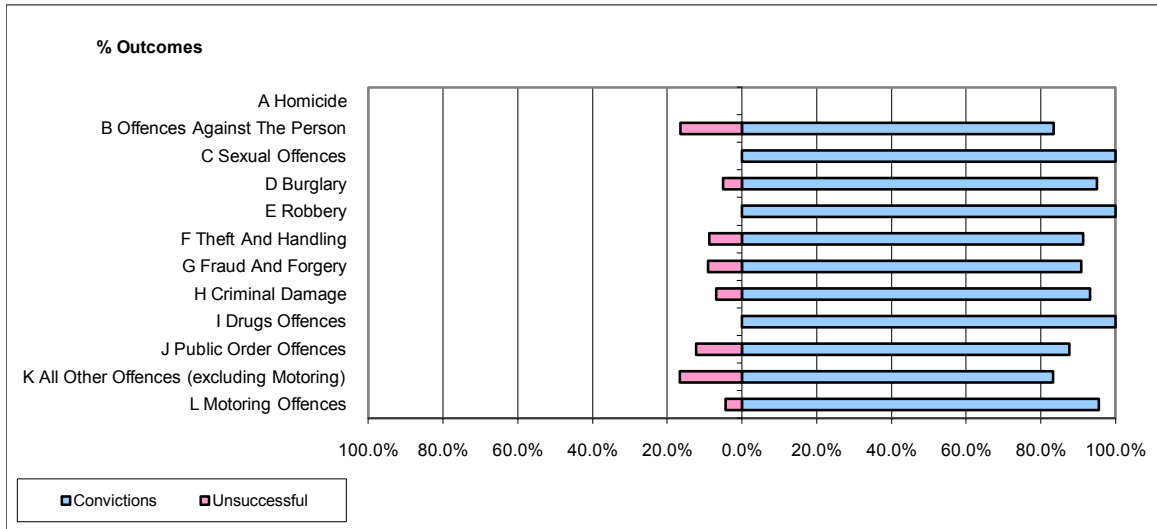


CPS OUTCOMES BY PRINCIPAL OFFENCE CATEGORY

December 2009

P23-Lincolnshire



	Convictions		Unsuccessful	
	Number of Defendants	%	Number of Defendants	%
A Homicide	0	0	0	0
B Offences Against The Person	111	83.5%	22	16.5%
C Sexual Offences	8	100.0%	0	0.0%
D Burglary	19	95.0%	1	5.0%
E Robbery	3	100.0%	0	0.0%
F Theft And Handling	126	91.3%	12	8.7%
G Fraud And Forgery	10	90.9%	1	9.1%
H Criminal Damage	41	93.2%	3	6.8%
I Drugs Offences	44	100.0%	0	0.0%
J Public Order Offences	64	87.7%	9	12.3%
K All Other Offences (excluding Motoring)	5	83.3%	1	16.7%
L Motoring Offences	390	95.6%	18	4.4%
Admin Finalisations	0	0.0%	11	100.0%
TOTAL	821	91.3%	78	8.7%