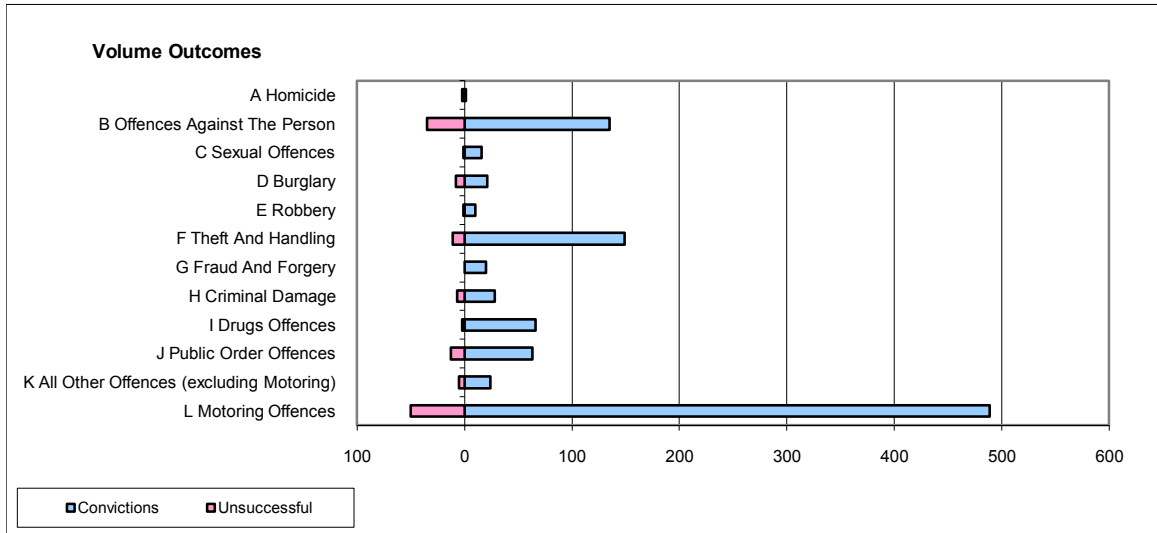
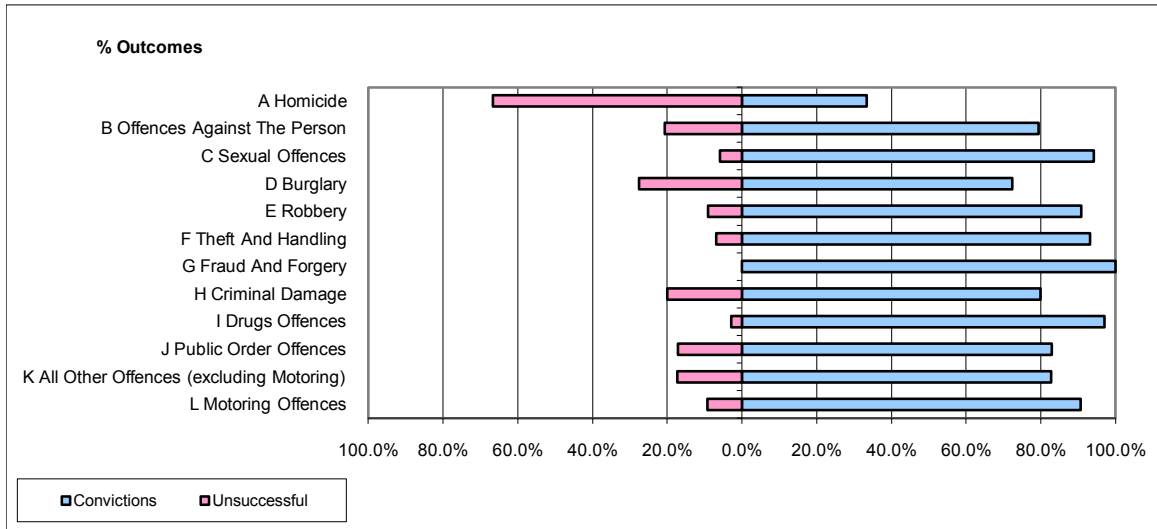


**CPS OUTCOMES BY PRINCIPAL OFFENCE CATEGORY**

**December 2009**

**P22-Leicestershire**



	Convictions		Unsuccessful	
	Number of Defendants	%	Number of Defendants	%
<b>A Homicide</b>	1	33.3%	2	66.7%
<b>B Offences Against The Person</b>	135	79.4%	35	20.6%
<b>C Sexual Offences</b>	16	94.1%	1	5.9%
<b>D Burglary</b>	21	72.4%	8	27.6%
<b>E Robbery</b>	10	90.9%	1	9.1%
<b>F Theft And Handling</b>	149	93.1%	11	6.9%
<b>G Fraud And Forgery</b>	20	100.0%	0	0.0%
<b>H Criminal Damage</b>	28	80.0%	7	20.0%
<b>I Drugs Offences</b>	66	97.1%	2	2.9%
<b>J Public Order Offences</b>	63	82.9%	13	17.1%
<b>K All Other Offences (excluding Motoring)</b>	24	82.8%	5	17.2%
<b>L Motoring Offences</b>	489	90.7%	50	9.3%
<b>Admin Finalisations</b>	0	0.0%	12	100.0%
<b>TOTAL</b>	<b>1,022</b>	<b>87.4%</b>	<b>147</b>	<b>12.6%</b>