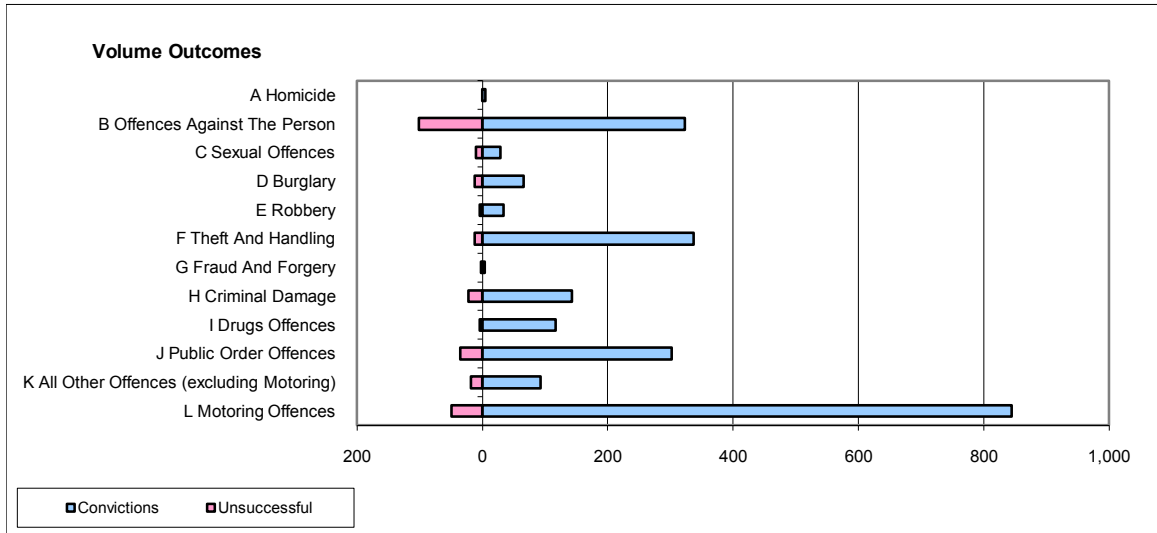
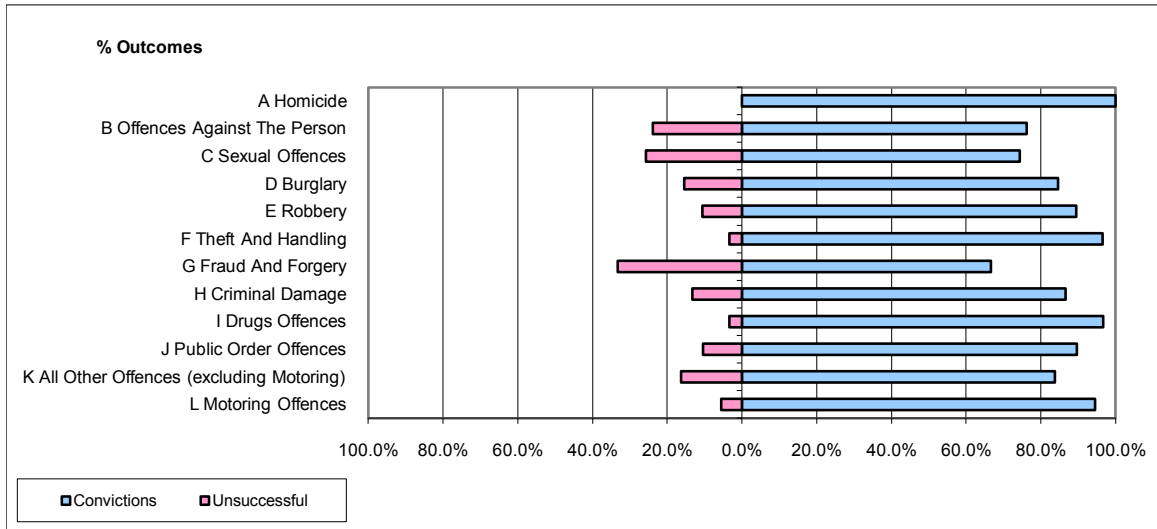


CPS OUTCOMES BY PRINCIPAL OFFENCE CATEGORY

December 2009

P21-Lancashire



	Convictions		Unsuccessful	
	Number of Defendants	%	Number of Defendants	%
A Homicide	5	100.0%	0	0.0%
B Offences Against The Person	323	76.2%	101	23.8%
C Sexual Offences	29	74.4%	10	25.6%
D Burglary	66	84.6%	12	15.4%
E Robbery	34	89.5%	4	10.5%
F Theft And Handling	337	96.6%	12	3.4%
G Fraud And Forgery	4	66.7%	2	33.3%
H Criminal Damage	143	86.7%	22	13.3%
I Drugs Offences	117	96.7%	4	3.3%
J Public Order Offences	302	89.6%	35	10.4%
K All Other Offences (excluding Motoring)	93	83.8%	18	16.2%
L Motoring Offences	844	94.5%	49	5.5%
Admin Finalisations	0	0.0%	53	100.0%
TOTAL	2,297	87.7%	322	12.3%