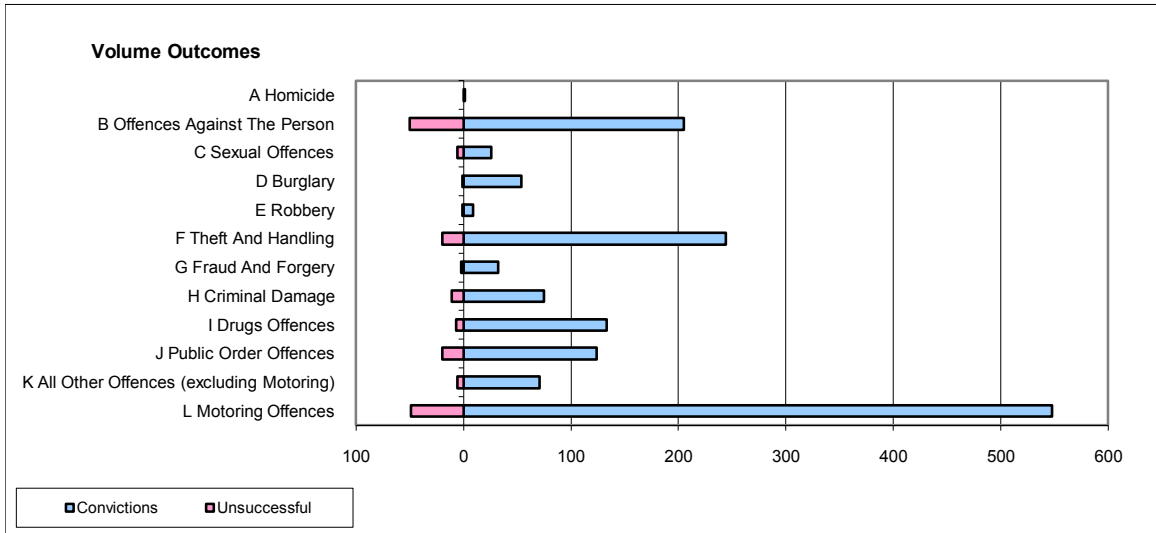
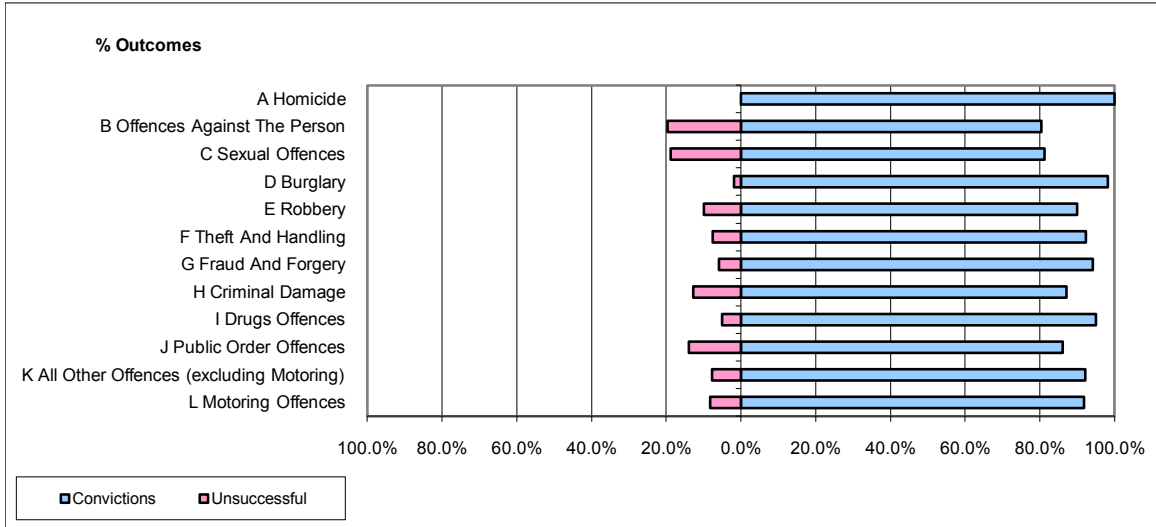


**CPS OUTCOMES BY PRINCIPAL OFFENCE CATEGORY**

**December 2009**

**P20-Kent**



	Convictions		Unsuccessful	
	Number of Defendants	%	Number of Defendants	%
<b>A Homicide</b>	1	100.0%	0	0.0%
<b>B Offences Against The Person</b>	205	80.4%	50	19.6%
<b>C Sexual Offences</b>	26	81.3%	6	18.8%
<b>D Burglary</b>	54	98.2%	1	1.8%
<b>E Robbery</b>	9	90.0%	1	10.0%
<b>F Theft And Handling</b>	244	92.4%	20	7.6%
<b>G Fraud And Forgery</b>	32	94.1%	2	5.9%
<b>H Criminal Damage</b>	75	87.2%	11	12.8%
<b>I Drugs Offences</b>	133	95.0%	7	5.0%
<b>J Public Order Offences</b>	124	86.1%	20	13.9%
<b>K All Other Offences (excluding Motoring)</b>	71	92.2%	6	7.8%
<b>L Motoring Offences</b>	548	91.8%	49	8.2%
<b>Admin Finalisations</b>	0	0.0%	22	100.0%
<b>TOTAL</b>	<b>1,522</b>	<b>88.6%</b>	<b>195</b>	<b>11.4%</b>