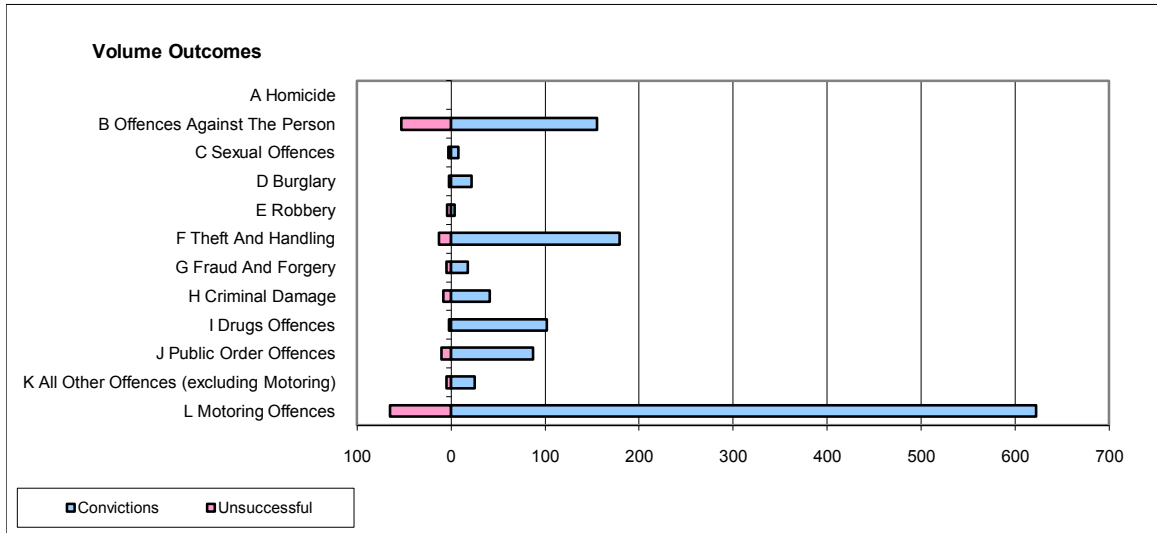
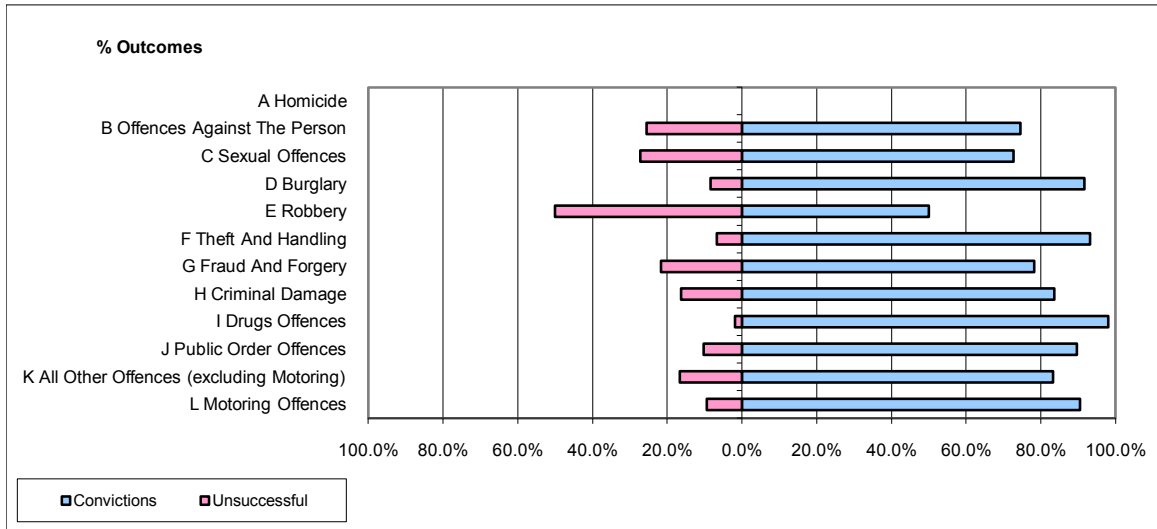


CPS OUTCOMES BY PRINCIPAL OFFENCE CATEGORY

December 2009

P18-Hertfordshire



	Convictions		Unsuccessful	
	Number of Defendants	%	Number of Defendants	%
A Homicide	0	0	0	0
B Offences Against The Person	155	74.5%	53	25.5%
C Sexual Offences	8	72.7%	3	27.3%
D Burglary	22	91.7%	2	8.3%
E Robbery	4	50.0%	4	50.0%
F Theft And Handling	179	93.2%	13	6.8%
G Fraud And Forgery	18	78.3%	5	21.7%
H Criminal Damage	41	83.7%	8	16.3%
I Drugs Offences	102	98.1%	2	1.9%
J Public Order Offences	87	89.7%	10	10.3%
K All Other Offences (excluding Motoring)	25	83.3%	5	16.7%
L Motoring Offences	622	90.5%	65	9.5%
Admin Finalisations	0	0.0%	22	100.0%
TOTAL	1,263	86.8%	192	13.2%