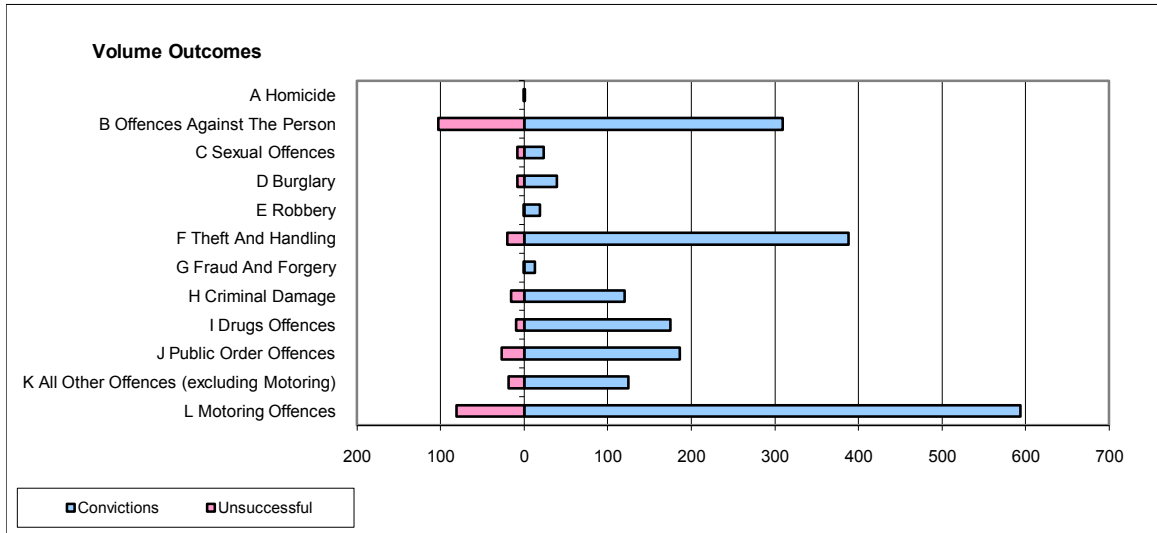
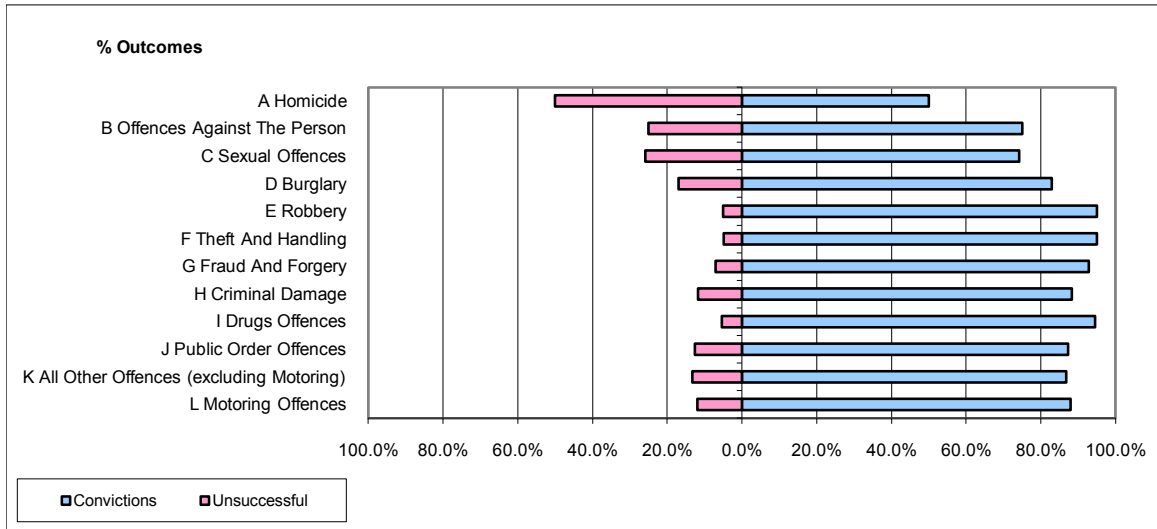


**CPS OUTCOMES BY PRINCIPAL OFFENCE CATEGORY**

**December 2009**

**P17-Hampshire**



	Convictions		Unsuccessful	
	Number of Defendants	%	Number of Defendants	%
<b>A Homicide</b>	1	50.0%	1	50.0%
<b>B Offences Against The Person</b>	309	75.0%	103	25.0%
<b>C Sexual Offences</b>	23	74.2%	8	25.8%
<b>D Burglary</b>	39	83.0%	8	17.0%
<b>E Robbery</b>	19	95.0%	1	5.0%
<b>F Theft And Handling</b>	388	95.1%	20	4.9%
<b>G Fraud And Forgery</b>	13	92.9%	1	7.1%
<b>H Criminal Damage</b>	120	88.2%	16	11.8%
<b>I Drugs Offences</b>	175	94.6%	10	5.4%
<b>J Public Order Offences</b>	186	87.3%	27	12.7%
<b>K All Other Offences (excluding Motoring)</b>	125	86.8%	19	13.2%
<b>L Motoring Offences</b>	594	88.0%	81	12.0%
<b>Admin Finalisations</b>	0	0.0%	26	100.0%
<b>TOTAL</b>	<b>1,992</b>	<b>86.1%</b>	<b>321</b>	<b>13.9%</b>