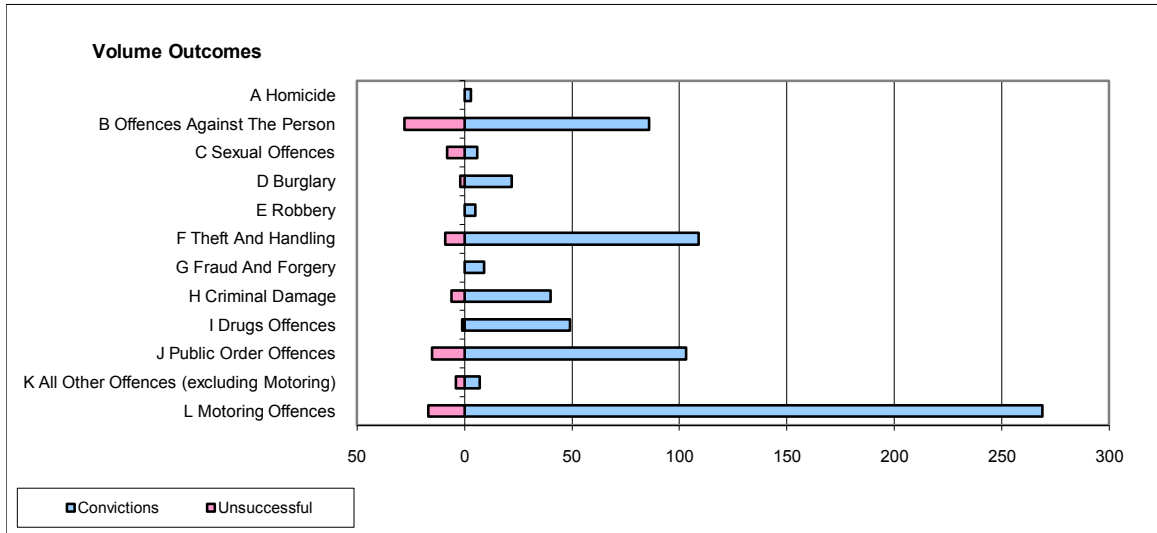
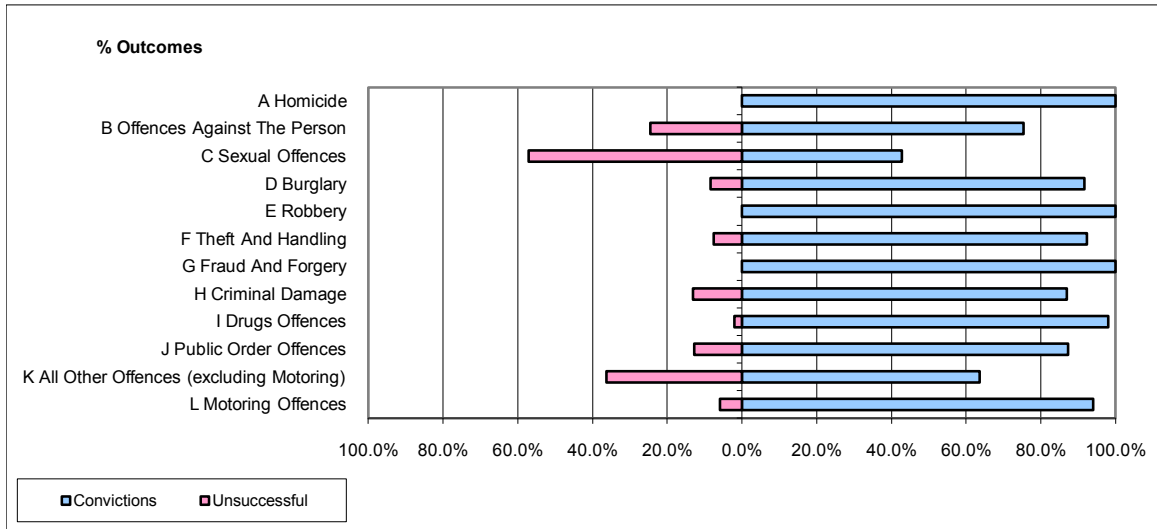


CPS OUTCOMES BY PRINCIPAL OFFENCE CATEGORY

December 2009

P16-Gwent



	Convictions		Unsuccessful	
	Number of Defendants	%	Number of Defendants	%
A Homicide	3	100.0%	0	0.0%
B Offences Against The Person	86	75.4%	28	24.6%
C Sexual Offences	6	42.9%	8	57.1%
D Burglary	22	91.7%	2	8.3%
E Robbery	5	100.0%	0	0.0%
F Theft And Handling	109	92.4%	9	7.6%
G Fraud And Forgery	9	100.0%	0	0.0%
H Criminal Damage	40	87.0%	6	13.0%
I Drugs Offences	49	98.0%	1	2.0%
J Public Order Offences	103	87.3%	15	12.7%
K All Other Offences (excluding Motoring)	7	63.6%	4	36.4%
L Motoring Offences	269	94.1%	17	5.9%
Admin Finalisations	0	0.0%	6	100.0%
TOTAL	708	88.1%	96	11.9%