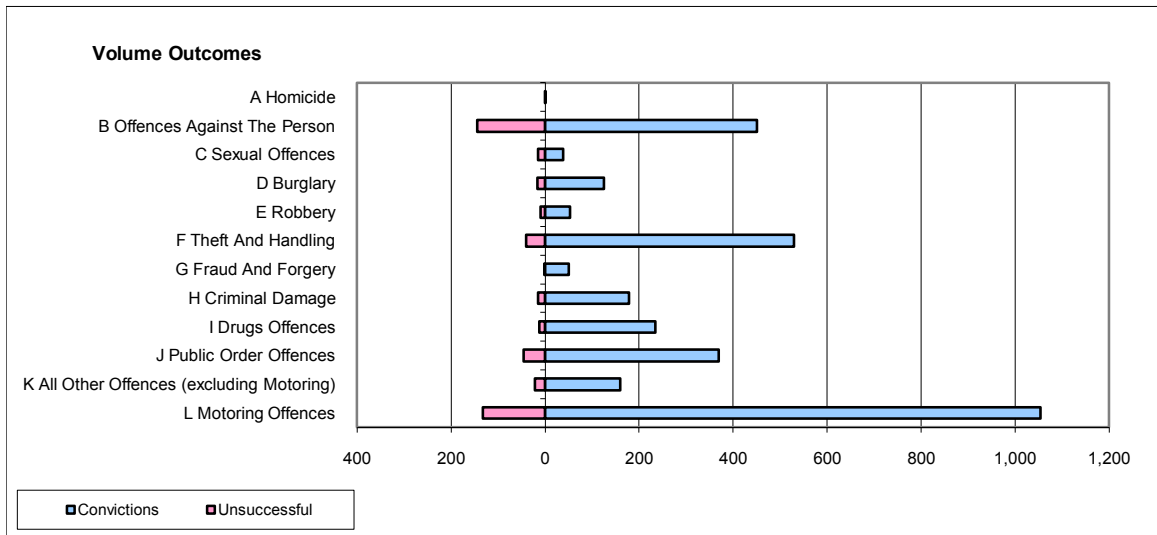
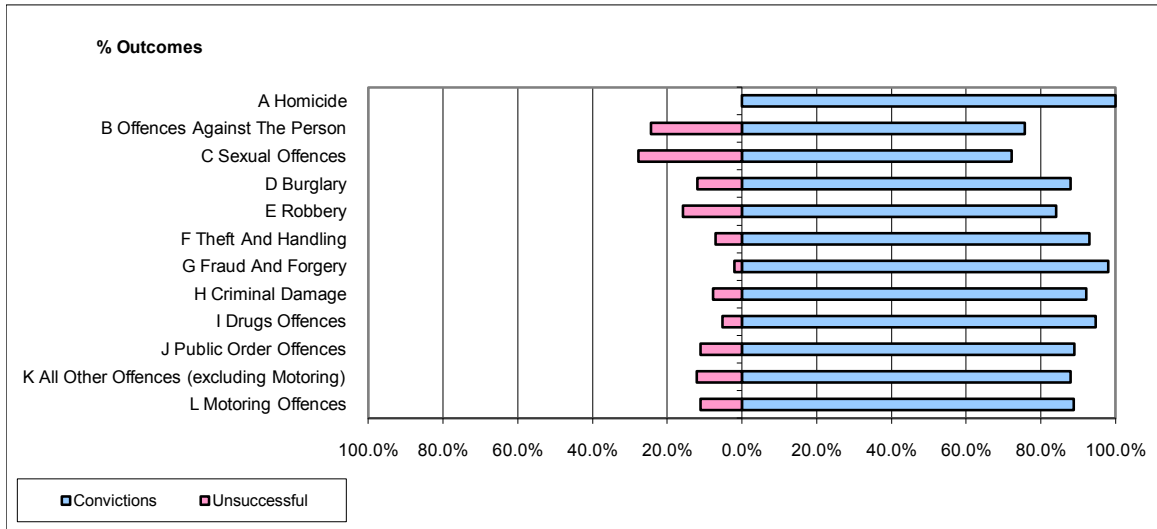


CPS OUTCOMES BY PRINCIPAL OFFENCE CATEGORY

December 2009

P15-GreaterManchester



	Convictions		Unsuccessful	
	Number of Defendants	%	Number of Defendants	%
A Homicide	1	100.0%	0	0.0%
B Offences Against The Person	451	75.7%	145	24.3%
C Sexual Offences	39	72.2%	15	27.8%
D Burglary	125	88.0%	17	12.0%
E Robbery	53	84.1%	10	15.9%
F Theft And Handling	530	93.0%	40	7.0%
G Fraud And Forgery	50	98.0%	1	2.0%
H Criminal Damage	178	92.2%	15	7.8%
I Drugs Offences	235	94.8%	13	5.2%
J Public Order Offences	369	88.9%	46	11.1%
K All Other Offences (excluding Motoring)	160	87.9%	22	12.1%
L Motoring Offences	1,054	88.9%	132	11.1%
Admin Finalisations	0	0.0%	49	100.0%
TOTAL	3,245	86.5%	505	13.5%