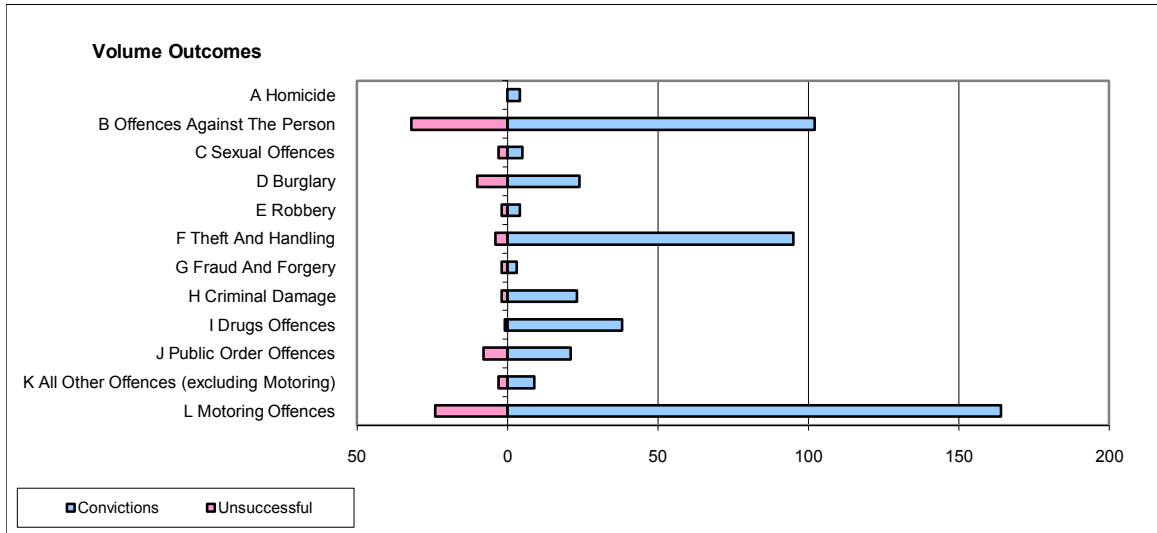
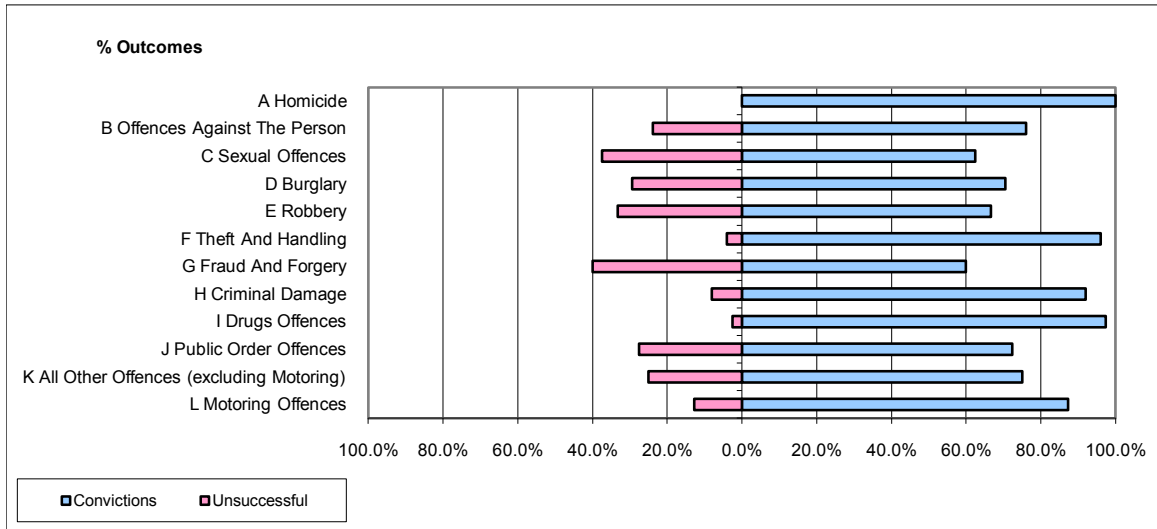


CPS OUTCOMES BY PRINCIPAL OFFENCE CATEGORY

December 2009

P14-Gloucestershire



	Convictions		Unsuccessful	
	Number of Defendants	%	Number of Defendants	%
A Homicide	4	100.0%	0	0.0%
B Offences Against The Person	102	76.1%	32	23.9%
C Sexual Offences	5	62.5%	3	37.5%
D Burglary	24	70.6%	10	29.4%
E Robbery	4	66.7%	2	33.3%
F Theft And Handling	95	96.0%	4	4.0%
G Fraud And Forgery	3	60.0%	2	40.0%
H Criminal Damage	23	92.0%	2	8.0%
I Drugs Offences	38	97.4%	1	2.6%
J Public Order Offences	21	72.4%	8	27.6%
K All Other Offences (excluding Motoring)	9	75.0%	3	25.0%
L Motoring Offences	164	87.2%	24	12.8%
Admin Finalisations	0	0.0%	5	100.0%
TOTAL	492	83.7%	96	16.3%