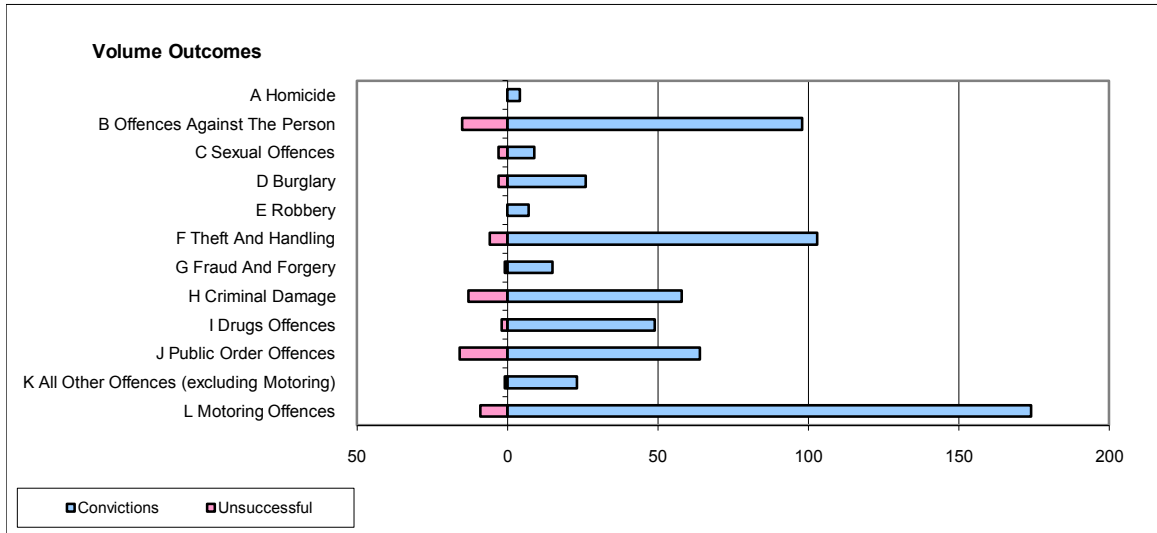
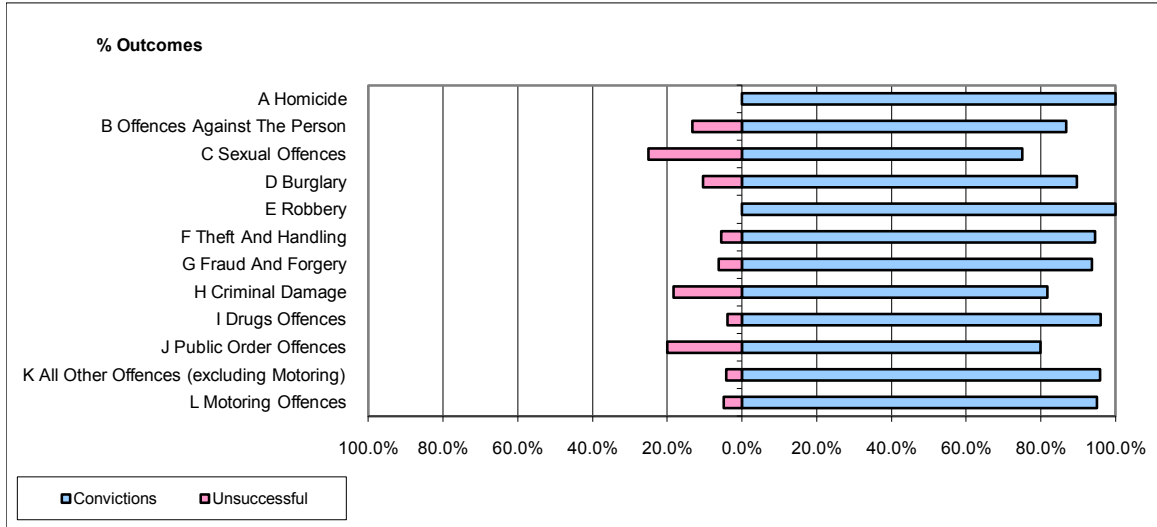


CPS OUTCOMES BY PRINCIPAL OFFENCE CATEGORY

December 2009

P11-Durham



	Convictions		Unsuccessful	
	Number of Defendants	%	Number of Defendants	%
A Homicide	4	100.0%	0	0.0%
B Offences Against The Person	98	86.7%	15	13.3%
C Sexual Offences	9	75.0%	3	25.0%
D Burglary	26	89.7%	3	10.3%
E Robbery	7	100.0%	0	0.0%
F Theft And Handling	103	94.5%	6	5.5%
G Fraud And Forgery	15	93.8%	1	6.3%
H Criminal Damage	58	81.7%	13	18.3%
I Drugs Offences	49	96.1%	2	3.9%
J Public Order Offences	64	80.0%	16	20.0%
K All Other Offences (excluding Motoring)	23	95.8%	1	4.2%
L Motoring Offences	174	95.1%	9	4.9%
Admin Finalisations	0	0.0%	2	100.0%
TOTAL	630	89.9%	71	10.1%