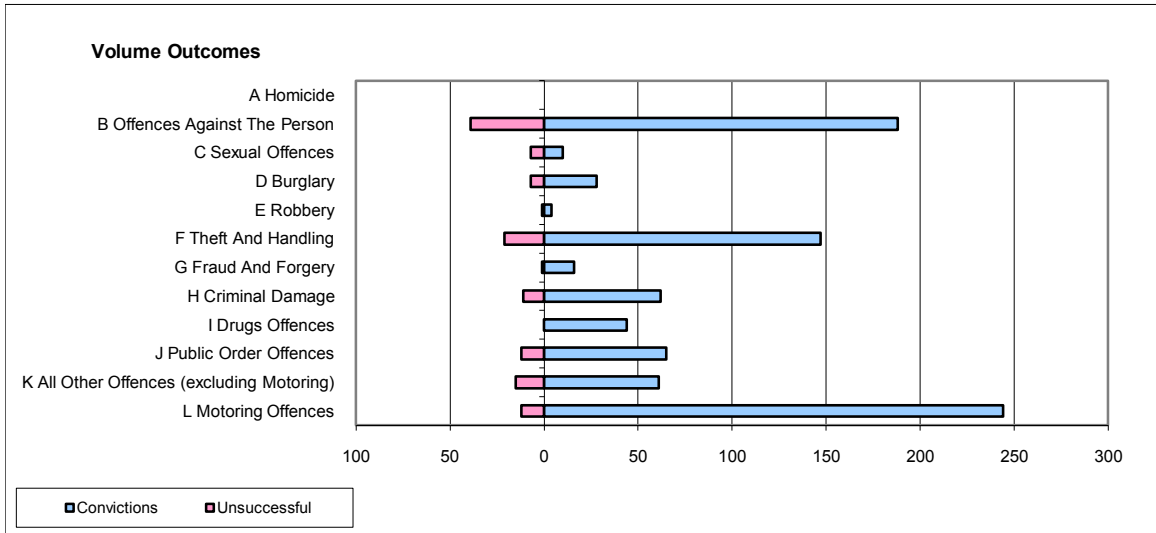
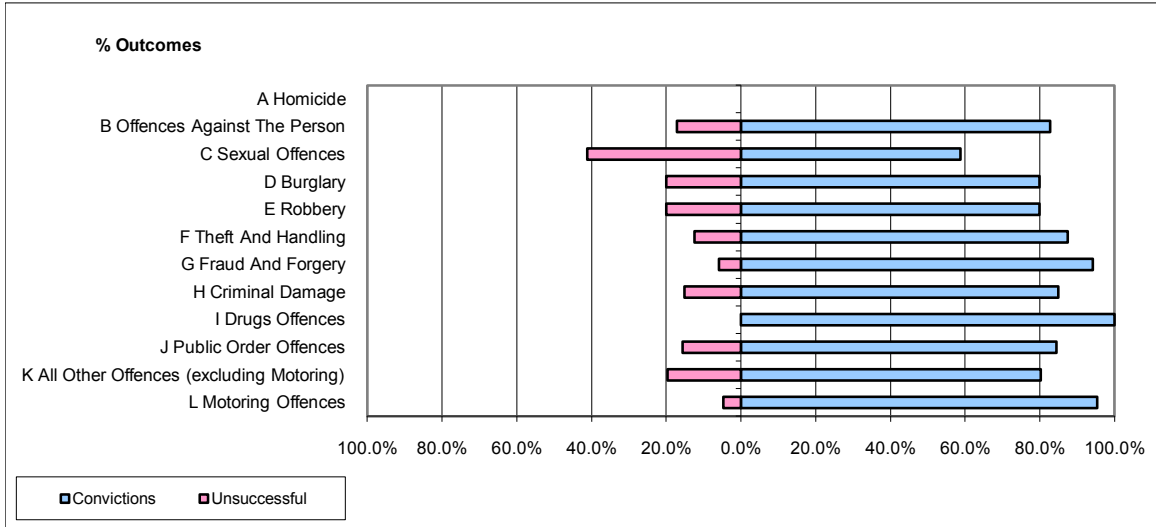


**CPS OUTCOMES BY PRINCIPAL OFFENCE CATEGORY**

**December 2009**

**P08-Derbyshire**



	Convictions		Unsuccessful	
	Number of Defendants	%	Number of Defendants	%
<b>A Homicide</b>	0	0	0	0
<b>B Offences Against The Person</b>	188	82.8%	39	17.2%
<b>C Sexual Offences</b>	10	58.8%	7	41.2%
<b>D Burglary</b>	28	80.0%	7	20.0%
<b>E Robbery</b>	4	80.0%	1	20.0%
<b>F Theft And Handling</b>	147	87.5%	21	12.5%
<b>G Fraud And Forgery</b>	16	94.1%	1	5.9%
<b>H Criminal Damage</b>	62	84.9%	11	15.1%
<b>I Drugs Offences</b>	44	100.0%	0	0.0%
<b>J Public Order Offences</b>	65	84.4%	12	15.6%
<b>K All Other Offences (excluding Motoring)</b>	61	80.3%	15	19.7%
<b>L Motoring Offences</b>	244	95.3%	12	4.7%
<b>Admin Finalisations</b>	0	0.0%	11	100.0%
<b>TOTAL</b>	<b>869</b>	<b>86.4%</b>	<b>137</b>	<b>13.6%</b>