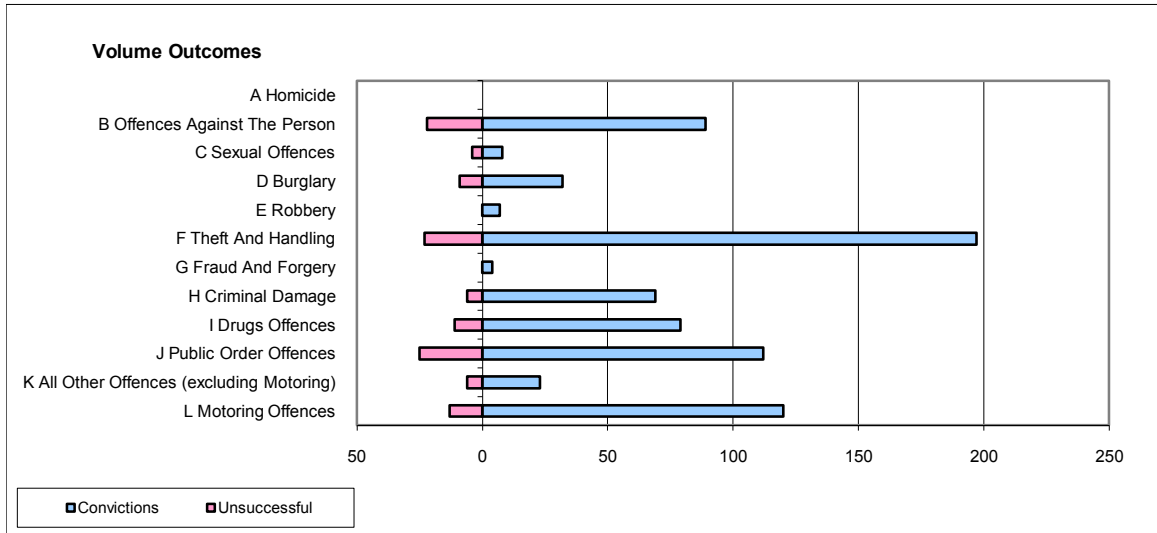
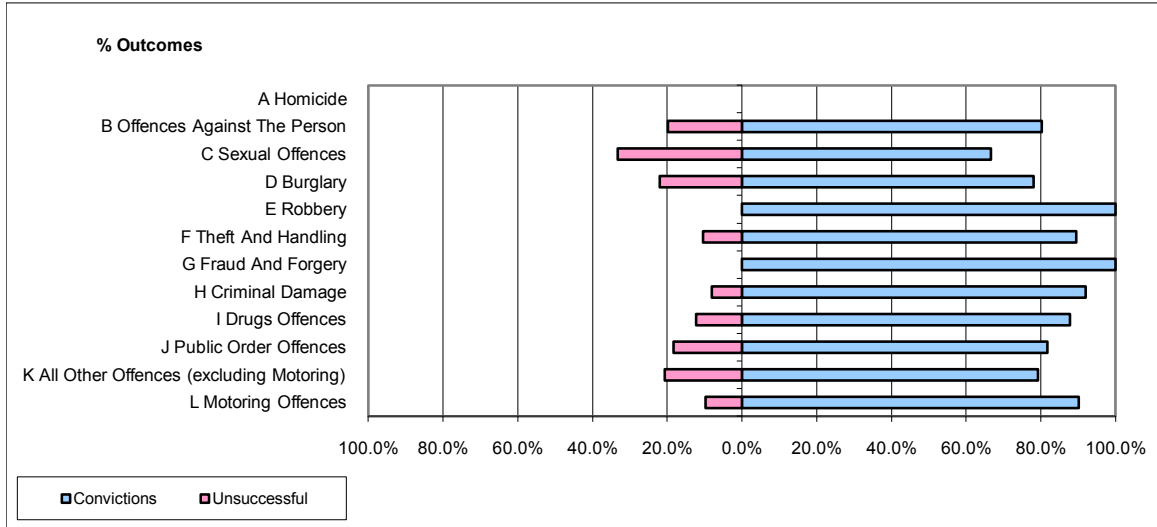


**CPS OUTCOMES BY PRINCIPAL OFFENCE CATEGORY**

**December 2009**

**P06-Cleveland**



	Convictions		Unsuccessful	
	Number of Defendants	%	Number of Defendants	%
<b>A Homicide</b>	0	0	0	0
<b>B Offences Against The Person</b>	89	80.2%	22	19.8%
<b>C Sexual Offences</b>	8	66.7%	4	33.3%
<b>D Burglary</b>	32	78.0%	9	22.0%
<b>E Robbery</b>	7	100.0%	0	0.0%
<b>F Theft And Handling</b>	197	89.5%	23	10.5%
<b>G Fraud And Forgery</b>	4	100.0%	0	0.0%
<b>H Criminal Damage</b>	69	92.0%	6	8.0%
<b>I Drugs Offences</b>	79	87.8%	11	12.2%
<b>J Public Order Offences</b>	112	81.8%	25	18.2%
<b>K All Other Offences (excluding Motoring)</b>	23	79.3%	6	20.7%
<b>L Motoring Offences</b>	120	90.2%	13	9.8%
<b>Admin Finalisations</b>	0	0.0%	6	100.0%
<b>TOTAL</b>	<b>740</b>	<b>85.5%</b>	<b>125</b>	<b>14.5%</b>