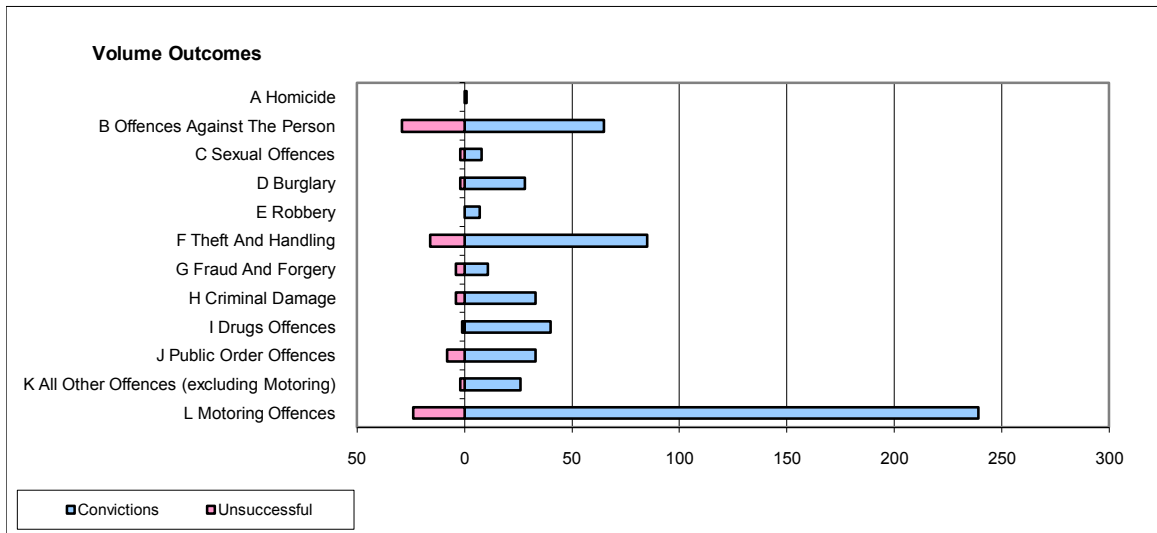
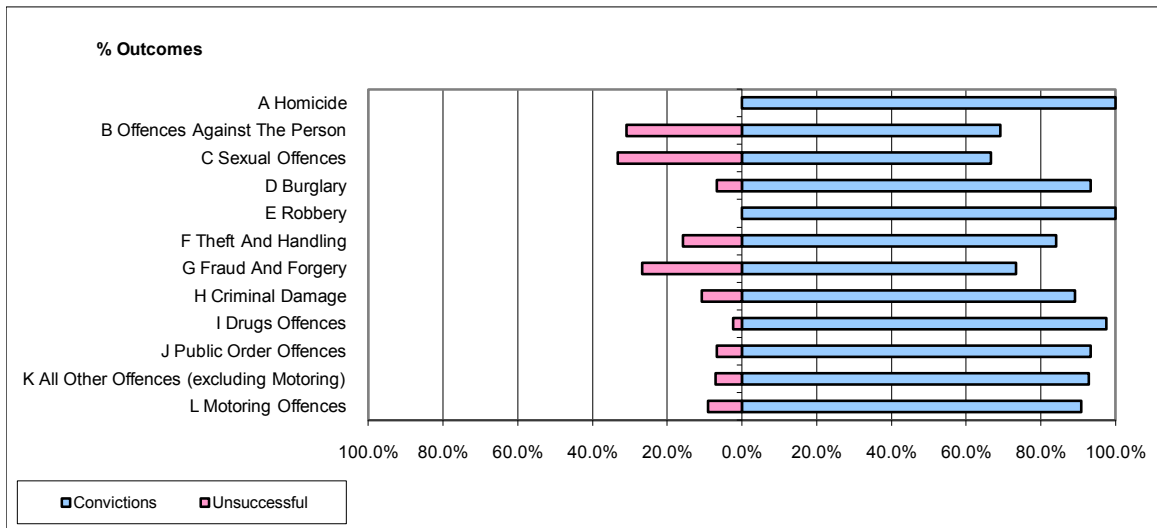


CPS OUTCOMES BY PRINCIPAL OFFENCE CATEGORY

December 2009

P02-Bedfordshire



	Convictions		Unsuccessful	
	Number of Defendants	%	Number of Defendants	%
A Homicide	1	100.0%	0	0.0%
B Offences Against The Person	65	69.1%	29	30.9%
C Sexual Offences	8	66.7%	2	33.3%
D Burglary	28	93.3%	2	6.7%
E Robbery	7	100.0%	0	0.0%
F Theft And Handling	85	84.2%	16	15.8%
G Fraud And Forgery	11	73.3%	4	26.7%
H Criminal Damage	33	89.2%	4	10.8%
I Drugs Offences	40	97.6%	1	2.4%
J Public Order Offences	33	93.3%	8	6.7%
K All Other Offences (excluding Motoring)	26	92.9%	2	7.1%
L Motoring Offences	239	90.9%	24	9.1%
Admin Finalisations	0	0.0%	5	100.0%
TOTAL	576	85.6%	97	14.4%