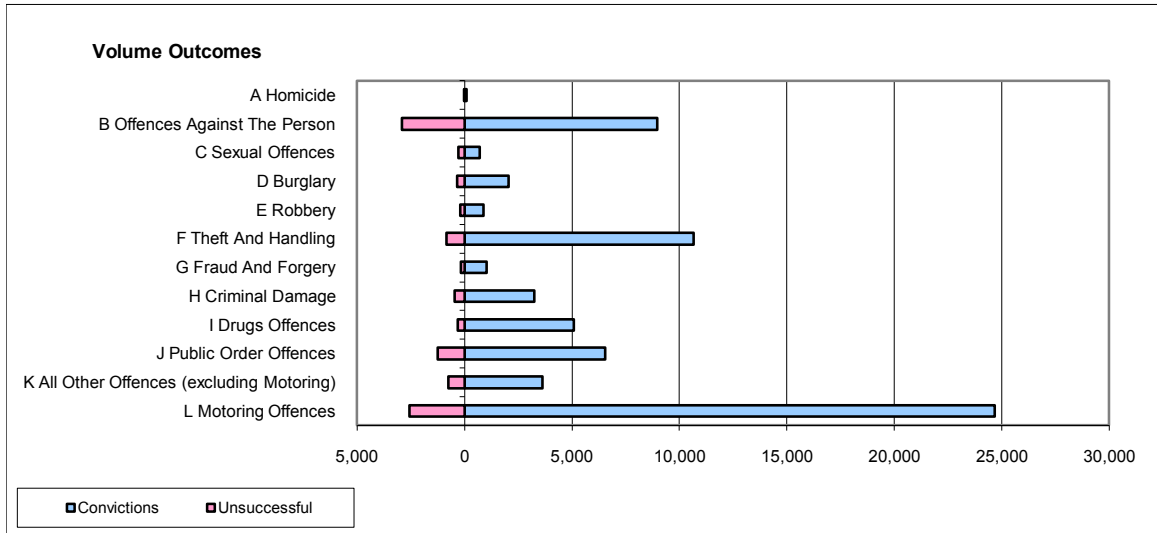
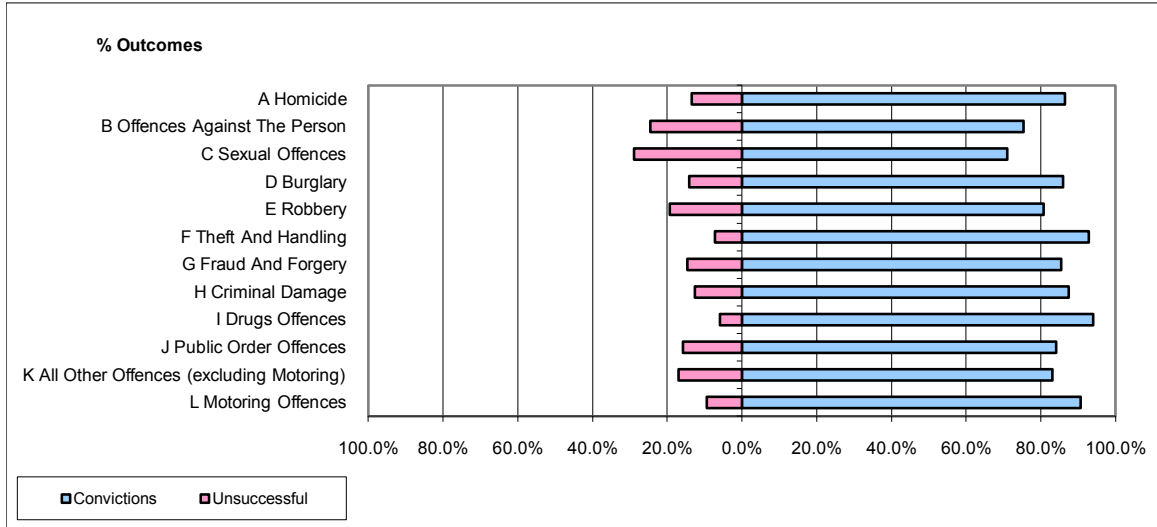


CPS OUTCOMES BY PRINCIPAL OFFENCE CATEGORY

November 2009

42 Areas



	Convictions		Unsuccessful	
	Number of Defendants	%	Number of Defendants	%
A Homicide	90	86.5%	14	13.5%
B Offences Against The Person	8,972	75.4%	2,920	24.6%
C Sexual Offences	702	71.1%	286	28.9%
D Burglary	2,058	85.9%	337	14.1%
E Robbery	870	80.7%	208	19.3%
F Theft And Handling	10,660	92.8%	831	7.2%
G Fraud And Forgery	1,030	85.4%	176	14.6%
H Criminal Damage	3,247	87.4%	467	12.6%
I Drugs Offences	5,083	94.0%	322	6.0%
J Public Order Offences	6,558	84.1%	1,236	15.9%
K All Other Offences (excluding Motoring)	3,640	83.0%	744	17.0%
L Motoring Offences	24,663	90.6%	2,558	9.4%
Admin Finalisations	0	0.0%	842	100.0%
TOTAL	67,573	86.1%	10,941	13.9%