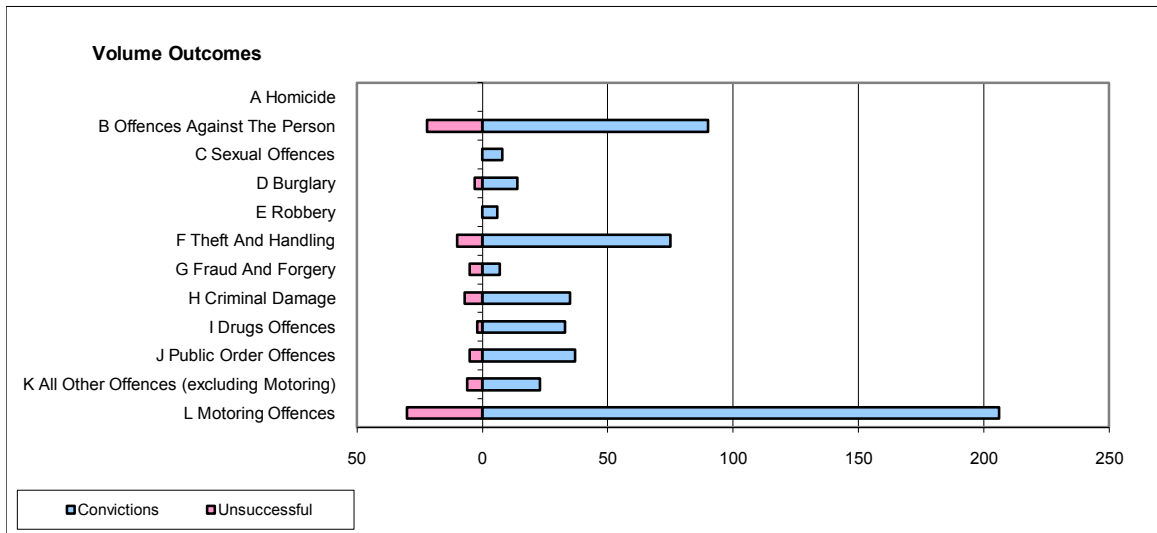
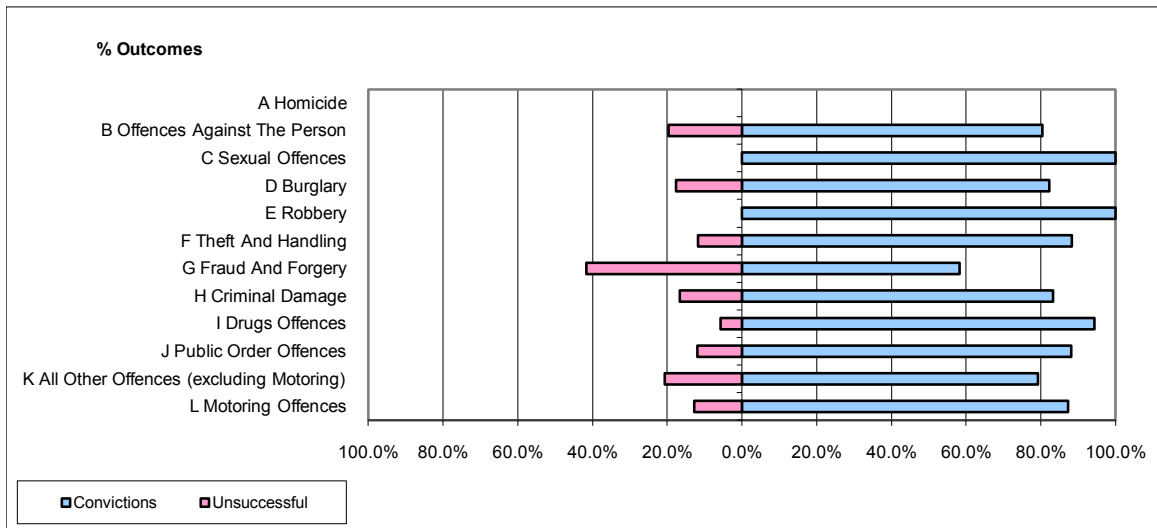


CPS OUTCOMES BY PRINCIPAL OFFENCE CATEGORY

November 2009

P43-Wiltshire



	Convictions		Unsuccessful	
	Number of Defendants	%	Number of Defendants	%
A Homicide	0	0	0	0
B Offences Against The Person	90	80.4%	22	19.6%
C Sexual Offences	8	100.0%	0	0.0%
D Burglary	14	82.4%	3	17.6%
E Robbery	6	100.0%	0	0.0%
F Theft And Handling	75	88.2%	10	11.8%
G Fraud And Forgery	7	58.3%	5	41.7%
H Criminal Damage	35	83.3%	7	16.7%
I Drugs Offences	33	94.3%	2	5.7%
J Public Order Offences	37	88.1%	5	11.9%
K All Other Offences (excluding Motoring)	23	79.3%	6	20.7%
L Motoring Offences	206	87.3%	30	12.7%
Admin Finalisations	0	0.0%	5	100.0%
TOTAL	534	84.9%	95	15.1%