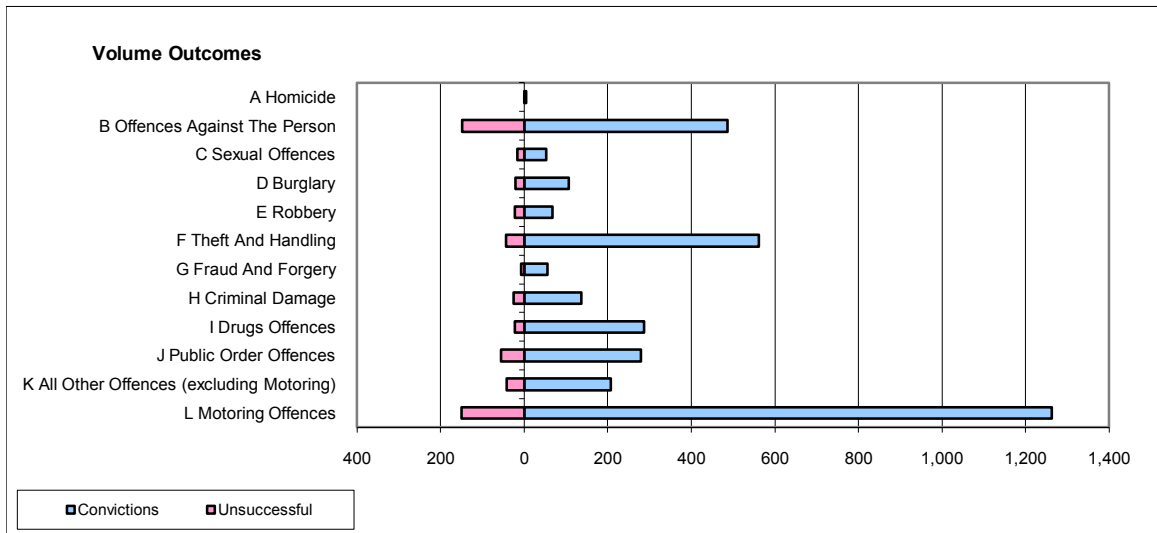
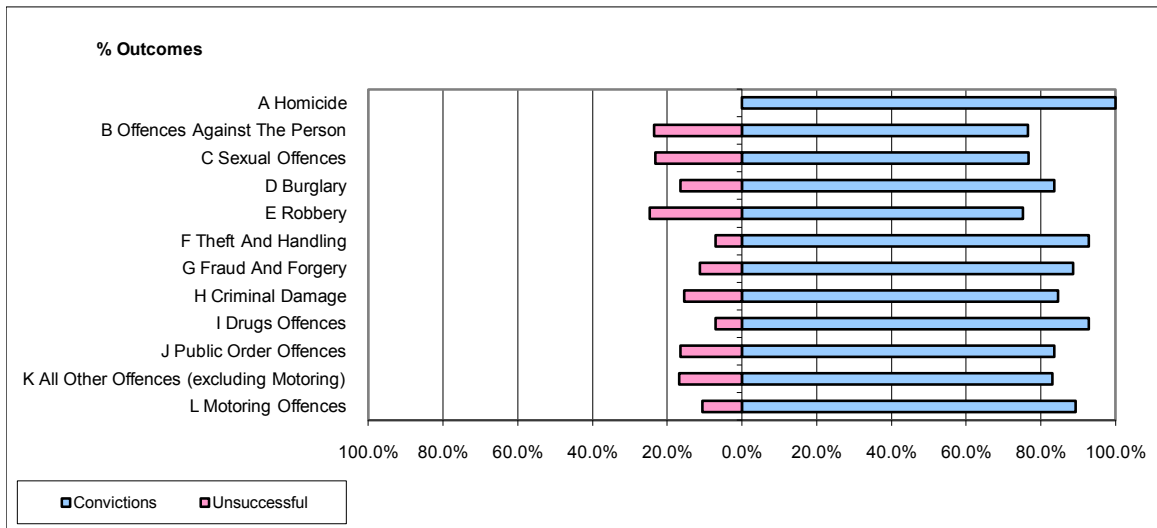


CPS OUTCOMES BY PRINCIPAL OFFENCE CATEGORY

November 2009

P41-WestMidlands



	Convictions		Unsuccessful	
	Number of Defendants	%	Number of Defendants	%
A Homicide	5	100.0%	0	0.0%
B Offences Against The Person	486	76.5%	149	23.5%
C Sexual Offences	53	76.8%	16	23.2%
D Burglary	107	83.6%	21	16.4%
E Robbery	67	75.3%	22	24.7%
F Theft And Handling	561	92.9%	43	7.1%
G Fraud And Forgery	55	88.7%	7	11.3%
H Criminal Damage	137	84.6%	25	15.4%
I Drugs Offences	287	92.9%	22	7.1%
J Public Order Offences	280	83.6%	55	16.4%
K All Other Offences (excluding Motoring)	207	83.1%	42	16.9%
L Motoring Offences	1,262	89.4%	150	10.6%
Admin Finalisations	0	0.0%	41	100.0%
TOTAL	3,507	85.5%	593	14.5%