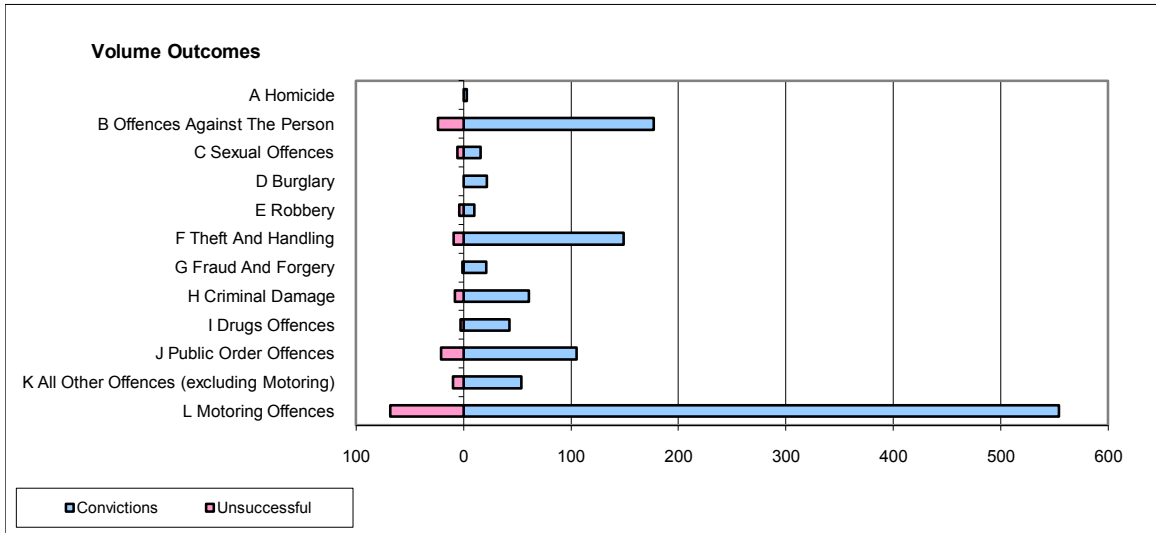
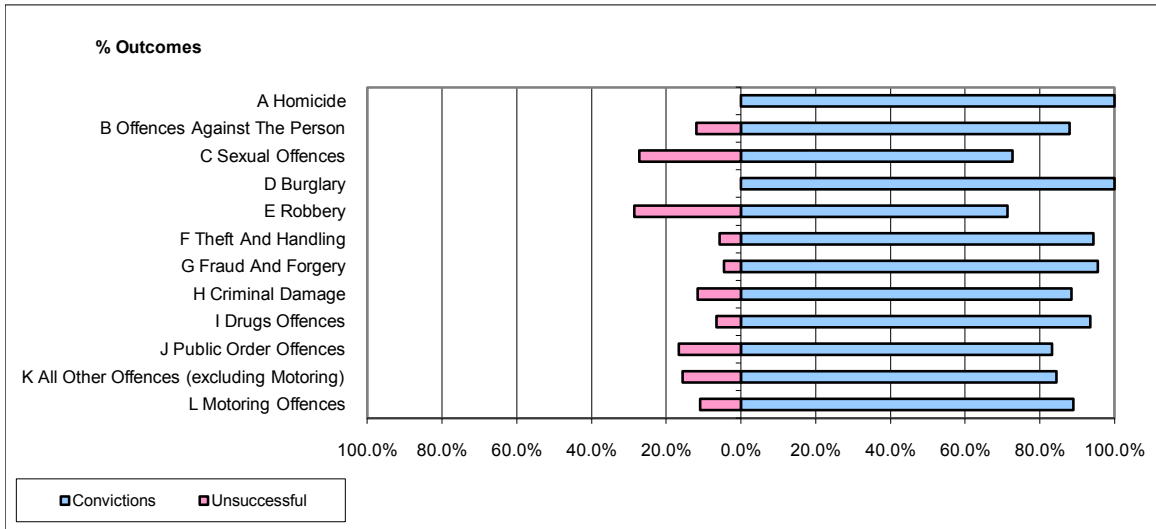


**CPS OUTCOMES BY PRINCIPAL OFFENCE CATEGORY**

**November 2009**

**P40-WestMercia**



	Convictions		Unsuccessful	
	Number of Defendants	%	Number of Defendants	%
<b>A Homicide</b>	3	100.0%	0	0.0%
<b>B Offences Against The Person</b>	177	88.1%	24	11.9%
<b>C Sexual Offences</b>	16	72.7%	6	27.3%
<b>D Burglary</b>	22	100.0%	0	0.0%
<b>E Robbery</b>	10	71.4%	4	28.6%
<b>F Theft And Handling</b>	149	94.3%	9	5.7%
<b>G Fraud And Forgery</b>	21	95.5%	1	4.5%
<b>H Criminal Damage</b>	61	88.4%	8	11.6%
<b>I Drugs Offences</b>	43	93.5%	3	6.5%
<b>J Public Order Offences</b>	105	83.3%	21	16.7%
<b>K All Other Offences (excluding Motoring)</b>	54	84.4%	10	15.6%
<b>L Motoring Offences</b>	554	89.1%	68	10.9%
<b>Admin Finalisations</b>	0	0.0%	10	100.0%
<b>TOTAL</b>	<b>1,215</b>	<b>88.1%</b>	<b>164</b>	<b>11.9%</b>