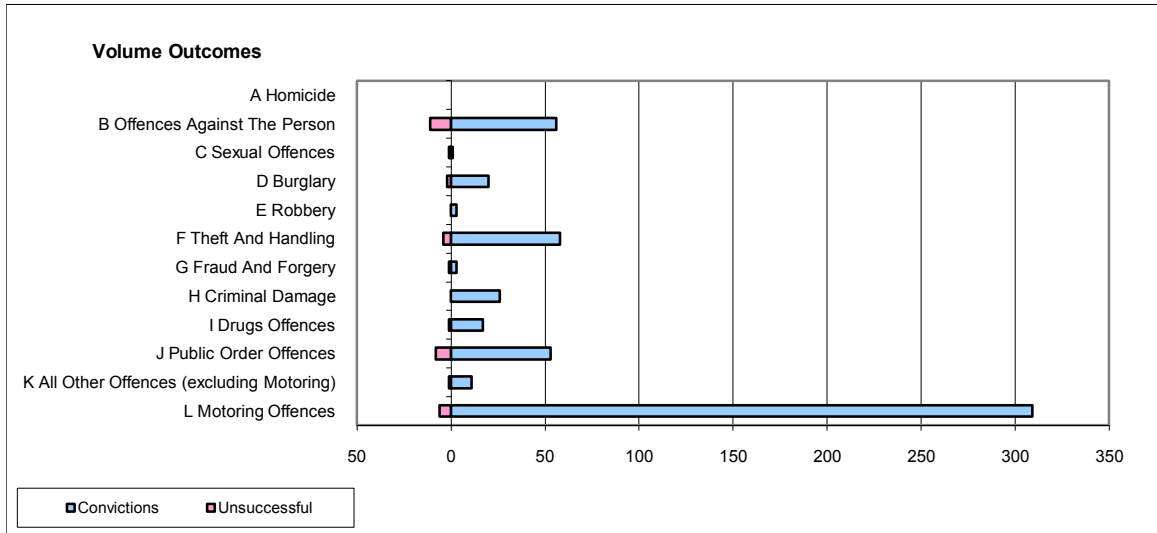
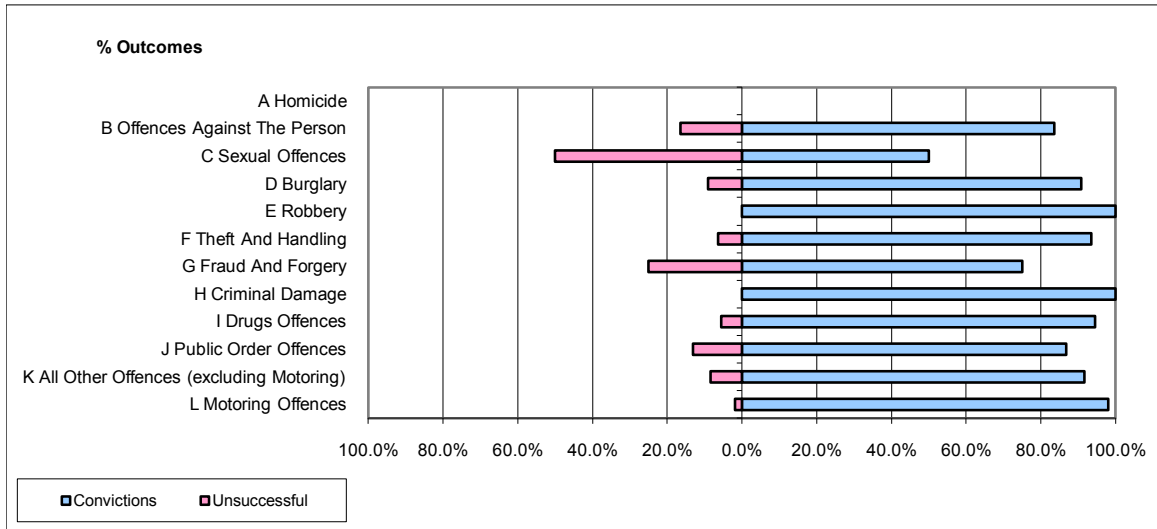


CPS OUTCOMES BY PRINCIPAL OFFENCE CATEGORY

November 2009

P39-Warwickshire



	Convictions		Unsuccessful	
	Number of Defendants	%	Number of Defendants	%
A Homicide	0	0	0	0
B Offences Against The Person	56	83.6%	11	16.4%
C Sexual Offences	1	50.0%	1	50.0%
D Burglary	20	90.9%	2	9.1%
E Robbery	3	100.0%	0	0.0%
F Theft And Handling	58	93.5%	4	6.5%
G Fraud And Forgery	3	75.0%	1	25.0%
H Criminal Damage	26	100.0%	0	0.0%
I Drugs Offences	17	94.4%	1	5.6%
J Public Order Offences	53	86.9%	8	13.1%
K All Other Offences (excluding Motoring)	11	91.7%	1	8.3%
L Motoring Offences	309	98.1%	6	1.9%
Admin Finalisations	0	0.0%	3	100.0%
TOTAL	557	93.6%	38	6.4%