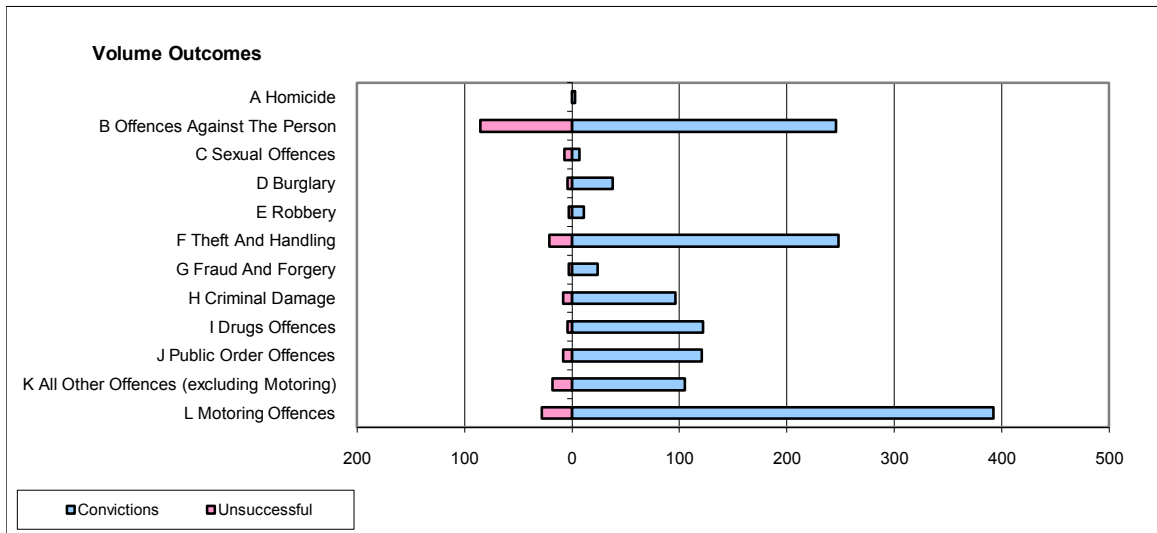
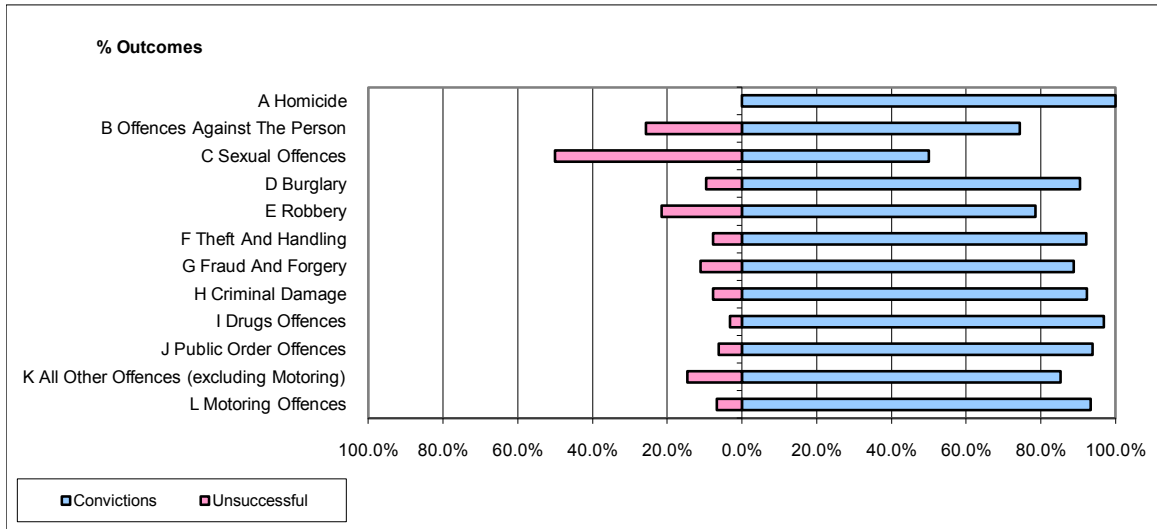


CPS OUTCOMES BY PRINCIPAL OFFENCE CATEGORY

November 2009

P37-Sussex



	Convictions		Unsuccessful	
	Number of Defendants	%	Number of Defendants	%
A Homicide	3	100.0%	0	0.0%
B Offences Against The Person	246	74.3%	85	25.7%
C Sexual Offences	7	50.0%	7	50.0%
D Burglary	38	90.5%	4	9.5%
E Robbery	11	78.6%	3	21.4%
F Theft And Handling	248	92.2%	21	7.8%
G Fraud And Forgery	24	88.9%	3	11.1%
H Criminal Damage	96	92.3%	8	7.7%
I Drugs Offences	122	96.8%	4	3.2%
J Public Order Offences	121	93.8%	8	6.2%
K All Other Offences (excluding Motoring)	105	85.4%	18	14.6%
L Motoring Offences	392	93.3%	28	6.7%
Admin Finalisations	0	0.0%	25	100.0%
TOTAL	1,413	86.8%	214	13.2%