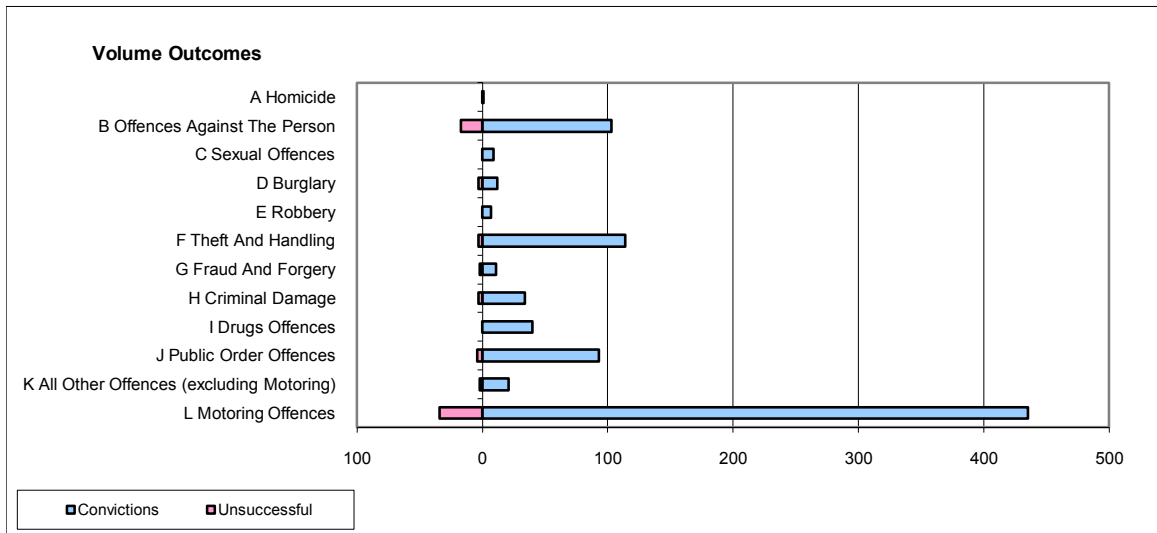
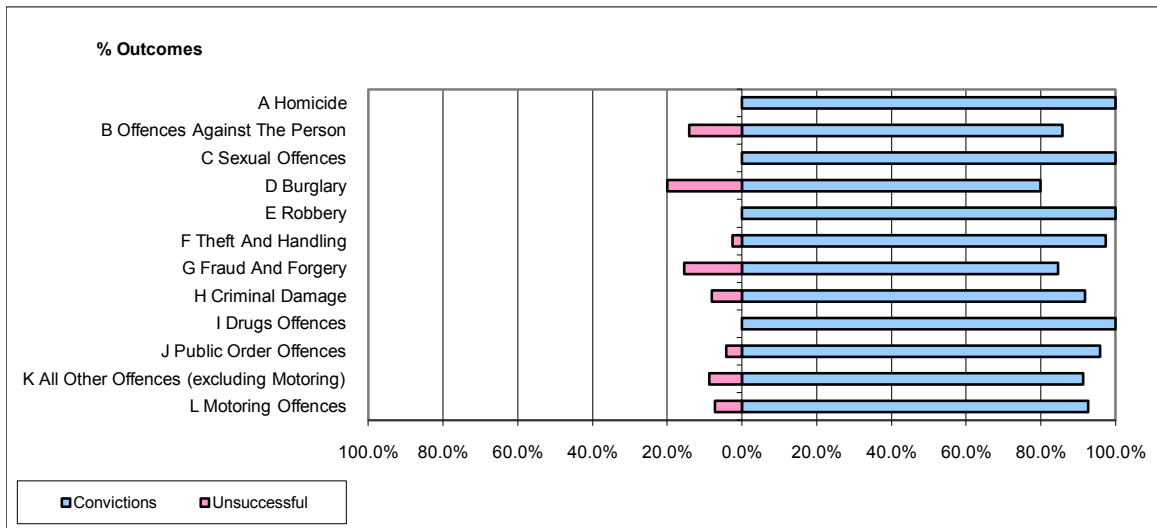


CPS OUTCOMES BY PRINCIPAL OFFENCE CATEGORY

November 2009

P35-Suffolk



	Convictions		Unsuccessful	
	Number of Defendants	%	Number of Defendants	%
A Homicide	1	100.0%	0	0.0%
B Offences Against The Person	103	85.8%	17	14.2%
C Sexual Offences	9	100.0%	0	0.0%
D Burglary	12	80.0%	3	20.0%
E Robbery	7	100.0%	0	0.0%
F Theft And Handling	114	97.4%	3	2.6%
G Fraud And Forgery	11	84.6%	2	15.4%
H Criminal Damage	34	91.9%	3	8.1%
I Drugs Offences	40	100.0%	0	0.0%
J Public Order Offences	93	95.9%	4	4.1%
K All Other Offences (excluding Motoring)	21	91.3%	2	8.7%
L Motoring Offences	435	92.8%	34	7.2%
Admin Finalisations	0	0.0%	8	100.0%
TOTAL	880	92.1%	76	7.9%