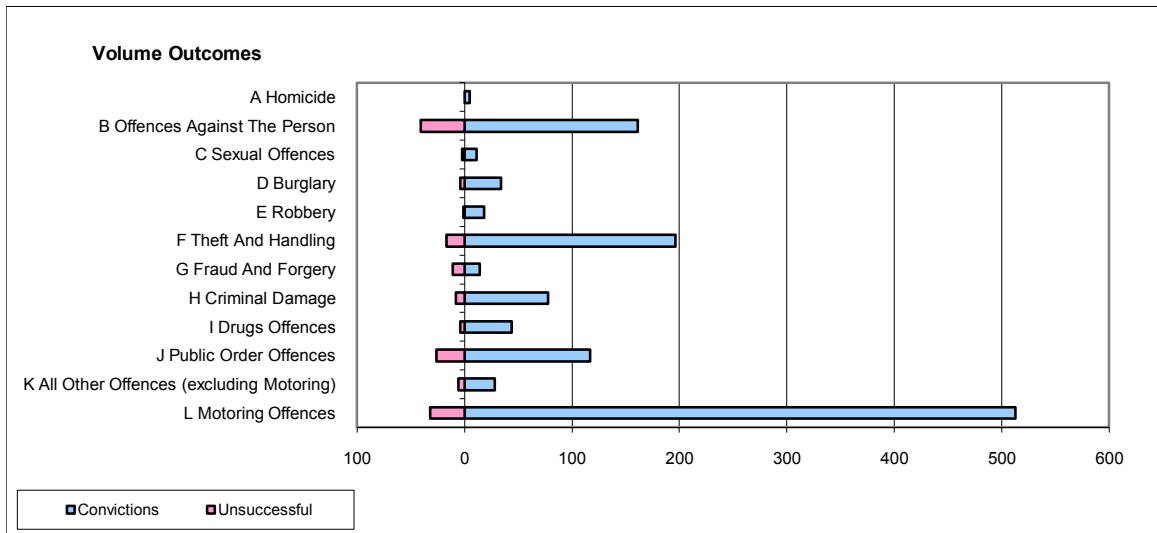
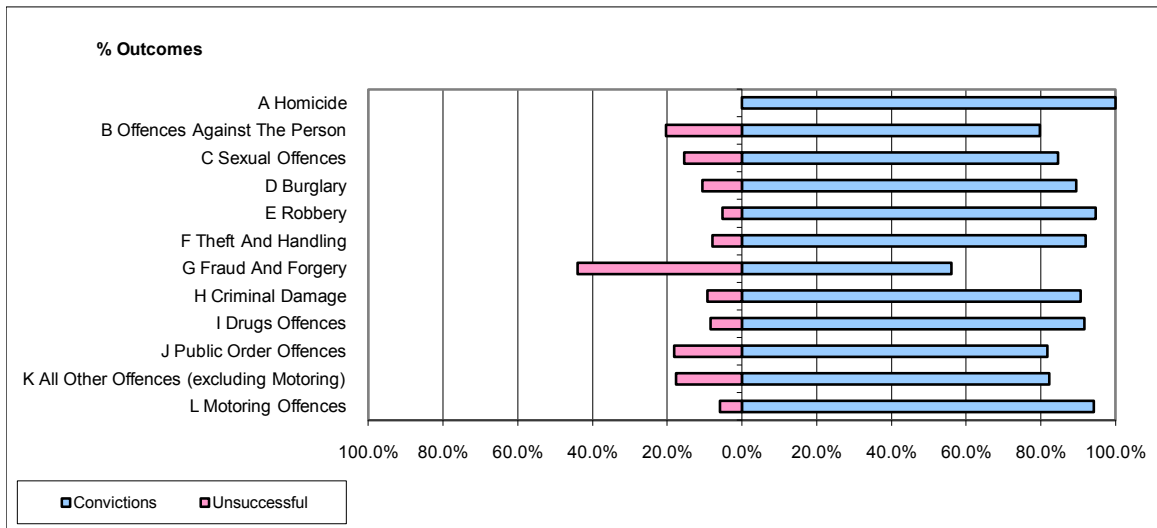


**CPS OUTCOMES BY PRINCIPAL OFFENCE CATEGORY**

**November 2009**

**P34-Staffordshire**



	Convictions		Unsuccessful	
	Number of Defendants	%	Number of Defendants	%
<b>A Homicide</b>	5	100.0%	0	0.0%
<b>B Offences Against The Person</b>	161	79.7%	41	20.3%
<b>C Sexual Offences</b>	11	84.6%	2	15.4%
<b>D Burglary</b>	34	89.5%	4	10.5%
<b>E Robbery</b>	18	94.7%	1	5.3%
<b>F Theft And Handling</b>	196	92.0%	17	8.0%
<b>G Fraud And Forgery</b>	14	56.0%	11	44.0%
<b>H Criminal Damage</b>	78	90.7%	8	9.3%
<b>I Drugs Offences</b>	44	91.7%	4	8.3%
<b>J Public Order Offences</b>	117	81.8%	26	18.2%
<b>K All Other Offences (excluding Motoring)</b>	28	82.4%	6	17.6%
<b>L Motoring Offences</b>	513	94.1%	32	5.9%
<b>Admin Finalisations</b>	0	0.0%	5	100.0%
<b>TOTAL</b>	<b>1,219</b>	<b>88.6%</b>	<b>157</b>	<b>11.4%</b>