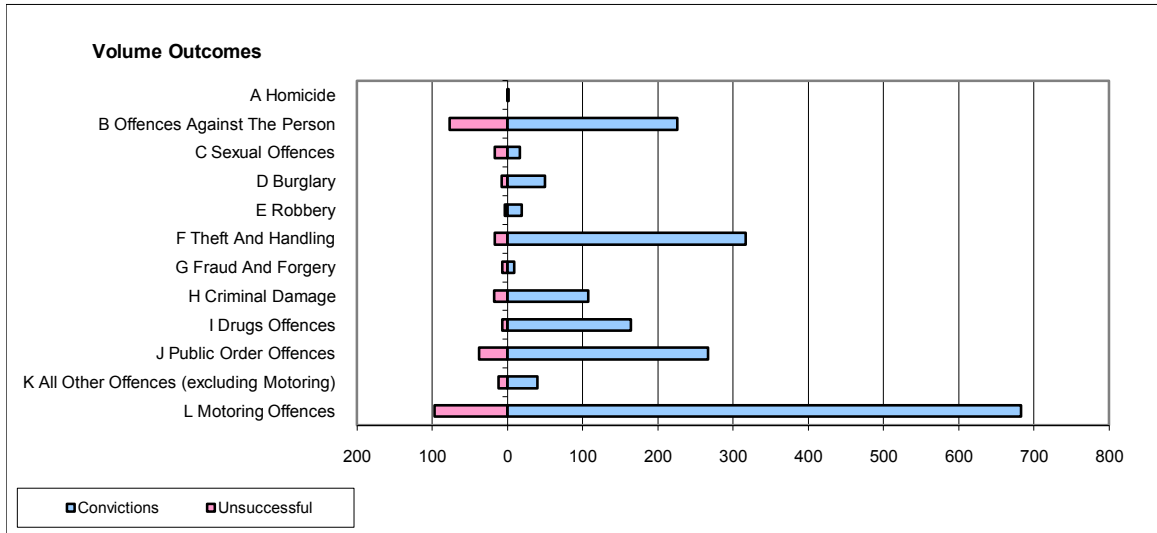
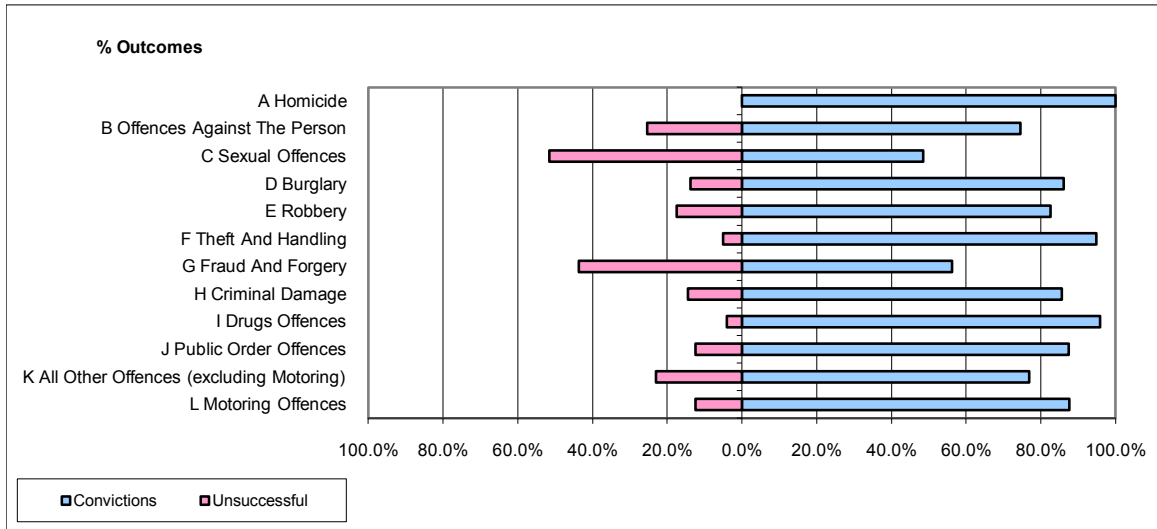


**CPS OUTCOMES BY PRINCIPAL OFFENCE CATEGORY**

**November 2009**

**P32-SouthWales**



	Convictions		Unsuccessful	
	Number of Defendants	%	Number of Defendants	%
<b>A Homicide</b>	1	100.0%	0	0.0%
<b>B Offences Against The Person</b>	226	74.6%	77	25.4%
<b>C Sexual Offences</b>	16	48.5%	17	51.5%
<b>D Burglary</b>	50	86.2%	8	13.8%
<b>E Robbery</b>	19	82.6%	4	17.4%
<b>F Theft And Handling</b>	317	94.9%	17	5.1%
<b>G Fraud And Forgery</b>	9	56.3%	7	43.8%
<b>H Criminal Damage</b>	107	85.6%	18	14.4%
<b>I Drugs Offences</b>	164	95.9%	7	4.1%
<b>J Public Order Offences</b>	267	87.5%	38	12.5%
<b>K All Other Offences (excluding Motoring)</b>	40	76.9%	12	23.1%
<b>L Motoring Offences</b>	683	87.6%	97	12.4%
<b>Admin Finalisations</b>	0	0.0%	20	100.0%
<b>TOTAL</b>	<b>1,899</b>	<b>85.5%</b>	<b>322</b>	<b>14.5%</b>