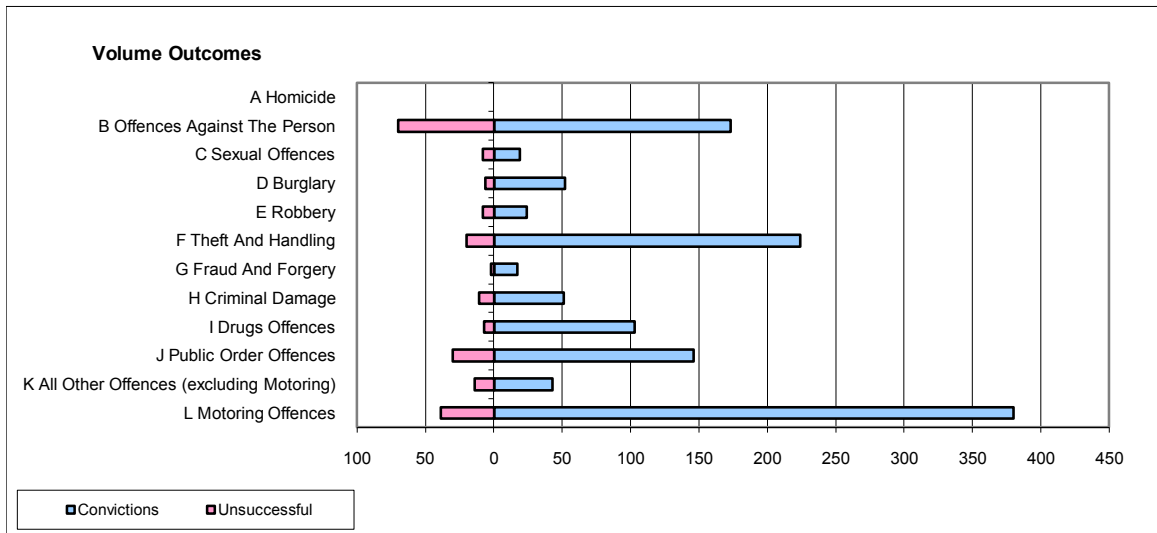
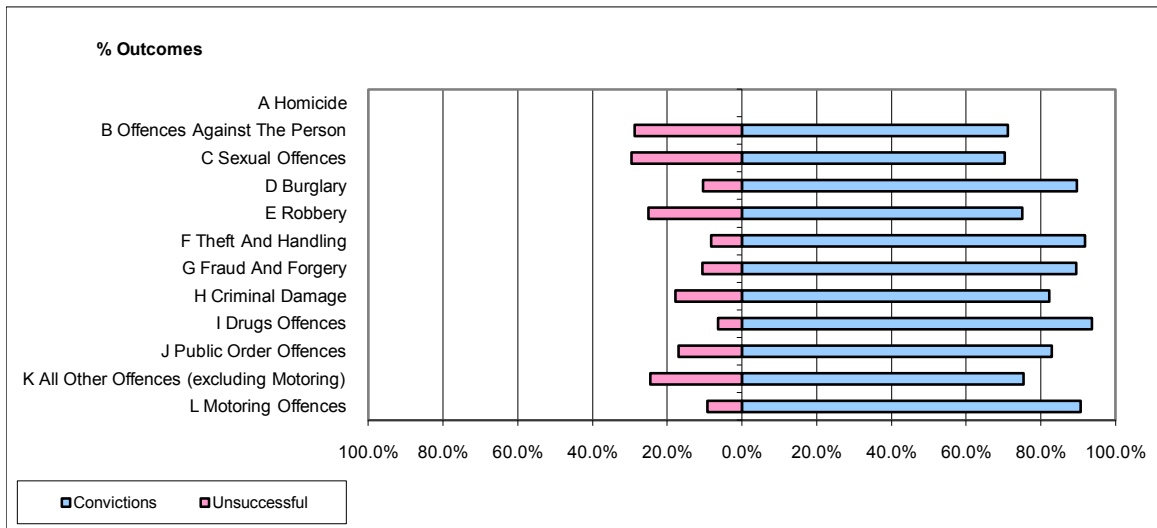


CPS OUTCOMES BY PRINCIPAL OFFENCE CATEGORY

November 2009

P31-Nottinghamshire



	Convictions		Unsuccessful	
	Number of Defendants	%	Number of Defendants	%
A Homicide	0	0	0	0
B Offences Against The Person	173	71.2%	70	28.8%
C Sexual Offences	19	70.4%	8	29.6%
D Burglary	52	89.7%	6	10.3%
E Robbery	24	75.0%	8	25.0%
F Theft And Handling	224	91.8%	20	8.2%
G Fraud And Forgery	17	89.5%	2	10.5%
H Criminal Damage	51	82.3%	11	17.7%
I Drugs Offences	103	93.6%	7	6.4%
J Public Order Offences	146	83.0%	30	17.0%
K All Other Offences (excluding Motoring)	43	75.4%	14	24.6%
L Motoring Offences	380	90.7%	39	9.3%
Admin Finalisations	0	0.0%	10	100.0%
TOTAL	1,232	84.6%	225	15.4%