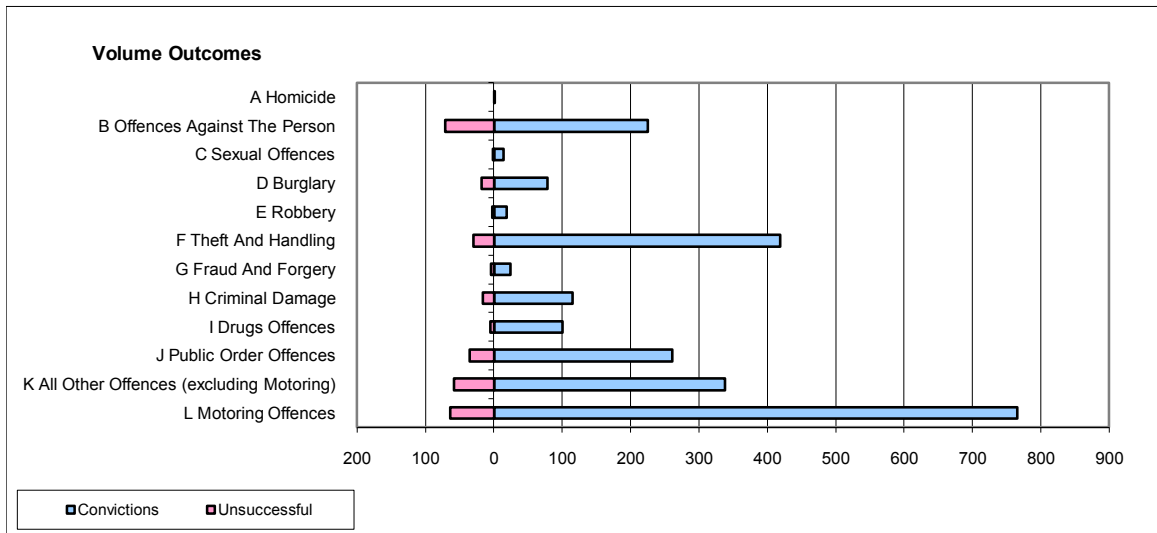
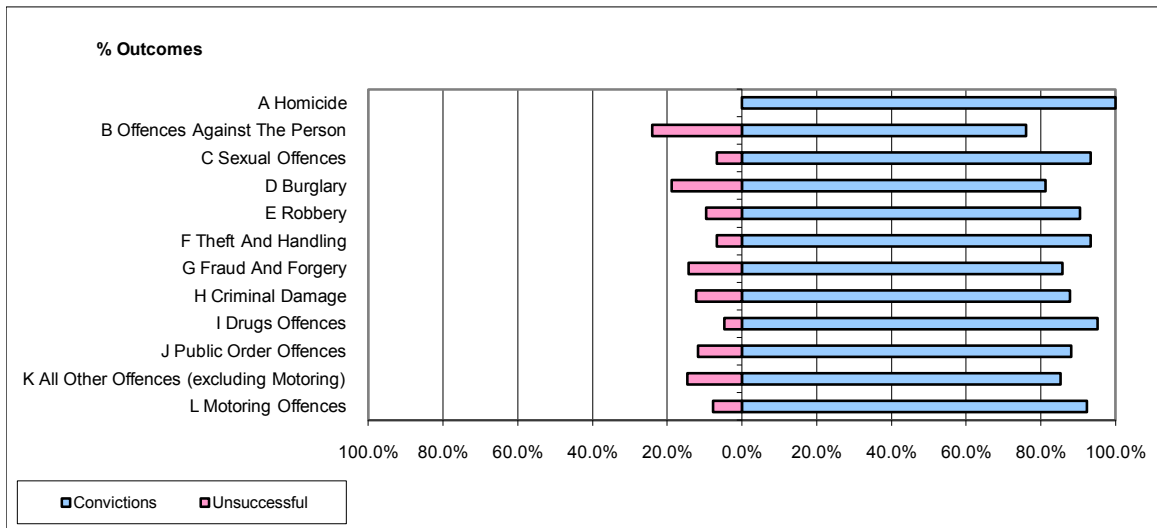


**CPS OUTCOMES BY PRINCIPAL OFFENCE CATEGORY**

**November 2009**

**P28-Northumbria**



	Convictions		Unsuccessful	
	Number of Defendants	%	Number of Defendants	%
<b>A Homicide</b>	1	100.0%	0	0.0%
<b>B Offences Against The Person</b>	225	76.0%	71	24.0%
<b>C Sexual Offences</b>	14	93.3%	1	6.7%
<b>D Burglary</b>	78	81.3%	18	18.8%
<b>E Robbery</b>	19	90.5%	2	9.5%
<b>F Theft And Handling</b>	419	93.3%	30	6.7%
<b>G Fraud And Forgery</b>	24	85.7%	4	14.3%
<b>H Criminal Damage</b>	115	87.8%	16	12.2%
<b>I Drugs Offences</b>	100	95.2%	5	4.8%
<b>J Public Order Offences</b>	261	88.2%	35	11.8%
<b>K All Other Offences (excluding Motoring)</b>	338	85.4%	58	14.6%
<b>L Motoring Offences</b>	766	92.3%	64	7.7%
<b>Admin Finalisations</b>	0	0.0%	9	100.0%
<b>TOTAL</b>	<b>2,360</b>	<b>88.3%</b>	<b>313</b>	<b>11.7%</b>