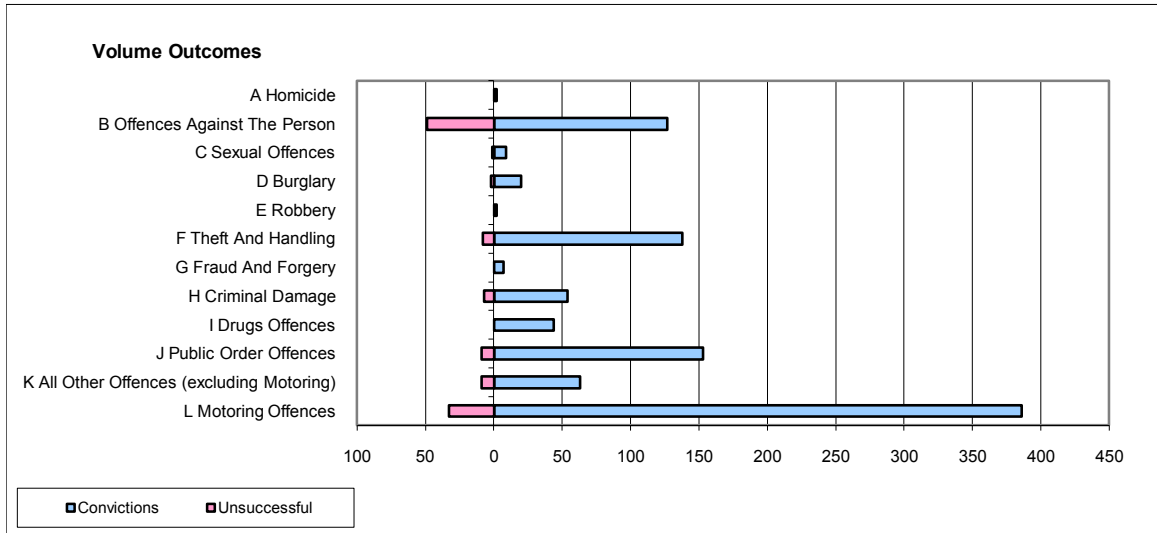
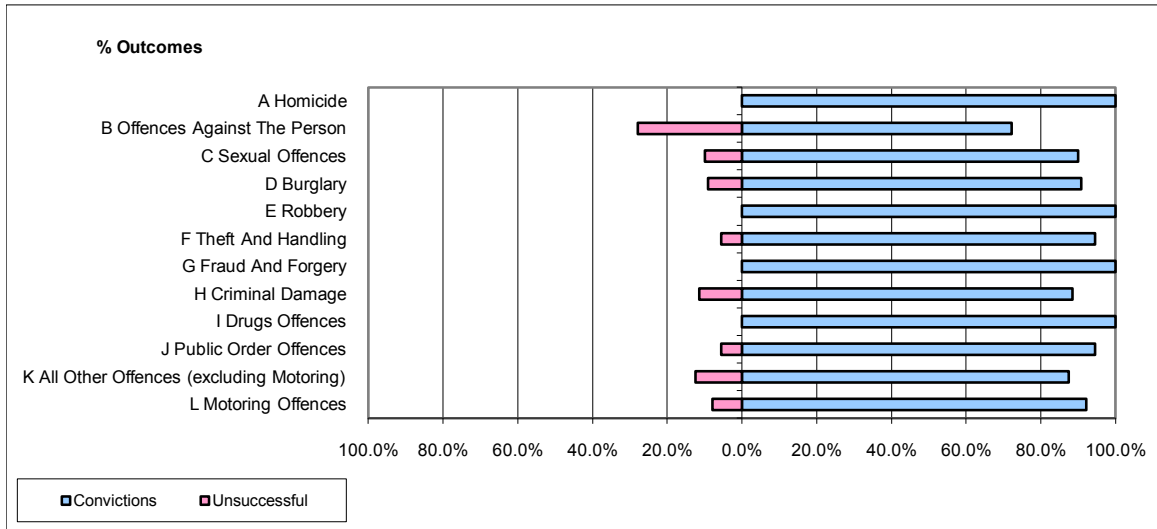


CPS OUTCOMES BY PRINCIPAL OFFENCE CATEGORY

November 2009

P29-NorthWales



	Convictions		Unsuccessful	
	Number of Defendants	%	Number of Defendants	%
A Homicide	2	100.0%	0	0.0%
B Offences Against The Person	127	72.2%	49	27.8%
C Sexual Offences	9	90.0%	1	10.0%
D Burglary	20	90.9%	2	9.1%
E Robbery	2	100.0%	0	0.0%
F Theft And Handling	138	94.5%	8	5.5%
G Fraud And Forgery	7	100.0%	0	0.0%
H Criminal Damage	54	88.5%	7	11.5%
I Drugs Offences	44	100.0%	0	0.0%
J Public Order Offences	153	94.4%	9	5.6%
K All Other Offences (excluding Motoring)	63	87.5%	9	12.5%
L Motoring Offences	386	92.1%	33	7.9%
Admin Finalisations	0	0.0%	5	100.0%
TOTAL	1,005	89.1%	123	10.9%