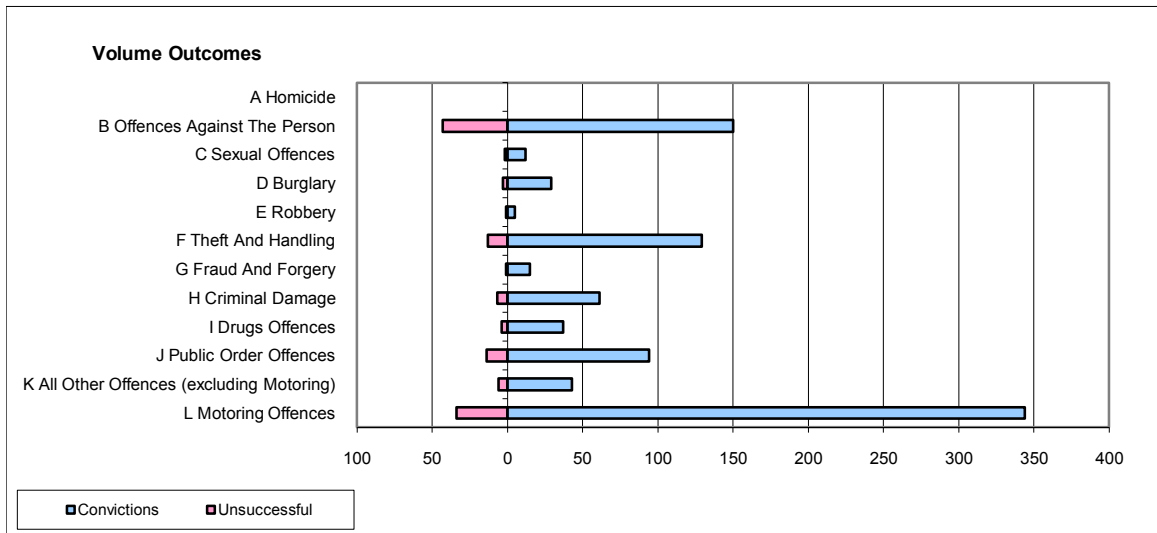
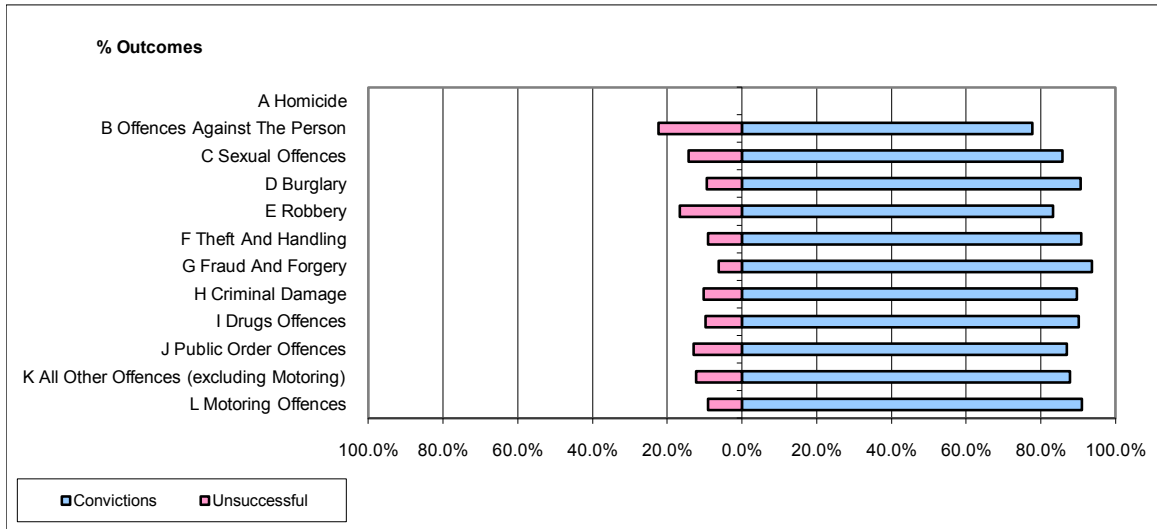


CPS OUTCOMES BY PRINCIPAL OFFENCE CATEGORY

November 2009

P26-Norfolk



	Convictions		Unsuccessful	
	Number of Defendants	%	Number of Defendants	%
A Homicide	0	0	0	0
B Offences Against The Person	150	77.7%	43	22.3%
C Sexual Offences	12	85.7%	2	14.3%
D Burglary	29	90.6%	3	9.4%
E Robbery	5	83.3%	1	16.7%
F Theft And Handling	129	90.8%	13	9.2%
G Fraud And Forgery	15	93.8%	1	6.3%
H Criminal Damage	61	89.7%	7	10.3%
I Drugs Offences	37	90.2%	4	9.8%
J Public Order Offences	94	87.0%	14	13.0%
K All Other Offences (excluding Motoring)	43	87.8%	6	12.2%
L Motoring Offences	344	91.0%	34	9.0%
Admin Finalisations	0	0.0%	6	100.0%
TOTAL	919	87.3%	134	12.7%