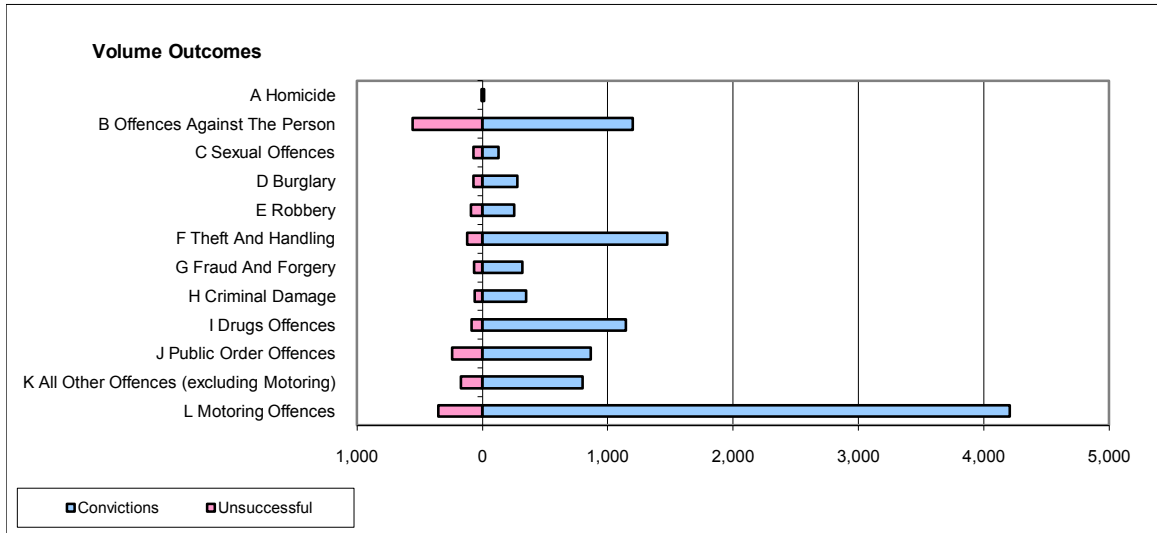
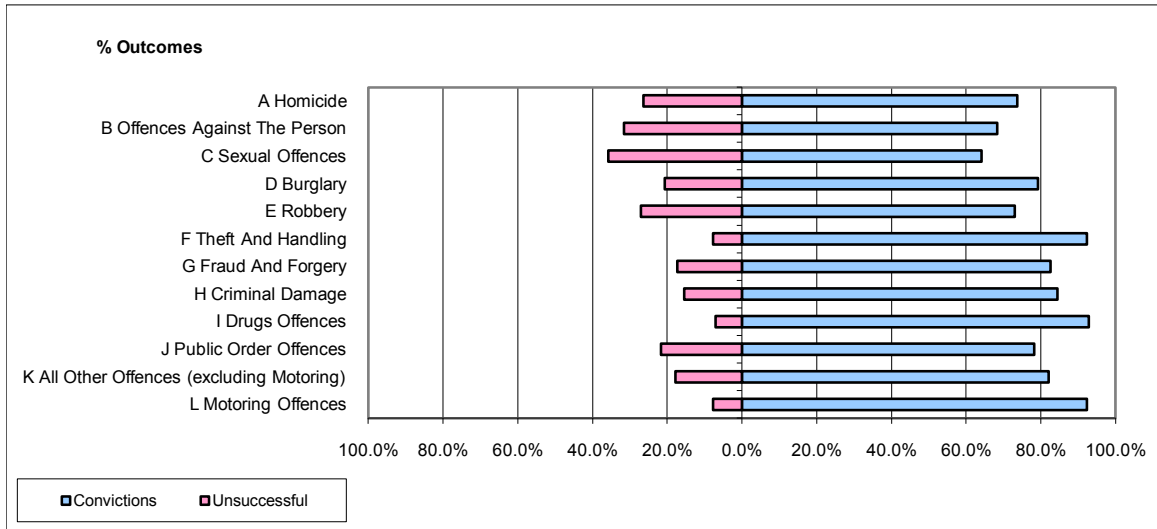


CPS OUTCOMES BY PRINCIPAL OFFENCE CATEGORY

November 2009

P25-Metropolitan&City



	Convictions		Unsuccessful	
	Number of Defendants	%	Number of Defendants	%
A Homicide	14	73.7%	5	26.3%
B Offences Against The Person	1,199	68.4%	555	31.6%
C Sexual Offences	129	64.2%	72	35.8%
D Burglary	279	79.3%	73	20.7%
E Robbery	254	73.0%	94	27.0%
F Theft And Handling	1,474	92.3%	123	7.7%
G Fraud And Forgery	319	82.6%	67	17.4%
H Criminal Damage	348	84.5%	64	15.5%
I Drugs Offences	1,142	92.9%	87	7.1%
J Public Order Offences	866	78.3%	240	21.7%
K All Other Offences (excluding Motoring)	797	82.2%	173	17.8%
L Motoring Offences	4,206	92.3%	350	7.7%
Admin Finalisations	0	0.0%	219	100.0%
TOTAL	11,027	83.9%	2,122	16.1%