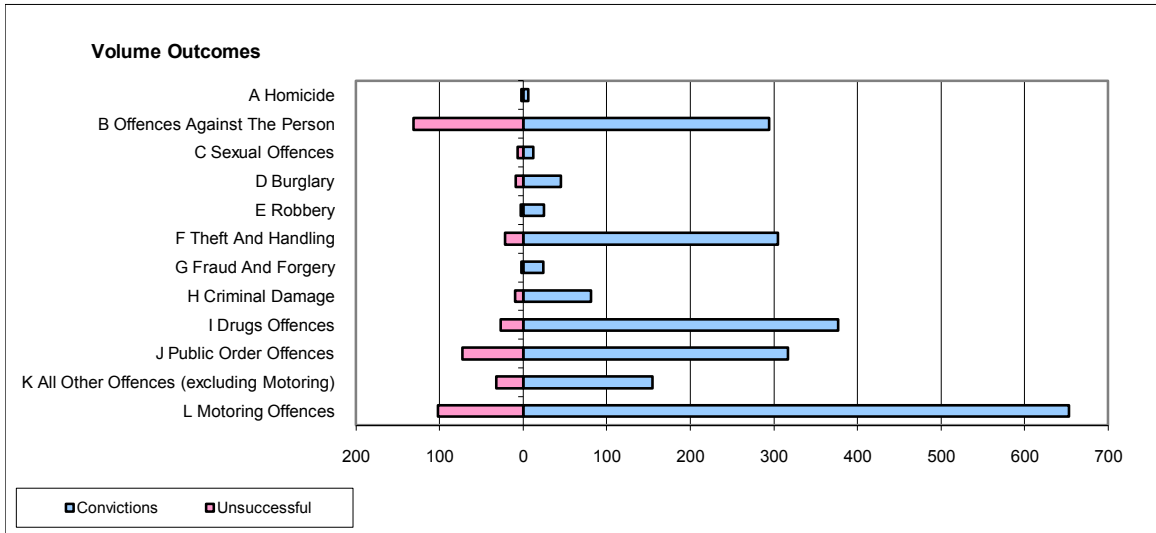
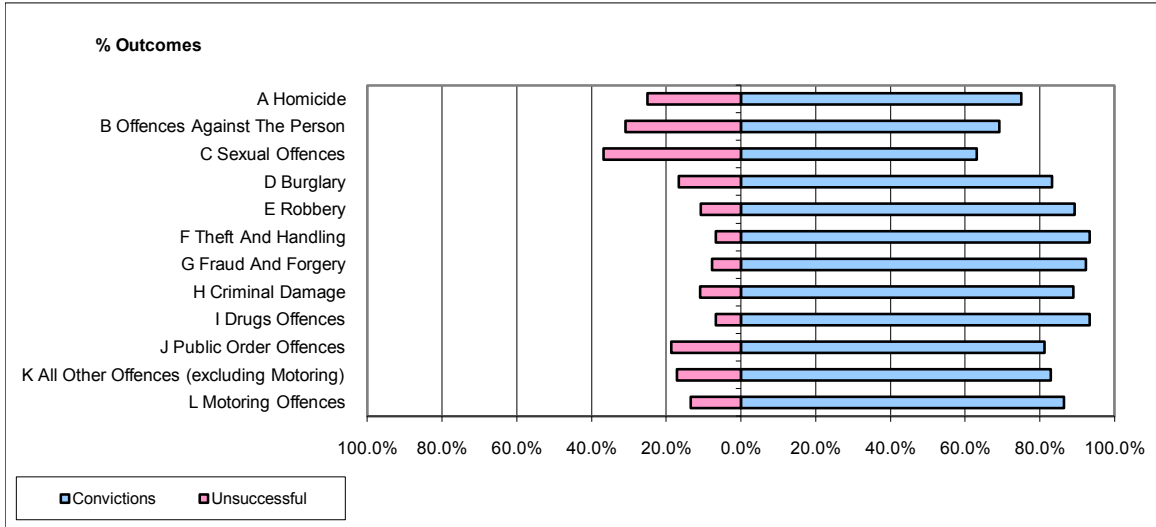


CPS OUTCOMES BY PRINCIPAL OFFENCE CATEGORY

November 2009

P24-Merseyside



	Convictions		Unsuccessful	
	Number of Defendants	%	Number of Defendants	%
A Homicide	6	75.0%	2	25.0%
B Offences Against The Person	294	69.2%	131	30.8%
C Sexual Offences	12	63.2%	7	36.8%
D Burglary	45	83.3%	9	16.7%
E Robbery	25	89.3%	3	10.7%
F Theft And Handling	305	93.3%	22	6.7%
G Fraud And Forgery	24	92.3%	2	7.7%
H Criminal Damage	81	89.0%	10	11.0%
I Drugs Offences	377	93.3%	27	6.7%
J Public Order Offences	317	81.3%	73	18.7%
K All Other Offences (excluding Motoring)	155	82.9%	32	17.1%
L Motoring Offences	653	86.5%	102	13.5%
Admin Finalisations	0	0.0%	19	100.0%
TOTAL	2,294	83.9%	439	16.1%