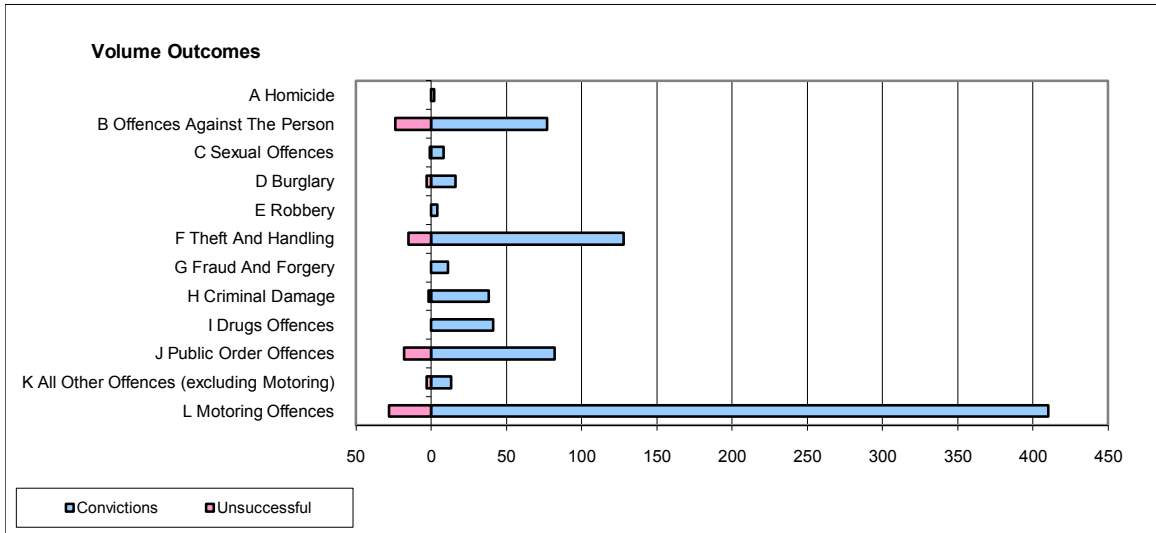
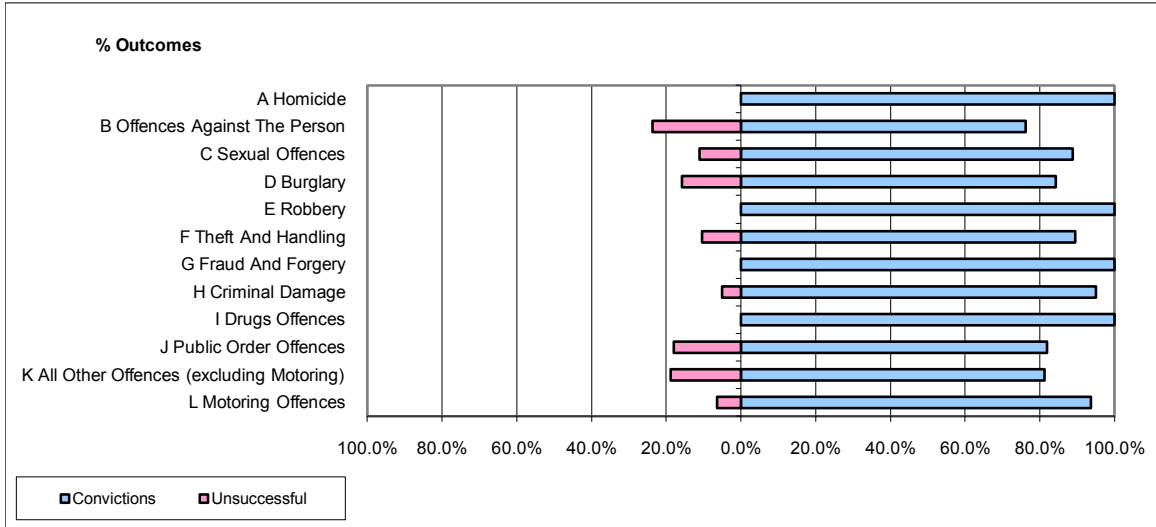


CPS OUTCOMES BY PRINCIPAL OFFENCE CATEGORY

November 2009

P23-Lincolnshire



	Convictions		Unsuccessful	
	Number of Defendants	%	Number of Defendants	%
A Homicide	2	100.0%	0	0.0%
B Offences Against The Person	77	76.2%	24	23.8%
C Sexual Offences	8	88.9%	1	11.1%
D Burglary	16	84.2%	3	15.8%
E Robbery	4	100.0%	0	0.0%
F Theft And Handling	128	89.5%	15	10.5%
G Fraud And Forgery	11	100.0%	0	0.0%
H Criminal Damage	38	95.0%	2	5.0%
I Drugs Offences	41	100.0%	0	0.0%
J Public Order Offences	82	82.0%	18	18.0%
K All Other Offences (excluding Motoring)	13	81.3%	3	18.8%
L Motoring Offences	410	93.6%	28	6.4%
Admin Finalisations	0	0.0%	22	100.0%
TOTAL	830	87.7%	116	12.3%